



Scan the QR code for more information on the ways our donors are changing and saving lives—and how you can make an impact on our community

or call our Development Department at **973-926-7951**

201 Lyons Avenue at Osborne Terrace  
Newark, NJ 07112  
**973-926-7000**

[rwjbh.org/newarkbeth](http://rwjbh.org/newarkbeth)

**RWJBarnabas**  
HEALTH

Newark Beth Israel  
Medical Center



**World-Class Care,  
Close to Home**

**RWJBarnabas**  
HEALTH

Newark Beth Israel  
Medical Center

# Newark Beth Israel Medical Center

Newark Beth Israel Medical Center, an RWJBarnabas Health hospital, is a 665-bed regional care Top Teaching hospital and home to RWJBarnabas Health’s Heart Failure and Transplant Program, one of the nation’s top 20 heart transplant centers, which has performed more than 1,100 heart transplants; New Jersey’s only Advanced Lung Disease and Transplant Program and a Valve Center that performs complex cardiac valve procedures, including minimally invasive transcatheter aortic valve replacements (TAVRs). RWJBarnabas Health, The Frederick B. Cohen, MD, Comprehensive Cancer and Blood Disorders Center at Newark Beth Israel Medical Center and the Healthcare Foundation of New Jersey Breast Health Center, in partnership with Rutgers Cancer Institute—the state’s only NCI-designated Comprehensive Cancer Center—bring a world class team of researchers and specialists and provide close-to-home access to the latest treatments and clinical trials.

**Children’s Hospital of New Jersey** at Newark Beth Israel Medical Center cares for children from birth through adolescence, with more than 30 specialized pediatric services including New Jersey’s largest Valerie Fund Children’s Center for Cancer and Blood Disorders and the Children’s Heart Center, which offers the state’s largest and most comprehensive range of medical and surgical treatments for the most complex cardiac abnormalities. Children’s Hospital of New Jersey is also home to a Neonatal Intensive Care Unit (NICU) that delivers the highest level of care to infants from across the region.



## Vital Statistics\*

-  **665** Beds
-  **3,483** Employees
-  **900** Medical Staff
-  **6** Medical Residencies  
**11** Fellowships
-  **2,900** Births
-  **21,275** Admissions
-  **97,246** ED Visits
-  **209,848** Outpatient Visits
-  **10,034** Surgeries
-  **22** Heart Transplants  
**31** VAD Implants
-  **16** Lung Transplants

\*2024

# Caring for our Community



## Delivering Fresh Produce in a Food Desert

**The Beth Greenhouse** grows over 5,000 lbs of fresh produce a year and serves as an educational hub for residents, offering year-round field trips and wellness activities.



## Prescribing Food as Medicine

In 2024, the **Women’s Wellness Food Farmacy** distributed over 90,000 lbs of nutritious food and 140,000 diapers to families in need.



## Building Healthy Habits Early

**Hannah’s Kitchen** empowers children aged 2-12 to prepare healthy meals. Newark Beth Israel’s team of Registered Dietitians foster healthy eating habits by leading interactive cooking classes.



## Providing Care Close to Home



Every year thousands of Newark residents receive life-saving health screenings, clinical care, and health information at Newark Beth Israel Medical Center’s signature community health events: **The Alma Beatty Health and Wellness Fair, Ray Murphy Men’s Health Night, and Women’s Health Day.**



# Building a Healthier Newark

Newark Beth Israel Medical Center, an RWJBarnabas Health hospital, is an anchor institution committed to the health and wellness of the communities that it serves. The Newark Strong expansion project is a **\$200 million** investment that reflects the hospital's dedication to delivering state-of-the-art patient care, community partnerships, and economic development.

In 2023 the hospital unveiled the most visible element of the expansion, the Newark Strong Lobby, a **17,500 square-foot** glass-enclosed lobby designed to create a space filled with light and transparency. The project also includes a new state-of-the art geriatric unit, a new redesigned critical care unit, expanded adult and pediatric emergency departments, a new cardiac catheterization lab, and new operating rooms and treatment areas that elevate the hospital experience for our patients and their loved ones.



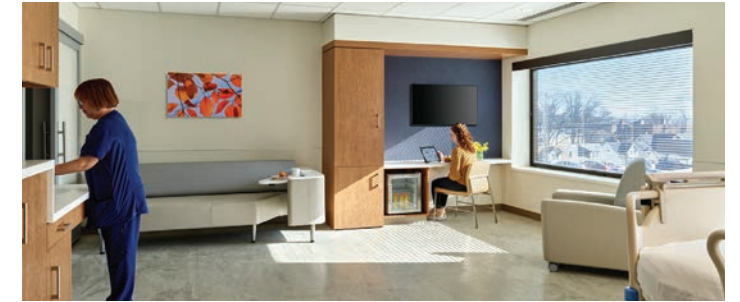
## Expanded Emergency Room Care

The newly redesigned Healthcare Foundation of New Jersey Emergency Services Pavilion includes **new private exam rooms**, a new fast-track suite, a new waiting area for adults, and a new waiting area and dedicated entrance for families visiting the pediatric emergency department.



## Expanded Cardiac Care

A new hybrid operating room, a new cardiac catheterization lab, and upgraded equipment allow Newark Beth Israel to remain among the **nation's top 20 heart transplant programs** and one of the leading cardiology programs in the region.



## State-of-the-Art Critical Care

Private rooms designed to support **cutting-edge critical care** and enable loved ones to share in the healing process.



## Modern Geriatrics

A **24-bed geriatric unit** offering all private rooms designed to meet the needs of older adults, including rooms large enough to accommodate physical therapy, cushioned slip resistant flooring, hallways with color blocking patterns, and more.



# Giving Matters

Our donors enable Newark Beth Israel Medical Center to deliver compassionate, world-class care to all those in need, both here in our hometown and across the region. Their generosity makes possible the essential, life-changing – and life-saving – programs and services that we provide to our community, day in and day out.

Every gift matters, because every gift makes an **IMPACT** on the lives of our patients and their families – and on the health and happiness of our entire community.

**With your generous support, Newark Beth Israel will continue to:**

**Invest** in leading-edge research and advanced technologies that enable us to redefine the boundaries of what is possible in medicine.

**Modernize** and expand our facilities that help us deliver the most advanced treatment options and best-in-class services.

**Provide** the highest quality of comprehensive, individualized care to each and every one of our patients, regardless of their background or means.

**Augment** the resources and support services that give our patients and their families the clarity, comfort, and confidence they deserve – at the time of diagnosis, during treatment, and beyond.

**Coordinate** and advance community-focused programs and activities that address the social determinants of health and promote wellness among our friends and neighbors.

**Train** future generations of physicians, nurses, and other clinicians who aspire to make great care even better.

**Total Giving  
Since 2019**

**\$23.75M**

**Let's transform  
healthcare,  
together.**

**Thank you for  
your support.**

