

Positions for 6-Person High-Performance Teams*

Resuscitation Triangle Roles



Compressor

- Assesses the patient
- Performs compressions according to local protocols
- Rotates every 2 minutes or earlier if fatigued



Monitor/Defibrillator/ CPR Coach

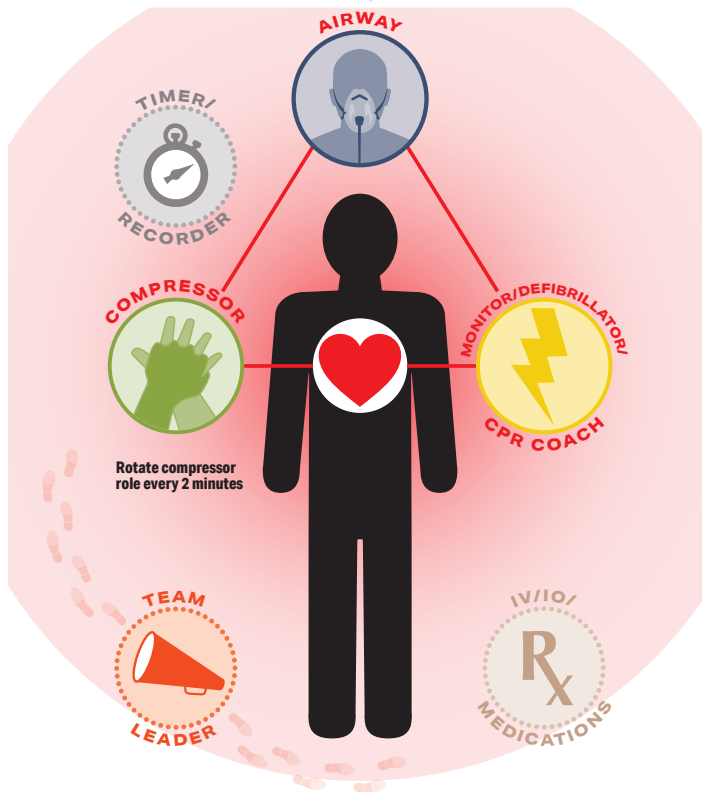
- Brings and operates the AED/monitor/defibrillator and acts as the CPR Coach if designated
- If a monitor is present, places it in position where it can be seen by the Team Leader (and most of the team)



Airway

- Opens the airway
- Provides bag-mask ventilation
- Inserts airway adjuncts as appropriate†

The team owns the code. No team member leaves the triangle except to rotate compressors or to protect his or her safety.



Leadership Roles



Team Leader

- **Every resuscitation team must have a defined leader**
- Assigns roles to team members
- Makes treatment decisions†
- Provides feedback to the rest of the team as needed
- Assumes responsibility for roles not defined



IV/IO/Medications†

- An ALS professional role
- Initiates IV/IO access
- Administer medications



Timer/Recorder

- Records the time of interventions and medications (and announces when these are next due)
- Records the frequency and duration of interruptions in compressions
- Communicates these to the Team Leader (and the rest of the team)

*This is a suggested team formation. Roles may be adapted to local protocol.

†Roles and tasks are performed by advanced providers.

© 2025 American Heart Association