

2022 ANNUAL REPORT



Steeplechase Cancer Center Advancing Care Through Quality and Collaboration

Robert Wood Johnson | RWJ Barnabas
University Hospital HEALTH
Somerset
Steeplechase Cancer Center

RUTGERS
Cancer Institute
of New Jersey
RUTGERS HEALTH

Let's beat cancer together.

LEADERSHIP MESSAGE



Kathleen C. Toomey, MD
Medical Director
Steeplechase Cancer Center
Robert Wood Johnson University
Hospital Somerset



**Kerstin Scheper, DNP, RN, RN-BC,
OCN, CHPN**
Interim Assistant Vice President,
Oncology Services
Steeplechase Cancer Center
Robert Wood Johnson University
Hospital Somerset

Advancing Care Through Quality and Collaboration

As we emerge from the lingering hardships of the COVID-19 pandemic, the Steeplechase Cancer Center at Robert Wood Johnson University Hospital (RWJUH) Somerset, in partnership with Rutgers Cancer Institute of New Jersey, has placed an even stronger focus on quality and collaboration, along with greater convenience, more in-person support opportunities and, of course, compassionate, personalized cancer care.

Thanks to a unique collaboration between Drs. Deborah Lue and Colin Failey at the Steeplechase Cancer Center, patients requiring breast cancer surgery can now opt for a groundbreaking procedure that ensures the chest wall nerve is preserved and stays connected to the body's blood supply. This nipple-sparing mastectomy not only preserves sensation, but it also is designed to reduce pain and enhance quality of life. In addition, we've expanded access to specialized surgical interventions for patients with colorectal cancers by welcoming Dr. Brendan Scully to our team – with additional specialists coming soon.

Throughout 2022, our interdisciplinary team worked together to lay the groundwork for a new outpatient office suite that will double the number of medical oncology exam rooms, increase infusion capacity, streamline workflow and expand treatment hours. Set to open in early 2023, this state-of-the-art facility will ensure an optimal patient experience and healing environment with attention to privacy and comfort — from heated reclining chairs to soothing artwork.

Collaboration was also integral to broadened cancer awareness and prevention efforts. Steeplechase Cancer Center team members partnered with RWJUH Somerset's Community Health Department, additional hospital staff, members of the hospital's employee Business Resource Groups (BRGs), physician practices and community organizations to promote the importance of screenings

and early detection, focusing in particular on those affected by health disparities. Our efforts included a grant-funded campaign that increased human papillomavirus (HPV) vaccination rates by an incredible 200%, helping to protect young people from cervical cancer and other types of cancer.

With facilitation through Somerset Health Care Foundation, our community continues to uplift our team and our patients in countless ways, and we extend our heartfelt gratitude for this generous support. It was wonderful to see community members connecting with patients and families in person again during 2022.

Looking ahead, we're excited to continue to broaden treatment and support options for our patients. Beyond opening our new outpatient office suite, we plan to launch cardio-oncology programs and a breast cancer survivorship clinic, expand clinical trial access and add technology, including the latest TrueBeam linear accelerator to integrate imaging and radiation delivery for patients receiving radiation therapy treatments.

We're expanding to meet the needs of our growing community, so there's no need to travel for exceptional cancer care. Our diverse group of passionate, dedicated staff works tirelessly to support the physical, emotional and mental health needs of our amazing patients and their families — and it's all right here, close to home.

COMMENDABLE QUALITY MEASURES

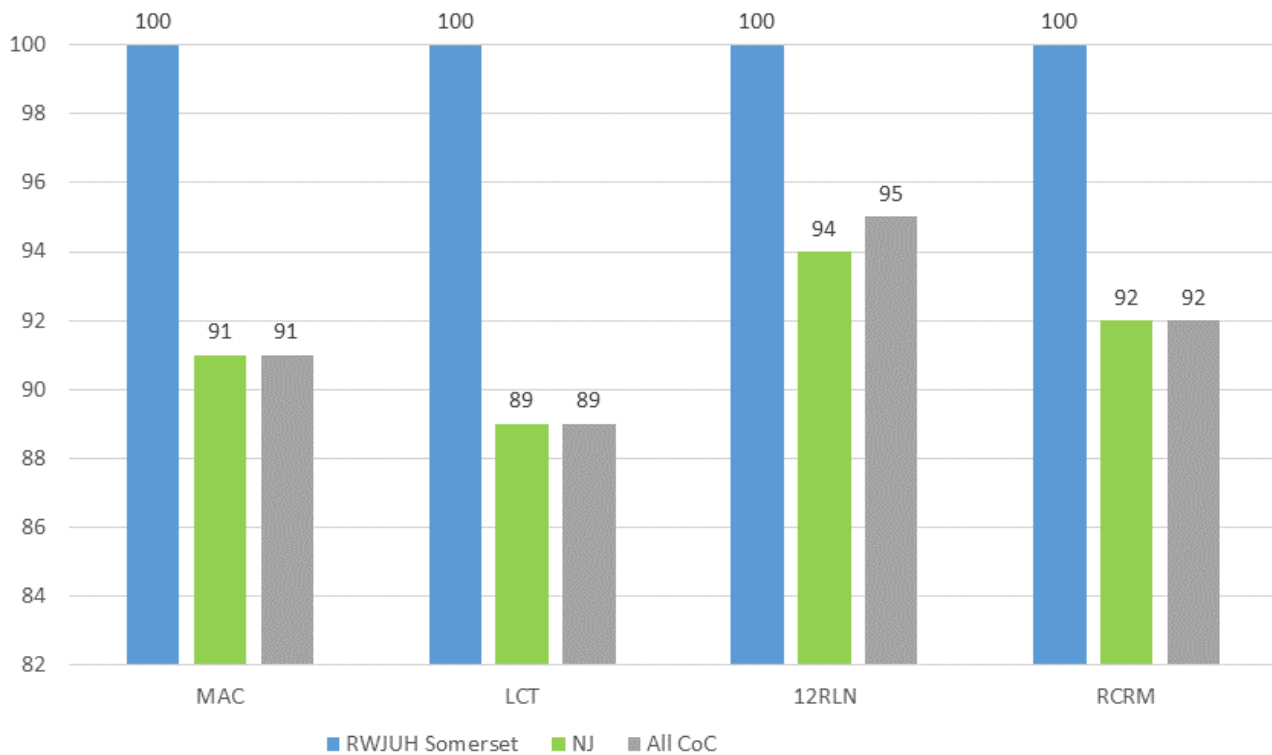
Quality Measures

As one of approximately 1,500 cancer programs accredited by the Commission on Cancer (CoC) of the American College of Surgeons, the Steeplechase Cancer Center is dedicated to continuously improving outcomes for patients with cancer and is required to submit data that compares quality-related performance measures with aggregated CoC-accredited programs, including accountability, quality improvement and surveillance measures.

The CoC's National Cancer Database uses the Rapid Cancer Reporting System (RCRS) for the submission of data from CoC-accredited hospital registries. RCRS reporting tools make CoC-accredited programs better at focusing performance improvement efforts in ways that benefit patients.

Compared to other cancer programs in New Jersey and across the U.S., the Steeplechase Cancer Center not only exceeded performance standards for the following RCRS measures, but also achieved 100% compliance in 2022. This recent data is shown below.

2022 RCRS Measures



Explanation of measures:

MAC: Combination chemotherapy or chemo-immunotherapy (if HER2 positive) is recommended or administered within 4 months (120 days) of diagnosis for women under 70 with AJCC T1cN0M0, or stage IB - III hormone receptor negative breast cancer.

LCT: Systemic chemotherapy is administered within 4 months to day preoperatively or day of surgery to 6 months postoperatively, or it is recommended for surgically resected cases with pathologic, lymph node-positive (pN1) and (pN2) non-small cell lung cancer (NSCLC).

12RLN: At least 12 regional lymph nodes are removed and pathologically examined for resected colon cancer.

RCRM: Circumferential margin is greater than 1 mm from the tumor to the inked, non-serosalized resection margin for rectal resections.

COMMUNITY OUTREACH AND SCREENINGS

Robust Outreach

In 2022, the Community Health Department reached more than **20,000** people through more than **300** programs focused on cancer prevention and awareness.

Collaboration Boosts HPV Vaccines

Vaccines to protect against human papillomavirus (HPV) – the most common sexually transmitted infection – can prevent the development of cervical cancer and other types of cancer. Through a grant from the Regional Chronic Disease Coalition (RCDC) of Somerset and Morris Counties, RWJUH Somerset dramatically expanded HPV awareness and vaccination efforts in 2022, targeting young people ages 9 to 26 and their families.

With the RCDC's support, the Community Health Department, the Steeplechase Cancer Center and RWJUH Somerset physician practices such as Somerset Family Practice collaborated on targeted outreach campaigns through more than 83,000 piece mailings, nearly 5,000 phone calls, chart reviews during patient appointments, nearly 789,000 social media impressions, and 58 educational seminars and webinars. This six-month initiative far exceeded its initial goals, with the HPV vaccination rate increasing by more than 200%. RWJUH Somerset provided more than 1,600 HPV vaccines and extended outreach and education to more than 876,000 individuals.

A Focus on Breast Cancer Awareness

Beyond broader cancer awareness efforts, RWJUH Somerset's Community Health Department, nurses and team members from the hospital's Black Professionals Network helped promote breast cancer awareness and encourage mammogram screenings at various events throughout 2022, particularly among women of color. Team members helped build trust, convey the importance of early detection and provide mammogram scheduling information. Outreach included partnering with the Middlesex Regional Black Nurse Association, holding events at church communities and interacting with attendees at the New Jersey Natural Hair and Beauty Expo in Edison.

RWJUH Somerset also partnered with Bridgewater Commons mall for a month-long "Go Pink at the Commons!"

Breast Cancer Awareness Month initiative with activities and promotions. Events included a celebration featuring music from the NJ Symphony Chamber Players and makeovers for patients with breast cancer. Hospital staff provided educational workshops at the mall and staffed "Tables of Hope" that focused on early detection and screening. In addition, throughout the month, eye-catching breast cancer awareness reminders were displayed throughout the mall, including a 30-foot mural on a storefront and a 16-foot decal in Center Court.



Prostate and Skin Cancer Screenings

Through outreach that included underserved communities, 102 men were screened for prostate cancer at two screening events facilitated by the RWJUH Somerset's Community Health Department, with 20 abnormal PSAs detected and referred for follow up. In addition, nearly 50 people were screened for skin cancer at a late spring screening event.

Campaign Promotes Expanded Lung Cancer Program

With the recent broadening of eligibility criteria for low-dose CT screening – which can detect lung cancer at its earliest stages – Lung Cancer Screening Program manager Kaidlan Ricardo, CMA, BS-HA launched an educational outreach initiative for clinicians, employees and the community. This included 14 meetings with Somerset County primary care and specialty physician practices, including Somerset Family Practice physicians and medical students, to explain the referral process. She also promoted the program through employee awareness tables, community events, health fairs, senior center visits and RWJUH Somerset’s Health Talk show on Piscataway Community TV. The hospital’s Marketing Department conducted an email campaign reaching more than 14,000 Somerset County residents. In 2022, 202 people received lung cancer screenings, with five referred for early-stage lung cancer treatment.



“Through these screenings, we can catch and monitor any abnormal nodules so that early interventions, like minimally invasive surgery, are an option as soon as lung cancer is suspected or confirmed,” says Ricardo. “We’re also placing a greater emphasis on discussing tobacco use and referring people to tobacco cessation programs, reducing their risk for lung cancer.”



Left to right: Deborah Lue, MD, Joetta, Faye Yin, MD

Team USA Olympian Joins Breast Cancer Efforts

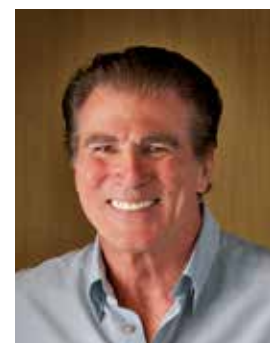
RWJUH Somerset welcomed four-time Olympian and New Jersey Hall of Fame Inductee Joetta as the keynote speaker of its annual Breast Cancer Awareness Month event in October 2022. Nearly 80 people attended the in-person event, which focused on “Olympic Principles to Achieve Victory Over Breast Cancer.”

An author, motivator and leading authority on health and wellness, Joetta shared principles to achieve one’s full potential and described the importance of physical activity in reducing rates of cancer and other chronic diseases. In addition, Deborah Lue, MD, breast surgeon with RWJBarnabas Health Medical Group and medical director of breast cancer services at the Steeplechase Cancer Center, discussed breast cancer risk factors, signs, prevention strategies and treatment advances.

Colorectal Cancer Event Features Former NFL Player

Colorectal cancer survivor Vince Papale, a former member of the Philadelphia Eagles who inspired the movie “Invincible,” headlined a free webinar presented by RWJUH Somerset and Rutgers Cancer Institute of New Jersey in March 2022. The webinar, entitled “Be Invincible! Vince Papale’s Playbook for Defeating Colon Cancer,” was attended by more than 40 people.

Beyond his anecdotes about joining the Eagles as a walk-on and filming the movie, Papale shared an account of his colon cancer diagnosis and his story of treatment and recovery. He was joined by Rutgers Cancer Institute of New Jersey medical oncologist Patrick Boland, MD, who provided an overview of numerous colorectal conditions, symptoms, prevention strategies, diagnostic technologies and advanced treatments.



Vince Papale

Lifesaving Colonoscopy Outreach

With the support of a grant from NJCEED, the Steeplechase Cancer Center and RWJUH Somerset’s Community Health Department coordinated colorectal cancer awareness efforts that facilitated 35 free screenings for uninsured individuals. As a result, two masses were detected and a lifesaving surgery was performed. Collaborative outreach efforts involved Steeplechase Cancer Center nurse navigators discussing the importance of colonoscopies with patients and facilitating physician appointments, and Chinese, Indian and Hispanic medical program coordinators engaging with underserved communities to promote awareness.

NEW PROGRAMS, TECHNOLOGY AND EXPERTISE

Sensation-Preserving, Nipple-Sparing Mastectomy Now Available

Patients at the Steeplechase Cancer Center now have access to a groundbreaking sensation-preserving, nipple-sparing mastectomy procedure designed to significantly improve outcomes, minimize postoperative discomfort and enhance quality of life. Deborah Lue, MD, breast surgeon with RWJBarnabas Health Medical Group and medical director of breast cancer services at the Steeplechase Cancer Center, and board-certified plastic surgeon Colin Failey, MD, are one of just a few teams across the country offering a specialized approach to this unique nipple-sparing mastectomy.



Deborah Lue, MD



Colin Failey, MD

Most mastectomies preserve a patient's natural breast skin, including the nipple and areola skin. Sensation-preserving mastectomies typically graft motor nerves from other parts of the body into the breast, which requires an additional incision. Through their close collaboration, Drs. Lue and Failey have designed their procedure specifically to preserve the natural chest wall sensory nerves that are typically severed during a mastectomy, helping restore nipple sensation as closely as possible to the patient's pre-surgery feeling. In addition to limiting chronic chest wall pain after the procedure, this approach minimizes disruption to breast anatomy and allows for the same recovery time as a traditional mastectomy.

Epic Improves Chemotherapy Ordering

The implementation of the Epic electronic health record across RWJUH Somerset has helped ensure a safe platform for delivering chemotherapy services to patients at the Steeplechase Cancer Center by improving communication and incorporating measures to prevent errors.

Chemotherapy orders are now selected from pre-built treatment plans that are evidence-based and reviewed by providers and pharmacists. Nurses take part in the initial review of chemotherapy orders prior to the patient's arrival. They can validate the entered protocol and selected orders against the National Comprehensive Cancer Network (NCCN) protocol and view a synopsis of treatments to verify when prior medications were administered. The process also builds in a safeguard measure that allows chemotherapy orders to be released only on the day designated for treatment. The new system fosters a culture of patient safety while promoting communication among nurses, pharmacists and physicians.



Broadening Colorectal Cancer Expertise

Brendan F. Scully, MD, a colorectal surgeon with Rutgers Robert Wood Johnson Medical School, has joined the Steeplechase Cancer Center team, expanding services to treat patients with conditions such as colon, rectal and anal cancers. Dr. Scully is trained in advanced techniques to optimize patient outcomes and speed the recovery process, including robotic and laparoscopic surgery and the use of enhanced recovery after surgery (ERAS) protocols. He is committed to providing the highest level of comprehensive colorectal care based on each patient's unique needs and individualized goals.

"I strive to provide the care I would want my family member to receive," says Dr. Scully. "This includes clear communication with patients and referring providers, close follow-up and access to clinical trials where appropriate."

Patients with colorectal cancer also now have access to a multidisciplinary clinic approach in which a Steeplechase Cancer Center nurse navigator coordinates multiple treatment modalities on the same day – including medical oncology, radiation oncology and physician appointments – to expedite treatment with greater ease and convenience.



Brendan F. Scully, MD

Expanding the Use of Scalp Cooling Treatment

Hair loss is often a concern for patients receiving certain types of chemotherapy. To address this unwelcome side effect and help retain hair, the Steeplechase Cancer Center offers Paxman Scalp Cooling technology, which lowers the temperature of the scalp during chemotherapy to reduce blood flow around hair follicles. Scalp cooling begins 30 minutes prior to chemotherapy infusion and continues until 90 minutes after infusion.

In 2022, oncology nurse navigator Kimberly Cromwell-Piniella, BSN, RN, CBCN, OCN, helped implement a more structured process to educate team members and patients on the benefits and use of the technology. This included an education session for nurses and oncologists, specific steps for infusion team members to ensure optimal success, and background information for patients. In 2022, 32 patients used the technology; they were grateful to have this opportunity and experienced various levels of success.

The team also initiated a new billing model to facilitate reimbursement from private insurance companies or Medicare on behalf of patients. When insurance doesn't cover all or part of the cost, patients can still access the technology free of charge thanks to a patient assistance fund initiated through a lead gift from Steeplechase Cancer Center medical director Kathleen Toomey, MD, to Somerset Health Care Foundation.



Kimberly Cromwell-Piniella, BSN, RN, CBCN, OCN oncology nurse navigator, left, meets with a patient

New Educational Series Starts with Chemo Brain Session

In an interdisciplinary effort coordinated by oncology dietitian Karen Connelly, RD, CSO, the Steeplechase Cancer Center launched a new educational cancer survivorship series in 2022. Because many patients experience similar types of side effects related to treatment, the series validates what they're feeling and provides important tools to help them manage these issues.

The series began with an in-person and virtual event on "Overcoming Chemo Brain." Facilitated by nurses and speech therapists, the event provided tips for recognizing and managing the cognitive challenges that can be experienced by many cancer patients and survivors long after treatment has been completed. RWJUH Somerset speech therapists also offer a treatment program specific to chemo brain.



Karen Connelly, RD, CSO, oncology dietitian, stocks nutrition supplement drinks to be distributed as part of the Food Insecurity Program.

Food Insecurity Program Continues to Grow

In 2022, the Steeplechase Cancer Center implemented a more formal approach to identify patients at nutritional risk and facilitate early intervention by initiating the use of the malnutrition screening tool (MST) across oncology practices and for patients receiving infusion and radiation therapy care. In addition to assessing for food insecurity with the hunger vital sign screening, patients identified as being at nutrition risk via the MST are referred to oncology dietitian Karen Connelly, RD, CSO.

Throughout the year, the Food Insecurity Program conducted a hunger vital sign screening for 554 patients and identified 41 who were food insecure. Patients in need received nutritional assistance such as emergency food boxes, grocery store gift cards, nutrition supplement drinks from an on-site food pharmacy and referrals to additional resources from RWJUH Somerset social workers.

"Many people are finding it difficult to make ends meet, especially with rising costs at the grocery store," says Connelly. "Helping patients achieve good nutrition means they are more able to maintain energy levels, weight and muscle mass while better tolerating treatment and side effects."

CLINICAL RESEARCH ADVANCES CANCER CARE

Clinical Trial Overview

RWJUH Somerset's partnership with Rutgers Cancer Institute of New Jersey – the state's only National Cancer Institute-Designated Comprehensive Cancer Center – enables people throughout the region to benefit from the latest clinical trials. Clinical research is embedded in the Steeplechase Cancer Center culture, with physicians, nurses and other team members ensuring that patients understand their options and opportunities, resulting in robust patient accrual.

In 2022, 139 patients were enrolled in clinical trials, including 37 in therapeutic trials and 102 in the men's prostate cancer screening trial. RWJUH Somerset participates in about 30 of Rutgers Cancer Institute's 218 clinical trials, including those for breast, lung, gynecologic, gastrointestinal and genitourinary cancers.

"We select the clinical trials we participate in based on the needs of our patients, and we focus heavily on trials examining the latest cutting-edge treatments that have the potential to positively impact outcomes," says Maria Scibilia, RN, director of oncology research at the Steeplechase Cancer Center. "In fact, all of our patients who enrolled in a clinical research trial in 2022 were able to participate in a treatment trial."



Maria Scibilia, RN, director of oncology research, and Eshan Patel, MD



Research nurse, Samantha Gonzalez, RN, BSN, reviews documents.

Spotlight on New Clinical Trials

Clinical trials that opened and began accruing patients at the Steeplechase Cancer Center in 2022 included the following:

Oral SERD Study for Breast Cancer

Following breast cancer treatment with chemotherapy and surgery, patients with estrogen receptor-positive (ER+) early breast cancer usually need endocrine therapy for five years with an oral selective estrogen receptor degrader (SERD) medication such as tamoxifen or aromatase inhibitors. This is an effective course of treatment, but some patients may experience relapse or develop resistance to these medications, while some may struggle with side effects that can cause them to stop taking the medication. This phase III, randomized study is assessing the effectiveness and safety of a new SERD called giredestrant. Researchers are studying how well this medication prevents recurrence compared to traditional treatment and whether any side effects may be better tolerated. Five patients enrolled in this trial at the Steeplechase Cancer Center in 2022.

Cipher Trial for Breast Cancer

Circulating tumor DNA (ctDNA) is fragmented DNA released into the blood stream from tumor tissue, and its presence in the blood may be linked to an increased risk of cancer relapse. This study measures ctDNA through a blood test at specific intervals in patients with early stage HER2 positive breast cancer or triple negative breast cancer during neoadjuvant chemotherapy (chemotherapy prior to surgery) and adjuvant chemotherapy (chemotherapy after surgery). This non-randomized trial is examining how monitoring ctDNA levels impacts treatment decisions by physicians, and how this treatment affects ctDNA levels. It seeks to learn whether the early detection of ctDNA may help tailor adjuvant therapy and reduce the risk of breast cancer relapse. Nine patients enrolled in this trial at the Steeplechase Cancer Center in 2022.



Joanne Laub

Paving the Way for Future Cancer Care

Joanne Laub of Branchburg always took pride in maintaining a healthy lifestyle – from running and working out to eating well and drinking plenty of water. Then last summer, when a colonoscopy identified a concerning tumor and further testing confirmed stage 3 rectal cancer, she felt like her world was crumbling.

“I’ve taken care of myself my entire life, but cancer doesn’t discriminate,” says Joanne, who just turned 67 and is a preschool teacher in Hillsborough. “Being healthy and strong helped me get through it.”

In exploring her care options, Joanne and her husband, Pete, knew they didn’t want to travel far, and the Steeplechase Cancer Center came recommended by friends in the health field. The interdisciplinary team designed a plan of care involving neoadjuvant treatment, meaning that it would focus on reducing the size of Joanne’s tumor prior to any surgery.

At the same time, a new Phase II clinical trial became available at the Steeplechase Cancer Center for patients with rectal cancer. Joanne and Pete met with medical director Kathleen Toomey, MD, and director of oncology research Maria Scibilia, RN, to learn more about it. After careful consideration with her family, Joanne decided to enroll.

A Powerful Chemotherapy Protocol

Joanne enrolled in the Crafter clinical trial, which was similar to her recommended care plan but added another powerful chemotherapy medicine to her treatment regimen.

“I knew that I had nothing to lose by participating in the clinical trial, and that this strong combination could help me even more,” says Joanne. “I have the potential to gain from it – but medicine has everything to gain. It makes me feel good knowing that my involvement might help someone in a similar situation in the future.”

Joanne began treatment with 28 rounds of radiation therapy, five days a week for about six weeks, along with an oral chemotherapy medication. After a rest and recovery period, she underwent eight rounds of chemotherapy every two weeks. The clinical trial protocol added the medicine irinotecan to her chemotherapy mix – called FOLFOXIRI – making the regimen more intense. Irinotecan is FDA approved for use in certain cancer treatments, and researchers are examining whether the FOLFOXIRI treatment combination can help eradicate rectal cancer tumors. According to Dr. Toomey, Joanne has handled the treatment extremely well and is on the path to a cure.

Joanne, who has continued to teach throughout her treatment, is excited to return to her 16 preschoolers on a full-time schedule.

“I’m so grateful that we made the decision to receive treatment here,” she says. “From the receptionist to the nurses and physicians, everyone has been so kind and compassionate. They’ve made a difficult journey far easier.”



SUPPORT AND SURVIVORSHIP



Leslie's Dancing Stars were among the teams who participated in the Steeplechase Distance Run

Community Gathers for Steeplechase Distance Run

More than 700 cancer survivors, family members, friends, caregivers and community members participated in the 14th annual Steeplechase Distance Run in September 2022. Coordinated by Somerset Health Care Foundation, this in-person and virtual event raised more than \$81,000 for the Steeplechase Cancer Center. In addition to 10K and 5K runs, a 2-mile walk and kids' sprints, participants supported the event virtually by running, walking, swimming or biking on their own. Some also participated in a special 100-Mile Challenge by running, walking or biking 100 miles in the months leading up to the event.

The Steeplechase Distance Run was founded by Cynthia Lee, MD, a fellowship-trained breast surgeon at RWJUH Somerset and part of the RWJBarnabas Medical Group. Colin Failey, MD, a plastic surgeon with The Peer Group for Plastic Surgery, was the Titanium Sponsor for the 2022 event. Through his sponsorship, patients at the Steeplechase Cancer Center were able to participate free of charge.

Foundation Merger Strengthens Efforts

To blend resources in support of cancer services and patients, the Paul R. Nardoni Foundation merged into the Somerset Health Care Foundation in 2022. The Paul R. Nardoni Foundation is a nonprofit organization that was founded by Paul's family to carry on the legacy of the Readington Township resident who died in 2001 at the age of 32 after a five-year battle with Hodgkin's disease. Since 2002, the foundation has donated more than \$625,000 to RWJUH Somerset, helping to fund the Paul R. Nardoni Oncology Pavilion ("Paul's Place") and the Steeplechase Cancer Center. The foundation's Special Needs Fund has also provided more than \$50,000 in aid to patients at the Steeplechase Cancer Center.



Left to right: Renee Flores, Roseann Nardoni, Ren Nardoni and Ellen Nardoni, members of the Paul R. Nardoni Foundation



Lisa Lindenberg, coordinator, Sanofi US Wellness Boutique, explains the features of the new custom breast prosthesis to a patient.

Custom Breast Prostheses Now Available

The Sanofi US Wellness Boutique at the Steeplechase Cancer Center served more than 950 patients in 2022, offering personalized assistance with items like prosthetics and wigs. The Boutique also began offering the American Breast Care® Custom Breast Prosthesis, a state-of-the-art prosthesis that uses 3D scanning technology to provide a highly accurate, customized fit for women. The prostheses have advanced cooling technology, come in nearly 20 color options for skin color matching and are covered by many insurances.

"These prostheses are as close as you can get to a custom breast without undergoing reconstruction," says Boutique coordinator and certified fitter Lisa Lindenberg, who helps facilitate the 3D scanning process. "They're the lightest and most natural solution, and they fit the chest wall like a puzzle piece. We're proud to offer items like these to help patients look and feel their best."

Support Services at a Glance

The Steeplechase Cancer Center's robust support services include nurse navigator assistance, financial advocacy, social work services, nutrition counseling and genetic counseling. Patient support in 2022 also included the following:

- The Sanofi US Wellness Boutique served more than 950 patients.
- 22 patients used Paxman Scalp Cooling technology to help prevent hair loss.
- 152 patients received 1,236 free trips through transportation services provided by a patient assistance fund generously supported by donors to Somerset Health Care Foundation.
- Virtual cancer support groups had 1,556 patient encounters. Additional virtual support services included cooking and nutrition, chair yoga, gentle yoga and a Wellness Workout class.



Left to right: Kathleen Toomey, MD, Medical Director, Steeplechase Cancer Center, Georgia S. Zaiser, Head of School, Far Hills Country Day School, John P. McDonald, Somerset County Prosecutor, Patrick Delaney, Chief Administrative Officer

In 2022, the incredible support of the community included the Somerset County Prosecutor's Office PBA Local 307 Children's Holiday Party, which joyfully returned to an in-person event to donate toys to children of Steeplechase Cancer Center patients. Representatives from the Far Hills Country Day School also attended and presented gift cards to the families.



Evelyn Sanchez

Support Through the Journey

When Evelyn Sanchez discovered a lump below the skin of her right breast, it marked the beginning of an odyssey. First came the startling diagnosis: Evelyn had stage 2 breast cancer and tested positive for HER2, a protein that promotes the growth of cancer cells. This form of breast cancer is disturbingly uncommon for a woman her age.

Steeplechase Cancer Center medical director Kathleen Toomey, MD, laid out a stepwise treatment plan for Evelyn. It started with 12 weeks of chemotherapy to shrink her tumor. She also enrolled in a clinical trial that added two HER2-targeted drugs to standard chemotherapy. Evelyn experienced some treatment-related side effects, but oncology nurse navigator Kimberly Cromwell-Piniella BSN, RN, CBCN, OCN, helped her with care details and coping strategies.

Next came an oncoplastic lumpectomy procedure performed by Deborah Lue, MD, followed by radiation therapy with radiation oncologist Laura Bond, MD. Evelyn found additional support through the Sanofi US Wellness Boutique. Finally, when doctors found tiny amounts of cancer cells remaining in her breast after surgery, additional chemotherapy was combined with the anti-HER2 treatment from the clinical trial. She wrapped up her year-long regimen in spring 2022.

Evelyn's positive experience at Steeplechase Cancer Center has inspired her to pay it forward. With support from her husband, Jason, and children, Fabian and Camila, she plans to become a medical assistant. Meanwhile, Steeplechase staff will monitor her health for years to come – and she's glad to be making many more memories with her family.

Staff Spotlight

In 2022, Infusion Center nurse Theresa Powell, BSN, RN received RWJUH Somerset Employee of the Month recognition, earned a DAISY Award® for nursing excellence and had the opportunity to represent the hospital at the American Nurses Credentialing Center (ANCC)'s National Magnet Conference®/ Pathways to Excellence Conference® held in Philadelphia, where RWJUH Somerset was recognized for earning its third Magnet® designation.

Powell's DAISY Award nomination recounted the words of an appreciative family member: "My husband had much trepidation about his infusion, but Terry made them all disappear. She is beyond caring and so skillful. Such a devoted, patient nurse is a joy to know."



Infusion Center nurse Theresa Powell, BSN, RN

Clinical Cancer Services

The Steeplechase Cancer Center offers a broad range of clinical services, including:

- Clinical trials
- Diagnostic services, including 3D mammography and the Lung Cancer Screening Program
- Genetic counseling
- Infusion therapy
- Laboratory services
- Medical oncology
- Oncology rehabilitation services
- Pathology
- Plastic and reconstructive surgery
- Radiation therapy
- Radiology, including PET/CT
- Surgical oncology, including minimally invasive and robotic techniques

Cancer Support Services

The Steeplechase Cancer Center's support services include:

- Complementary medicine and exercise programs
- Nutrition counseling and education
- Patient resource library
- Patient support groups
- Social work services
- Sanofi US Wellness Boutique
- Survivorship programs

Quick Access Numbers

Administration.....	908-927-8714
Breast Cancer Patient Navigator.....	908-252-4053
Breast Imaging Center.....	908-704-3740
Cancer Registry.....	908-704-3755
Chinese Medical Program	908-595-2322
Genetic Counseling	908-243-8692
Hispanic Medical Program	908-927-8798
Indian Medical Program.....	908-595-2348
Infusion Center	908-927-8720
Lobby Reception	908-927-8721
Lung Cancer Screening.....	855-RWJ-LUNG (855-795-5864)
Occupational Therapy.....	908-685-2945
Oncology Dietician	908-704-3784
Oncology Patient Navigator	908-685-2902
Oncology Research.....	908-685-2481
Radiation Oncology.....	908-927-8777
Sanofi US Wellness Boutique.....	908-927-8779
Social Work	908-685-2954
Survivorship Care Planning	908-243-8660

For a referral to an RWJBarnabas Health cancer specialist, call **844-CANCERNJ (844-226-2376)**.

30 Rehill Avenue
Somerville, NJ 08876
844-CANCERNJ

rwjbh.org/somerset
rwjbh.org/beatcancer

**Robert Wood Johnson
University Hospital
Somerset**
Steeplechase Cancer Center
**RWJ Barnabas
HEALTH**

RUTGERS
Cancer Institute
of New Jersey
RUTGERS HEALTH

Let's beat cancer together.

As the state's only NCI-Designated Comprehensive Cancer Center, Rutgers Cancer Institute of New Jersey together with RWJBarnabas Health offer the most advanced cancer treatment options close to home.

