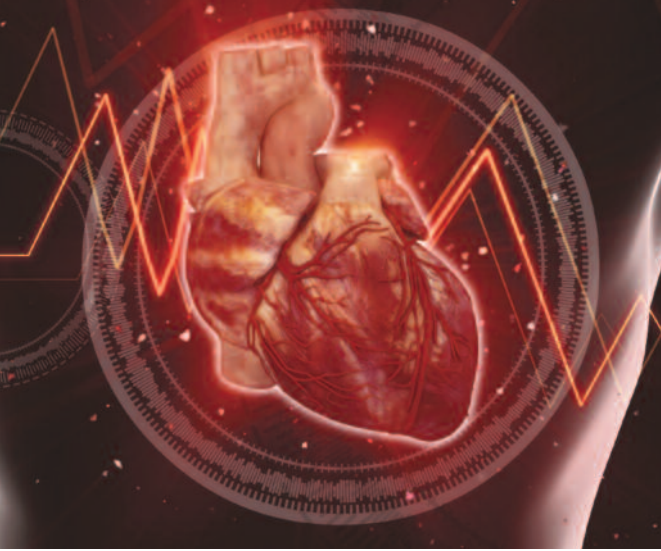


CARDIOVASCULAR SERVICES AT NEW BRUNSWICK



Robert Wood Johnson University Hospital in New Brunswick, in partnership with Rutgers Robert Wood Johnson Medical School is a tertiary referral center for cardiac care, heart surgery and transplant. RWJ offers a team of nationally known cardiac and vascular specialists along with the highest quality patient care from our Magnet nursing staff.

ABOUT THE FACILITY

- Full-service diagnostic labs with complex interventional capabilities and myocardial biopsy for transplant services
- RWJ is one of two hospitals in the state certified to perform heart transplants
- The heart surgery program also offers full thoracic aortic surgery including ascending, arch, descending, thoraco-abdominal and thoracic aortic stent grafting
- Chest pain observation unit in the Emergency Department
- Three dedicated cardiac operating rooms and an 18-bed ICU specifically for recovering hearts
- Hybrid operating room equipped for a smooth transition between endovascular and surgical procedures



STRUCTURAL HEART

- Comprehensive medical treatment for endovascular repair of valvular disorders including TAVRs, MitraClip, paravalvular leak repair and balloon valvuloplasty.
- Congenital structural abnormalities:
 - ASDs
 - VSDs
 - PFOs

INVASIVE CARDIOLOGY

- Over 60 providers specializing in diagnostic and interventional cardiology and electrophysiology
- Myocardial biopsy for transplant services
- Simple and complex ablations
- Nationally-known hospital for Stereotaxis ablation treatment

CARDIAC SURGERY

- Ventricular Assist Device (left, right)
- CABG (coronary artery bypass grafting)
- MAZE (procedure for atrial fibrillation)
- Minimally invasive valve surgeries
 - AVR (aortic valve repair/replacement)
 - MVR (mitral valve repair/replacement) including robotic
 - TVR (tricuspid valve repair/replacement)
- Thoracic aneurysm repair
 - Aortic dissection repair
 - Bentall procedure
 - Valve sparing aortic root placement
 - Florida sleeve procedure
 - Aortic arch debranching
 - Thoracic endovascular aneurysm repair (TEVAR)
 - Ascending aortic aneurysm repair
- Valve and Aortic Center

VASCULAR SURGERY

- Endovascular and open abdominal and thoracic aneurysm repair
- Carotid endarterectomy, carotid angioplasty and stenting
- Dialysis access
- Endovascular and open surgical treatment for claudication and limb salvage
- Treatment of vascular malformation
- Minimally-invasive treatment of varicose veins and venous disease

CARDIOVASCULAR SERVICES AT SOMERSET



Robert Wood Johnson University Hospital Somerset offers a wide-range of diagnostic and interventional cardiology and vascular services with convenient access for your patients.

Addition of a newly built cath lab enables over 25 specialty-trained cardiologists to provide the highest quality of care.

Direct and efficient real time access to the New Brunswick campus is also available for complex cases.

INVASIVE CARDIOLOGY:

- Low-risk elective and acute PCI (angioplasty)
- Full-service diagnostic labs with interventional capabilities
- Pacemaker and loop recorder implantation
- Peripheral angiography and interventional capabilities

NON-INVASIVE CARDIOLOGY:

- Transthoracic Echocardiogram (TTE)
- Transesophageal Echocardiogram (TEE)
- Stress Testing
 - Exercise
 - Pharmacological
 - Nuclear
- Electrocardiogram
- Cardiac monitoring
 - 24 hour Holter Monitors
 - Event Monitors
- Cardioversion

VASCULAR:

- Carotid duplex
- Peripheral venous duplex
- Peripheral arterial duplex and doppler
- Renal and aortic artery duplex

