

- 1 ACC Retail Pharmacy Division
- 2 Ambulatory Care Pharmacy Division
- 3 Barnabas Health Behavioral Health Center Pharmacy Division
- 4 Cancer Institute of New Jersey Pharmacy Division
- 5 Children's Specialized Hospital Pharmacy Division
- 6 Clara Maass Medical Center Acute Care & Retail Pharmacy Division
- 7 Community Medical Center Acute Care Pharmacy Division
- 8 Corporate Pharmacy & 340B Division
- 9 Cooperman Barnabas Medical Center Acute Care & Retail Pharmacy Division
- 10 Jersey City Medical Center Acute Care & Retail Pharmacy Division
- 11 Monmouth Medical Center Southern Campus Acute Care Pharmacy Division
- 12 Monmouth Medical Center Acute Care & Retail Pharmacy Division, Ambulatory Care Pharmacy Division
- 13 Newark Beth Israel Medical Center Acute Care & Retail Pharmacy Division
- 14 Pharmacy Informatics Division
- 15 Pharmacy Reimbursement Division
- 16 Qualitas: Home Infusion, RWJBarnabas Consolidated Pharmacy Services, LSC Mail Order, Specialty & Centralized Warehouse Pharmacy Division
- 17 RWJ University Hospital at Hamilton Acute Care Pharmacy Division, Ambulatory Care Pharmacy Division
- 18 RWJ University Hospital at New Brunswick Acute Care Pharmacy Division
- 19 RWJ University Hospital at Rahway Acute Care Pharmacy Division
- 20 RWJ University Hospital at Somerset Acute Care Pharmacy Division



Pharmacy Enterprise

RWJBarnabas
HEALTH

2021 Annual Report

Our Vision

“ The Pharmacy Enterprise will be a national leader in providing progressive, high quality, patient-centered, cost effective pharmacy services across the continuum of care in the dynamic healthcare landscape “

Table of Contents

| | |
|---|----|
| Letter from the Chief Pharmacy Officer..... | 4 |
| Governance and Structure..... | 7 |
| Pharmacy Enterprise Collaboratives..... | 16 |
| Pharmacy Enterprise Divisions..... | 50 |

Actively Seeking Excellence: 2021 Summary

| | |
|-------------------------------|-----|
| Advocacy..... | 82 |
| Community..... | 92 |
| Education..... | 95 |
| Financial..... | 99 |
| Quality and Safety..... | 101 |
| Research and Publication..... | 110 |

“Actively Seeking Excellence”

A MESSAGE FROM THE CHIEF PHARMACY OFFICER

**Indu Lew, PharmD**

Executive Vice President and Chief Pharmacy Officer

I am honored to present the 2021 Annual Report for the RWJBarnabas Health Pharmacy Enterprise. This annual report highlights the outstanding work our team achieves daily and the successful initiatives that transform the quality of care for our patients. These exceptional accomplishments are attributed to the philosophy of our group, “Actively Seeking Excellence.”

Overview and Philosophy

The Pharmacy Enterprise is an integrated system of divisions with accountability for clinical, quality, safety, social and financial outcomes related to medication use across the continuum of care in our health system. The Pharmacy Enterprise has 25 divisions across two distinct service lines, Acute Care Services and Integrated Services. Our Acute Care Service Line is comprised of 13 hospital divisions and our Integrated Service Line is comprised of 12 divisions: 340B Drug Pricing, Ambulatory Care, Rutgers Cancer Institute of New Jersey, Corporate Pharmacy, Informatics, Pharmacy Reimbursement Division, Retail Pharmacy Network, and Qualitas, our wholly owned pharmacy services company. Qualitas provides five unique services: Home Infusion, Hospital Services [Centralized Warehouse and Hospital Compounding/Repacking], Employee Mail Order Prescriptions and Specialty Pharmacy.

Effective leadership is predicated on clear communication. The Pharmacy Enterprise leadership has taken this fundamental tenet and distilled it to one word that is chosen each year to guide performance. Asking a diverse group of pharmacy stakeholders to focus their annual priorities through one word is a strategy that has accelerated unity and execution of goals and tactics. The Pharmacy Enterprise chose the word “Resiliency” for 2021. Resilience is the ability to bounce back and recover from difficult life events, the ability to grow despite challenges encountered. Resiliency is not being on a trampoline, where one minute you are up and the next minute you are down. It’s more like climbing a mountain without a guide map. It takes strength and help from the people around you, but at some point, when looking back, the thoughts are, “I don’t know how we did it, but look how far we’ve gone.” Every facet of pharmacy has been impacted by the pandemic, yet the Pharmacy Enterprise has continued to maintain balance, provide optimal and safe patient care, all while ensuring operational efficiency in the face of uncertainty – that is resiliency.

COVID-19 Vaccine

Beginning in late 2020, the Pharmacy Enterprise began working on an administration and distribution plan for COVID-19 vaccines. Corporate Pharmacy led the charge, coordinating multiple divisions and facilities across the system to create a registration, screening and administration platform that would meet the regulatory requirements associated with the vaccines approved under an Emergency Use Authorization (EUA). After the COVID-19 vaccines were approved and delivered to our sites, pharmacists, technicians and pharmacy leaders in every division of our health system joined together in tackling logistical challenges never before encountered with any other vaccination roll out. Members of the Pharmacy Enterprise were and continue to be, actively engaged in ensuring that state vaccination records are correct and up-to-date for those who have received a vaccine in our organization. With the combined efforts of so many, our hospital pods and the mega center, over 500,000 vaccine doses have been administered in 2021.

COVID-19 Therapeutics

The COVID-19 pandemic led to therapeutic innovation for not only the prevention, but also treatment of COVID-19. The Pharmacy Enterprise worked with industry partners, state, and federal government liaisons along with subject matter experts within our organization to allow for the administration of COVID-19 therapeutics as soon as they were available. Because of these proactive efforts prior to and immediately after the EUA, RWJBarnabas Health was one of the first sites in NJ to offer monoclonal antibodies (MAB) for COVID-19. Pharmacy worked closely with its partners in Infectious Diseases, the Emergency Department, and the Combined Medical Group to provide a safe and streamlined approach for patients who met criteria to receive MABs. With these new treatments’ ability for patients to recover from COVID-19 safely at home and

A MESSAGE FROM THE CHIEF PHARMACY OFFICER

the close telemedicine follow-up from providers in our medical group, our inpatient units were able to provide care to patients who were at a higher acuity level. At the time of the writing of this document, RWJBH facilities have administered MABs to 11,600 patients, preventing hospitalizations in 96 percent of recipients.

Plan for Epic

The Pharmacy Enterprise has been integrally involved with the Epic Together project. Over the course of 2021, the team logged thousands of hours collaborating with other divisions and approached their involvement in each element of the Epic project with a patient safety focus. Throughout the entire process, the team always advocated those systems be in place that align with our High Reliability principles. They partnered with subject matter experts across multiple specialties, informatics, billing, reimbursement, and external vendors. Over 300 order sets were carefully reviewed with teams of experts which led to formulary standardization and policy updates to ensure we provide evidence-based care for our patients. In 2021, the Pharmacy Enterprise also participated in the conversion of RWJ-Somerset to Epic. Pharmacists from across the enterprise worked diligently to re-enter all medication orders in Epic and support the Somerset team as they transitioned workflows and processes associated with the Epic installation.

Acute Care and Ambulatory Care Division

The pharmacists and technicians across the enterprise performed over 2.72 million and 532,394 clinical activities respectively. These activities resulted in better care for our patients and a cost avoidance of over \$8,617,550. Our team aspires to provide the safest environment for our patients by recognizing the potential for adverse medication events and preventing them before they occur. More than 89,041 adverse drug reactions and over 207,921 medication errors were prevented. Mitigating errors and harm were accomplished by several strategies, including clarification of orders, performing accurate medication histories and medication reconciliations ensuring patients are receiving the five rights of medications: the patient, drug, dose, route and time. The team also performed over 25,910 medication reconciliations and 16,649 medication histories. Additionally, the Pharmacy Enterprise provided over 288 community outreach programs.

Retail Pharmacy

The Retail Pharmacy Division dispensed nearly 173,165 prescriptions. Ensuring patients leave our hospitals with prescriptions may decrease medication-related readmissions and improve medication adherence. The “Meds to Beds” program of the Retail Pharmacy Division processed over 13,098 prescriptions for 6,457 patients prior to discharge.

Pharmacists can help ensure that patients without insurance in the community continue to have access to medications. The Retail Pharmacy Division has provided over 1,789, 30-day prescriptions to approximately 575 patients. This was possible through the partnership with the Dispensary of Hope, a charitable medication distributor. The division also generated a net benefit of over \$902,000 to the system.

Qualitas

The Qualitas Home Infusion Division continues to provide safe and quality care to the community. Our nurse colleagues performed more than 25,894 home visits, maintaining over 79,172 line days and administering approximately 106,848 IV medications. While the national average for line infection rates is 3.5 per 1,000 patient days, Qualitas continues to over perform by decreasing its line infection rates from 0.1, 0.19, 0.01 and <.01 in 2018, 2019, 2020 and 2021, respectively. The division provided over \$4.4 million in net benefit to the health system.

Eighty percent of new drug approvals are specialty medications. Specialty medications expect to increase to 50 percent of drug costs and grow to \$500 billion by 2022. The Specialty Pharmacy team at Qualitas filled more than 89,032 prescriptions for our patients, generating a net benefit of over \$12.5 million to the system.

Medication shortages continue to burden health systems. In 2019, in order to mitigate the shortage supply, a centralized warehouse was established. The centralized warehouse strategies further evolved to leverage the buying power of the system. These combined initiatives have realized over \$ 9.5 million savings to the

A MESSAGE FROM THE CHIEF PHARMACY OFFICER

health system. The central warehouse was also instrumental in our system's COVID-19 vaccination efforts with the Mass vaccination centers in Edison and Bridgewater.

Pharmacy focuses not only on the patients of the community, but on the employees as well. The Employee Mail Order Division filled more than 73,983 prescriptions for employees and their families. They coordinated more than 3,163 medication deliveries, averaging nine prescriptions per day to employees' homes. Due to leveraging own use pricing, the Division has saved the health system over \$2 million. In addition, the co-pay card optimization program generated over \$2.7 million in savings to our employees.

Focus on academics

As the largest academic health system in NJ, education is a cornerstone for the Pharmacy Enterprise. The partnership with Rutgers continues to foster the importance of education, research, and publications. This is evidenced by our education efforts and dedication to training pharmacy students and residents. The team provided advanced clinical clerkship rotations for over 651 students. The Pharmacy Residency Program has continued sustainability and growth with 9 Post Graduate Year 1 programs and six Post Graduate Year 2 programs.

The Pharmacy Enterprise team is nationally and internationally recognized as educators and presenters. In 2021, they completed over 91 formal lectures, locally, regionally and nationally. The team completed 42 peer-reviewed manuscripts, book chapters, guidelines and articles. A total of 20 abstracts were presented at local and national meetings.

Additional Milestones

The 340B Division optimized the automated system for patient eligibility resulting in an annualized net benefit of \$ 92 million dollars, an increase of 21 % from 2020.

Our Pharmacy Informatics Division performed over 3,400 safety enhancements to our Enterprise Clinical Information Systems which serves as a foundation for all care providers when treating our patients. Many of the projects involved information technology changes toward the goals of standardizing builds, processes, and workflows for the Pharmacy Enterprise.

Our Pharmacy Reimbursement Division (PRD) recovered over \$4.3 million in 2021 and \$46.5 million since program inception (2009) for the Acute Care Service Line. PRD reviewed and ensured medication billing on almost 5,200 billing, coding, charge capture and reconciliation activities.

Building on Excellence

Pharmacy leadership has chosen the word "Unify" for 2022. "Unify" centers on the essential principles of harmonized health system workflows in anticipation to the migration to Epic and the integration with Trinitas Regional Medical Center.



Governance and Structure

Pharmacy Enterprise Executive Council

The RWJBarnabas Health Executive Council is responsible for defining, prioritizing, overseeing and monitoring the performance of the pharmacy enterprise. The focus of the committee is operations, clinical activities and integrated services within the enterprise.

The committee is guided by analyzing and aggregating enterprise and service line performance data, monitoring performance improvement efforts for effectiveness, and making recommendations for enterprise or individual service line changes.

The Executive Pharmacy Council is the approval entity for recommendations from the Pharmacy Directors and Clinical Pharmacy Councils

Membership

Chair: RWJBarnabas Health Executive Vice President and Chief Pharmacy Officer

Members: Corporate Vice President of Integrated Pharmacy Services, Vice President of Qualitas Pharmacy Services, Corporate Director of Pharmacy Systems Integration, Corporate Director of Clinical Pharmacy Services and Corporate Director of Pharmacy Operations, Corporate Director 340B Program

Meetings

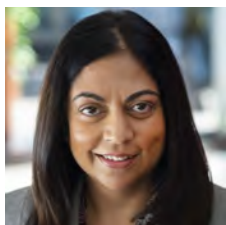
The Executive Pharmacy Council shall meet monthly or as otherwise deemed necessary by the Chair, but not less than quarterly

Duties and Responsibilities

- Enterprise-wide clinical and operational performance improvement, tracking progress, identifying barriers, and discussing possible solutions
- Reviews and recommends a multi-year strategic plan with long term and annual improvement targets
- Approves and monitors a dashboard of key performance indicators
- Provides oversight, monitoring and assessment of key organizational processes, outcomes, and external comparative benchmarks
- Individual members accept accountability for removing barriers, assigning resources and ensuring implementation and compliance of goals and policy of the Pharmacy Enterprise
- Serves as forum for identification of best practices and oversees the management of strategic workforce
- Recognizes and recommends advocacy forums for teammates' accomplishments
- Oversees, evaluates and revises the Quality Improvement and Patient Safety Plan
- Provides annual update to the RWJBarnabas Health Quality Executive Council on service line performance on selected benchmarks, performance improvement projects and compliance with regulatory requirements
- Creation of Pharmacy Enterprise Annual Report for internal and external distribution

Sub-Councils

Pharmacy Directors Council
Clinical Pharmacy Council

**Indu Lew, PharmD**

Executive Vice President and
Chief Pharmacy Officer
Chair of Executive Council

**Bryan McCormick,
CPhT, MBA**

Corporate Director 340B
Program

**Doug DeStefano,
PharmD**

Corporate Director of Pharmacy
Operations

**Ellen Secaras, MBA,
RPh**

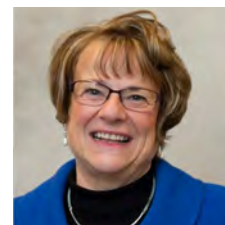
Corporate Director of Pharmacy
Systems Integration

**Jennifer Sternbach,
PharmD, BCPS,**

Corporate Director of Clinical
Pharmacy Services

**Robert Pellechio, RPh,
MPA**

Corporate Vice President of
Integrated Pharmacy Services

**Suzanne Sesta, RPh,
BCSCP**

Vice President of Qualitas
Pharmacy Services

Pharmacy Enterprise Directors Council

The RWJBarnabas Health Pharmacy Enterprise Directors Council is responsible for establishing system-wide pharmacy goals, overseeing and monitoring the performance of all medication management activities throughout the system and collaborating with the Clinical Pharmacy Council in carrying out these activities. The Council works to standardize processes, standardize policies, establish metrics to measure progress and expand the role of the pharmacist in the system so that they practice to the full extent of their licensure. The Council monitors the use of automation, standardizes equipment selections, monitors facilities so that they remain compliant with current regulations, and develops and approves system policies for the pharmacists in the system.

Membership

Chair: Corporate Director of Pharmacy Operations

Members: RWJBarnabas Health Executive Vice President and Chief Pharmacy Officer, Corporate Vice President of Integrated Pharmacy Services, Vice President of Qualitas Pharmacy Services, Corporate Director of Pharmacy Systems Integration, Corporate Director of Clinical Pharmacy Services, and Directors of Pharmacy from the Acute Care and Integrated Services Lines

Meetings

The Pharmacy Directors Council shall meet monthly or as otherwise deemed necessary by the Chair, but not less than quarterly

Duties and Responsibilities

- Establishment of system-wide quality improvement activities, tracks progress by facility as well as aggregately towards completion, identifying any barriers, discussing and implementing solutions to overcome them
- Monitors key performance indicators and workload statistics
- Monitors medication errors and ADRs to implement standardized prevention methods
- Coordinates care of patients beyond the acute care setting
- Standardizes automation and equipment, reference materials, formulary process, medication use policies, tracking on activities, interventions and identification of ADRs
- Standardizes processes and policies throughout the system
- Increases compliance with Group Purchasing Organization (HPG) contracts to maximize value
- Develops career opportunities for staff development and career ladders
- Works to expand the practice of pharmacy and the role of the pharmacist within the system

Sub-Committees

Clinical Pharmacy Council

Collaboratives

Informatics Collaborative
Pharmacy Buyers Collaborative
Sterile Products Collaborative
Procurement Collaborative
Medication Management Collaborative
Oncology Collaborative



Doug DeStefano,
PharmD

Corporate Director of Pharmacy
Operations
Chair of Directors Council



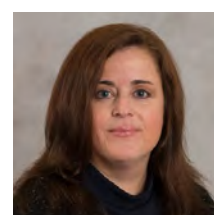
Anita McNeill, RPh,
BCSCP

Director of Pharmacy, Qualitas
Pharmacy Services



Bryan McCormick, CPhT,
MBA

Corporate Director 340B
Program



Christine Tricarico,
PharmD, MBA

Director of Pharmacy Services,
Children's Specialized Hospital



Ellen Secaras, MBA,
RPh

Corporate Director of Pharmacy
Systems Integration



Fernando Oliveira

System Director of
Pharmaceutical Procurement,
Qualitas Pharmacy Services



Gary Del Piano, PharmD

Director of Pharmacy Services,
Monmouth Medical Center
Southern Campus



Heather DeSanto,
PharmD, BCSCP

Director of Pharmacy Services,
Cooperman Barnabas Medical
Center



Indu Lew, PharmD

Executive Vice President and
Chief Pharmacy Officer



Jennifer Sternbach,
PharmD, BCPS, BCACP

Corporate Director of Clinical
Pharmacy Services



Jodie Skayhan, PharmD

Administrative Director,
Pharmacy, RWJ University
Hospital at New Brunswick



Joe Voelkel, RPh

Assistant Vice President, Retail
Pharmacy Network



Jonathan Margolin, MHA,
RPh, ACHE

Director of Pharmacy Services, RWJ
University Hospital at Hamilton



Lynne Goldstein, RPh,
MBA

Director of Pharmacy Services,
Community Medical Center



Maria DeVivo, PharmD,
MPA, BCPS, BCACP

Director of Pharmacy Services,
Jersey City Medical Center



Michael P. Kane, RPh,
BCOP

Executive Director,
Oncology Pharmacy Services
Rutgers Cancer Institute of New
Jersey



Mona Philips, RPh, MAS

Director of Pharmacy Services,
Clara Maass Medical Center



Robert Pellechio, RPh,
MPA

Corporate Vice President of
Integrated Pharmacy Services



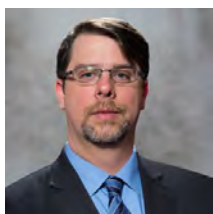
Ronald Simbulan, RPh

Director of Pharmacy, Qualitas
Pharmacy Services and LSC
Mail Order



Sandra Richardson,
PharmD, CCP

Director of Pharmacy Services,
Newark Beth Israel Medical
Center



Scott Mathis, PharmD

Regional Director of Pharmacy
Services, Monmouth Medical
Center Campuses



Sheetal Patel, PharmD,
BCPS

Director of Pharmacy Services,
RWJ University Hospital at
Rahway



Stuart Vigdor, BS Pharm,
RPh

Director of Pharmacy Services,
RWJ University Hospital at
Somerset



Suzanne Sesta, RPh,
BCSCP

Vice President of Qualitas
Pharmacy Services

Kim Walsh, RPh, MBA

Director of Pharmacy Services,
Behavioral Health

Pharmacy Enterprise Clinical Council

The RWJBarnabas Health Pharmacy Enterprise Clinical Council is responsible for developing, operationalizing and monitoring the clinical pharmacy initiatives within the Pharmacy Enterprise. The focus of the council is to garner consensus amongst the clinical coordinators and managers within the acute care and integrated services divisions. The council is guided by evidence-based medicine and results of the performance improvement recommendations from the Pharmacy Directors Council and the Executive Pharmacy Council.

Membership

Chair: Corporate Director of Clinical Pharmacy Services

Members: RWJBarnabas Health Executive Vice President and Chief Pharmacy Officer, Corporate Vice President of Integrated Pharmacy Services, Vice President of Qualitas Pharmacy Services, Corporate Director of Pharmacy Systems Integration, Corporate Director of Pharmacy Operations, Corporate Assistant Director of Clinical Pharmacy Services and Clinical Leadership from the Acute Care and Integrated Services Lines

Meetings

The Clinical Pharmacy Council shall meet monthly or as otherwise deemed necessary by the Chair, but not less than quarterly

Duties and Responsibilities

- Implements strategies for system wide clinical pharmacy performance initiatives including operational oversight, education, monitoring, identifying barriers, and discussing possible solutions
- Incorporates the continuous quality improvement philosophy and methodologies to facilitate changes that support the Quality Portfolio
- Communicates clinical goals, tactics, activities and results
- Recognizes and celebrates successful performance improvement efforts
- Monitors medication errors and ADRs to implement standardized prevention methods
- Individual members accept accountability for removing barriers, assigning resources and ensuring implementation and compliance of goals and policies of the Pharmacy Enterprise
- Provides leadership, professional development, advocacy and resources that enable pharmacists to achieve excellence in practice
- Serves as a forum for identification and consensus of best practices
- Recommends and implements institutional policies and procedures related to quality, patient safety and performance improvement initiatives
- Advances clinical pharmacy through support and promotion of research, training and education

Collaboratives

Infectious Diseases Collaborative
Emergency Department Collaborative
Pediatric Collaborative
Ambulatory Care Collaborative
Residency Ambassadors
Critical Care Collaborative
Psychiatric Collaborative



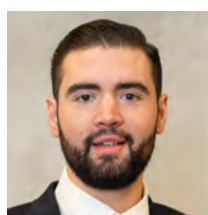
Jennifer Sternbach,
PharmD, BCPS, BCACP

Corporate Director of Clinical
Pharmacy Services
Chair of Clinical Council



Aimee Patel, PharmD,
BCACP

Ambulatory Care Clinical
Specialist, Clinical Assistant
Professor; Ernest Mario School of
Pharmacy



Alexander Clark,
PharmD, BCPS

Clinical Specialist, Monmouth
Medical Center Southern Campus



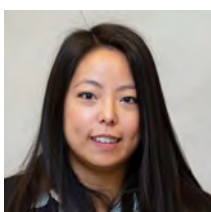
Alison Brophy, PharmD,
BCPS, BCCCP

Assistant Director, Pharmacy Clinical
Services, Cooperman Barnabas
Medical Center



Alyssa Gallipani,
PharmD, BCACP

Ambulatory Care Clinical Specialist,
PGY2 Ambulatory Care Residency
Program Director, Clinical Assistant
Professor, FDU



Connie Ho, PharmD,
MBA

Clinical Coordinator, Qualitas
Pharmacy Services



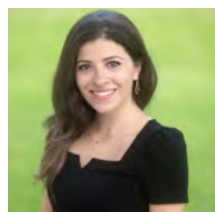
Doug DeStefano,
PharmD

Corporate Director of Pharmacy
Operations



Ellen Secaras, MBA,
RPh

Corporate Director of Pharmacy
Systems Integration



Emily Aboujaoude,
PharmD

Clinical Assistant Professor- Rutgers
University, Ernest Mario School of
Pharmacy Drug Information
Residency Program Director- RWJ
University Hospital



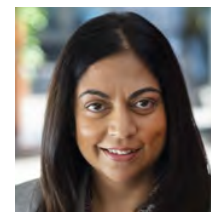
Henry Leach, PharmD,
BCPP

Clinical Coordinator, PGY2
Psychiatric Residency Program
Director, Behavioral Health



Hoytin Lee Ghin,
PharmD

Assistant Director of Clinical
Pharmacy Services, Monmouth
Medical Center



Indu Lew, PharmD

Executive Vice President and
Chief Pharmacy Officer



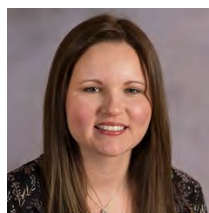
Jessica Hill, PharmD,
BCPS, BCACP, FASHP

Assistant Director of Clinical
Services, Corporate Pharmacy



Joseph Cavanaugh,
PharmD, BCPS, BCCCP

Assistant Director of Pharmacy
Services, PGY1 Program
Residency Director, Community
Medical Center



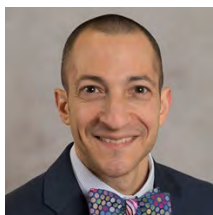
Karen Kisty, PharmD,
BCPS

Manager of Pharmacy Services,
Children's Specialized Hospital



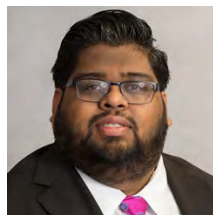
Lalitha Sukumar,
PharmD

Ambulatory Care Clinical
Specialist, Corporate
Pharmacy



Lucio Volino, PharmD

Clinical Pharmacist, Retail Network, Clinical Associate Professor Ernest Mario School of Pharmacy, Rutgers University



Mitesh M Patel, PharmD, BCCCP

Clinical Coordinator, Pharmacy PGY1 Residency Program Director, Clara Maass Medical Center



Nancy Doherty, MS, RPh

Clinical Coordinator, Medication Safety Officer, PGY1 Residency Program Director, RWJ University Hospital at Somerset



Polly Jen, PharmD, BCPS-AQ ID, AAHIVP

Assistant Director of Clinical Services, Newark Beth Israel Medical Center



Priyanka Kelshikar, PharmD, BCPS

Pharmacy Clinical Manager, RWJ University Hospital at Rahway



Rahul Jacob, PharmD

Ambulatory Care Clinical Specialist, RWJBarnabas-Rutgers Medical Group



Rahul Nakrani, MBA, MS

Clinical Financial Analyst, Corporate Pharmacy



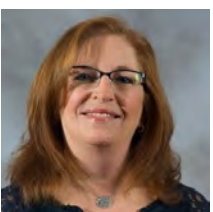
Robert Pellechip, RPh, MPA

Corporate Vice President of Integrated Pharmacy Services



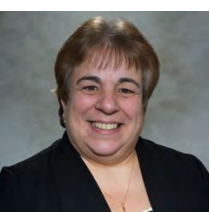
Sandy Moreau, PharmD, BCPS

Clinical Coordinator, PGY1 Pharmacy Residency Program Director, Jersey City Medical Center



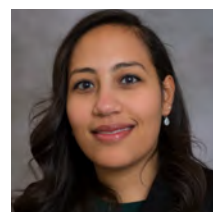
Sharon Mindel, PharmD

Assistant Clinical Director of Pharmacy, RWJ University Hospital at New Brunswick



Suzanne Caravella, PharmD, BCPS, RPh

Clinical Coordinator, RWJ University Hospital at Hamilton



Yasmine Elbaga, PharmD, BCPS

Clinical Specialist, Monmouth Medical Center Southern Campus



Pharmacy Enterprise Collaboratives

Pharmacy Enterprise Ambulatory Care/Transitions of Care Collaborative

The RWJBarnabas Health Pharmacy Enterprise Ambulatory Care Collaborative aims to provide patient centric medication therapy to the communities we serve to foster health promotion.

Mission Statement

To ensure that patients treated outside of the acute care facilities of RWJBarnabas Health received optimal medication management.

Membership

Chair: Ambulatory Care Clinical Specialist, Cooperman Barnabas Medical Center

Members: Ambulatory Care Specialists from Ambulatory Care Division, and Clinical Pharmacy Specialists from the Acute Care Service Line

Meetings

The Ambulatory Care Collaborative shall meet quarterly or as otherwise deemed necessary by the chair

How We Accomplish Our Mission

The Ambulatory Care Collaborative accomplishes their mission by connecting with the patients and communities we serve to understand specific barriers to optimal health. Pharmacists that comprise the Ambulatory Care Collaborative are equipped to help manage not only individual patient care but also broader population health initiatives. Members collaborate with other providers to ensure the continuum of care, utilize resources such as pharmacy residents and students to foster a learning environment, and broaden the reach of the division to a wider population. The collaborative tracks interventions, monitors progress of patients and initiatives, and reports successes and learning opportunities with other providers to improve the health of the patients we serve.



**Samuel Reveron,
PharmD, BCPS**

Ambulatory Care Clinical Specialist, Cooperman Barnabas Medical Center Chair of Ambulatory Care Collaborative



**Ammie Patel, PharmD,
BCACP**

Ambulatory Care Specialist, Corporate Pharmacy, Clinical Assistant Professor, Ernest Mario School of Pharmacy



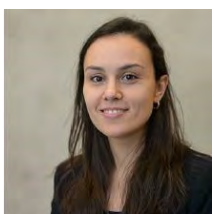
**Alyssa Gallipani,
PharmD, BCACP**

Ambulatory Care Clinical Specialist, Corporate Pharmacy PGY2 Ambulatory Care Residency Program Director, Clinical Assistant Professor, Fairleigh Dickinson University



**Christine Dimaculangan,
PharmD, BCACP**

Ambulatory Care Clinical Specialist, Jersey City Medical Center, Clinical Assistant Professor, Ernest Mario School of Pharmacy



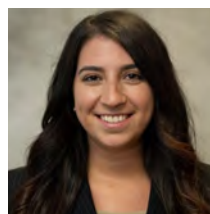
**Cristina Santos, PharmD,
BCPS**

Clinical Generalist, Internal Medicine, Clara Maass Medical Center



**Jennifer Sternbach,
PharmD, BCPS, BCACP**

Corporate Director of Clinical Pharmacy Services



Jennifer Weiss, PharmD

PGY2 Ambulatory Care Pharmacy Resident



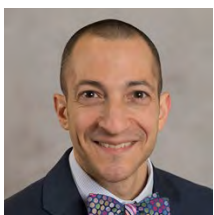
**Jessica Bente, PharmD,
BCPS, BCGP**

Clinical Specialist, Geriatrics, PGY2 Geriatrics Residency Program Director, Cooperman Barnabas Medical Center



**Lalitha Sukumar,
PharmD**

Ambulatory Care Clinical Specialist, Corporate Pharmacy



Lucio Volino, PharmD

Clinical Pharmacist, Retail Pharmacy Network and Clinical Associate Professor Ernest Mario School of Pharmacy, Rutgers University



Mary Pulidore, RN

Nurse Manager, Qualitas Pharmacy Services



Pooja Le, PharmD, CSP

Certified Specialty Pharmacist, Clinical Specialist, Qualitas Pharmacy Services



**Rahul Jacob, PharmD,
BCACP**

Ambulatory Care Clinical Specialist, Corporate Pharmacy



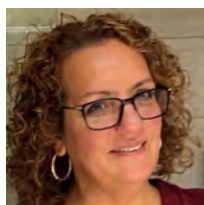
Ronald Simbulan, RPh

Director of Pharmacy, Qualitas Pharmacy Services and LSC Mail Order



**Ruben Patel, PharmD,
BCPS**

Critical Care Pharmacy Specialist, Clara Maass Medical Center



Donna Grando, PharmD

Clinical Pharmacist, Population
Health



Laurie Eckert, PharmD

Medication optimization pharmacist,
RWJ New Brunswick

Michael Diduch, PharmD, BCCP
Clinical Psychiatric Pharmacist,
Jersey City Medical Center

Patricia Hafitz, RPh, CACP
Anticoagulation Pharmacist, RWJ
University Hospital at Hamilton

Pharmacy Enterprise Critical Care Collaborative

The RWJBarnabas Health Pharmacy Enterprise Critical Care Pharmacy Collaborative is responsible for ensuring the continuum of care for critically ill patients throughout our network. The collaborative consists of Critical Care pharmacy specialists who take pride in enhancing medication management including the standardization of order sets, implementing best practices and formulary considerations as a means to promote medication safety and quality patient care. In addition to medication management and clinical expertise, the collaborative takes special interest in promoting student and resident education. Members of this collaborative are experienced in clinical research and generate numerous publications and professional presentations each year.

Membership

Chair: Critical Care Clinical Specialist, RWJ Hamilton

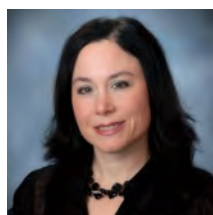
Members: Corporate Assistant Director of Clinical Pharmacy Services, Critical Care Clinical Specialists, PGY2 Critical Care Residents

Meetings

The Critical Care Pharmacy Collaborative shall meet monthly or as otherwise deemed necessary by the chair

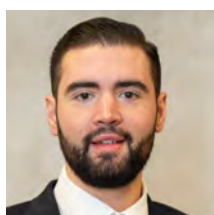
Duties and Responsibilities

- Serve as subject matter experts in Critical Care pharmacotherapy by providing recommendations to a variety of pharmacy and multidisciplinary committees at both the system and local levels.
- Standardize best practices in relation to management of critically ill patients across the enterprise.
- Assist in order set creation and review based on best evidence for our electronic health record.
- Review and make recommendations for policies and procedures relating to critical care across the enterprise.
- Provides recommendations to the Clinical Pharmacy Council and Sterile Products Collaborative regarding optimization of practice.
- Develop and execute research and quality improvement projects.
- Promote and share educational opportunities for pharmacy residents, students and pharmacists across the enterprise.



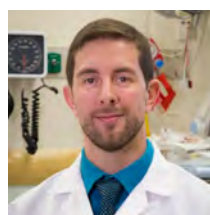
Liza Barbarello Andrews, PharmD,
RPh, BCCCP, BCPS, CHSE

Clinical Professor, Ernest Mario School of
Pharmacy, Clinical Pharmacy Specialist,
Clinical Team Lead, RWJ University
Hospital at Hamilton,
Chair of Critical Care Collaborative



Alexander Clark, PharmD

Clinical Specialist,
Monmouth Medical Center
Southern Campus



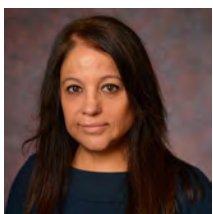
Andrew Vassallo,
PharmD, BCPS, BCCCP

Critical Care Clinical Specialist,
Community Medical Center



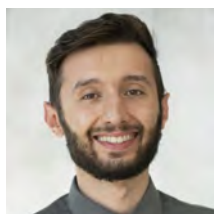
Christopher Adams, PharmD,
BCPS, BCCCP, FCCM

Critical Care Clinical Specialist,
RWJ University Hospital at
Somerset, Clinical Associate
Professor, Ernest Mario School of
Pharmacy, Rutgers University



Deepali Dixit, PharmD,
BCPS, BCCCP, FCCM

Clinical Pharmacy Specialist, RWJ
University Hospital at
New Brunswick,
Clinical Associate Professor, Ernest
Mario School of Pharmacy



Francesco Ciummo,
PharmD, BCCCP

Critical Care Clinical Pharmacist
Specialist, Cooperman Barnabas
Medical Center



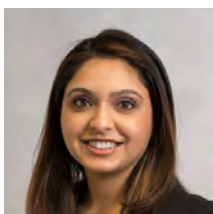
Jesse Sullivan, PharmD,
BCPS, BCCCP

Critical Care Clinical Specialist,
Critical Care PGY2 Residency
Program Director, Community
Medical Center, Clinical Assistant
Professor, FDU



Jessica Hill, PharmD,
BCPS, BCACP, FASHP

Assistant Director of Clinical Services,
Corporate Pharmacy



Leena Kansagra,
PharmD, BCPS

Critical Care/Infectious Disease
Clinical Specialist, RWJ University
Hospital at Rahway



Michelle Centrella,
PharmD, BCCCP

Critical Care Clinical Pharmacy
Specialist, Jersey City Medical
Center



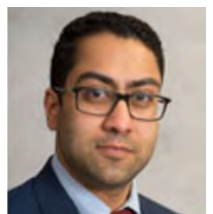
Mitulkumar Patel,
PharmD, BCCCP

Critical Care Clinical Specialist,
Newark Beth Israel Medical
Center



Priyanka Kelshikar,
PharmD, BCPS

Pharmacy Clinical Manager,
RWJ University Hospital at
Rahway



Ruben Patel, PharmD,
BCPS, BCCCP

Critical Care Clinical Specialist,
Clara Maas Medical Center



Samuel Reveron,
PharmD, MBA, BCPS

Clinical Specialist,
Cooperman Barnabas Medical
Center



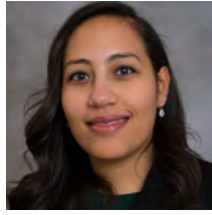
Sandra Eid, PharmD

PGY2 Critical Care Pharmacy
Resident, Community Medical
Center



Soo Kang, PharmD,
BCCCP

Critical Care Clinical Specialist,
Clara Maas Medical Center



Yasmine Elbaga,
PharmD, BCPS

Clinical Specialist,
Monmouth Medical Center Southern
Campus

Julie Saleh, PharmD,
BCPS

Critical Care Clinical Specialist,
Monmouth Medical Center,
Clinical Associate Professor,
Ernest Mario School of
Pharmacy

Pharmacy Enterprise Emergency Department Collaborative

The RWJBarnabas Health Pharmacy Enterprise Emergency Department Collaborative aims to promote safe and effective medication use in the Emergency Departments of RWJBarnabas Health.

Membership

Chair: Emergency Department Clinical Specialist, Clara Maass Medical Center

Members: Corporate Director of Clinical Pharmacy Services, and Emergency Department Pharmacy Specialists from Acute Care Service Line

Meetings

The Emergency Department Collaborative shall meet quarterly or as otherwise deemed necessary by the chair

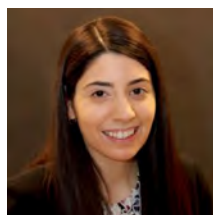
How We Accomplish Our Mission

The Emergency Department Collaborative accomplishes their mission by ensuring high quality medication administration, promoting safe medication usage, enhancing education and research to allow for advancement of public health and educational programs to all levels of health care providers. The collaborative works with their local emergency medicine physicians, nurses and other healthcare professionals to align appropriate medication therapy with emergency medication initiatives and national quality indicators. They work to refine the electronic medication ordering system to facilitate appropriate prescribing in the emergency departments. They provide recommendations to the Clinical Pharmacy Council regarding management of shortages for emergency medications. They design, execute, and report emergency medicine quality improvement research.



**Brandon Chen, PharmD,
BCPS**

Clinical Specialist, Emergency Medicine, Clara Maass Medical Center, Chair of Emergency Department Collaborative



**Dana Seroo, PharmD,
BCPS**

Emergency Medicine Clinical Decentralized Pharmacist, Newark Beth Israel Medical Center, Co-Chair of Emergency Department Collaborative



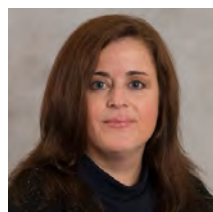
**Michelle Gardiner,
PharmD, BCGP**

Emergency Medicine Clinical Specialist, Monmouth Medical Center, Immediate Past Chair of Emergency Department Collaborative



**Angela Antonello,
PharmD, BCPS**

Emergency Medicine Clinical Pharmacist Specialist, Cooperman Barnabas Medical Center



**Christine Tricarico,
PharmD, MBA**

Director of Pharmacy Services, Children's Specialized Hospital



**Jennifer Sternbach,
PharmD, BCPS, BCACP**

Corporate Director of Clinical Pharmacy Services



Joe Voelkel, RPh

Assistant Vice President, Retail Pharmacy Network



**Marina Pittiglio, PharmD,
BCCCP**

Emergency Medicine Clinical Specialist, Community Medical Center



**Matthew Lamb, PharmD,
BCCCP**

Emergency Medicine Clinical Pharmacy Specialist, Jersey City Medical Center



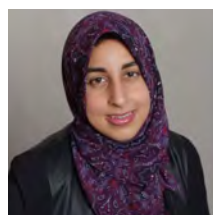
**May Nguyen, PharmD,
BCGP, BCCCP**

Emergency Medicine and Transitions of Care Pharmacist, RWJ University Hospital at Somerset, Clinical Assistant Professor, Emergency Medicine & Transitions of Care, Ernest Mario School of Pharmacy, Rutgers University



**Mitesh M Patel, PharmD,
BCCCP**

Clinical Coordinator, Pharmacy PGY1 Residency Program Director, Clara Maass Medical Center



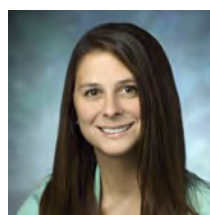
**Nadia Awad, PharmD,
MS, BCPS**

Clinical Specialist, Emergency Medicine, RWJ University Hospital at New Brunswick



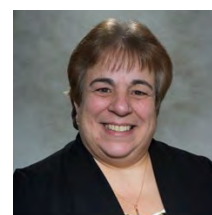
**Priyanka Kelshikar,
PharmD, BCPS**

Pharmacy Clinical Manager, RWJ University Hospital at Rahway



**Rebecca Patterson,
PharmD**

Emergency Medicine Clinical Specialist, Community Medical Center



**Suzanne Caravella,
PharmD, BCPS, RPh**

Clinical Coordinator, RWJ University Hospital at Hamilton



Yasmine Elbaga,
PharmD, BCPS

Clinical Specialist, Monmouth
Medical Center Southern
Campus

Kim Walsh, RPh, MBA

Director of Pharmacy Services,
Behavioral Health

Pharmacy Enterprise Infectious Diseases Collaborative

The RWJBarnabas Health Pharmacy Enterprise Infectious Diseases Collaborative is responsible for promoting the judicious use of antimicrobials throughout the health system to optimize patient outcomes and limit adverse effects. The collaborative garners consensus among content experts regarding design and implementation of strategies to improve antimicrobial use. Evidence-based medicine and rigorous literature evaluation drive the decision-making process. The collaborative supports the Clinical Pharmacy Council and coordinates with both system-wide and local multidisciplinary committees in order to fulfill its responsibilities.

Membership

Chair: Clinical Pharmacy Specialist, Antimicrobial Stewardship, Cooperman Barnabas Medical Center

Members: Corporate Director of Clinical Pharmacy Services, Corporate Director of Pharmacy Systems Integration and Clinical Pharmacy Specialists from Acute Care Service Line

Meetings

The Antimicrobial Stewardship Subcommittee shall meet quarterly or as otherwise deemed necessary by the chair

Duties and Responsibilities

- Serves as infectious disease pharmacotherapy subject matter experts by providing antimicrobial use recommendations to a variety of pharmacy and multidisciplinary committees at both the system and local levels
- Collaborates with Microbiology to enhance culture identification and antimicrobial susceptibility testing and reporting
- Refines the electronic medication ordering system in collaboration with Information Technology to facilitate appropriate antimicrobial selection, dosing and duration
- Advocates for antimicrobial stewardship throughout the continuum of care
- Develops educational materials regarding antimicrobial stewardship and antimicrobial resistance
- Provides recommendations to the Clinical Pharmacy Council regarding antimicrobial formulary decisions
- Designs, executes and reports antimicrobial stewardship quality improvement research
- Tracks and monitors antimicrobial stewardship outcome metrics
- Develops strategies to ensure compliance with antimicrobial stewardship regulatory requirements
- Serves as a representative on the system-wide Infectious Disease Multidisciplinary Collaborative



Steven Smoke, PharmD,
BCPS, BCIDP

Clinical Pharmacy Specialist,
Infectious Diseases/Antimicrobial
Stewardship, Cooperman
Barnabas Medical Center,
Chair of Infectious Diseases
Collaborative



Alexander Clark, PharmD

Clinical Specialist, Monmouth
Medical Center Southern
Campus



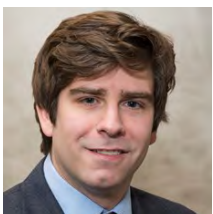
Elizabeth Stone,
PharmD, BCGP, AE-C

Antimicrobial Stewardship Clinical
Specialist, Newark Beth Israel
Medical Center



Gargi Patel, BS, PharmD

Infectious Disease Clinical
Specialist, Community
Medical Center



Henry Leach, PharmD,
BCPP

Clinical Coordinator, PGY2 Psychiatric
Residency Program Director, Behavioral
Health



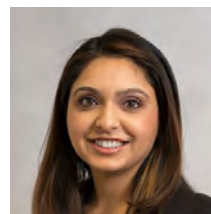
Jennifer Sternbach,
PharmD, BCPS, BCACP

Corporate Director of Clinical
Pharmacy Services



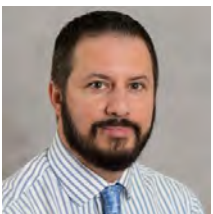
Karan Raja, PharmD,
BCIDP, BCPS

Clinical Pharmacy Specialist,
Infectious Disease, Clara Maass
Medical Center



Leena Kansagra,
PharmD, BCPS

Critical Care/Infectious Disease
Clinical Specialist, RWJ University
Hospital at Rahway



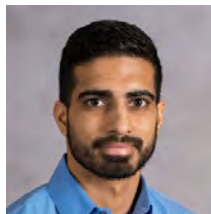
Luigi Brunetti, PharmD,
PhD, BCPS, BCGP

Clinical Pharmacist, Internal
Medicine, RWJ University Hospital at
Somerset, Clinical Associate
Professor, Internal Medicine, Ernest
Mario School of Pharmacy, Rutgers
University



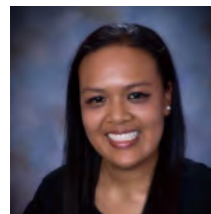
Monica Shah, PharmD

Antibiotic Stewardship Clinical
Specialist, Monmouth Medical
Center



Navaneeth Narayanan,
PharmD, MPH, BCIDP

Infectious Disease Specialist, RWJ
University Hospital at New
Brunswick, Clinical Assistant
Professor Ernest Mario School of
Pharmacy, Rutgers University



Nicole Leonida, PharmD,
BCPS

Infectious Diseases and Antimicrobial
Stewardship Clinical Pharmacy
Specialist, Jersey City Medical Center



Polly Jen, PharmD,
BCPS-AQ ID, AAHIVP

Assistant Director of Clinical
Services, Newark Beth Israel
Medical Center



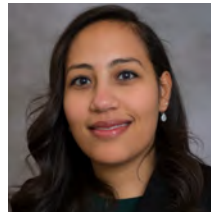
Priyanka Kelshikar,
PharmD, BCPS

Pharmacy Clinical Manager, RWJ
University Hospital at Rahway



Suzanne Caravella,
PharmD, BCPS, RPh

Clinical Coordinator, RWJ
University Hospital at Hamilton



Yasmine Elbaga,
PharmD, BCPS

Clinical Specialist, Monmouth
Medical Center Southern Campus

Pharmacy Enterprise Informatics Collaborative

The purpose of the RWJBarnabas Health Pharmacy Enterprise Informatics Collaborative is to standardize, translate and implement clinical and operational technology initiatives affecting medications throughout the healthcare system. The collaboration shares best practices and will bring forth pharmacy informatics recommendations to the applicable Councils for approval.

Mission Statement

To ensure that any medication-related technologies across the healthcare continuum are clinically, financially and operationally leveraged to current quality standards, clinical guidelines and regulations and optimized to improve patient care, population health outcomes and systems interoperability.

Membership

Chair: Corporate Director of Pharmacy Systems Integration

Members: Enterprise Clinical Information Systems (ECIS) Director of Pharmacy Informatics, ECIS Pharmacy Systems Analysts and Pharmacists, Assistant Director of Operations, IT Pharmacists/RN from the Acute Care Service Lines, Senior Pharmacy Reimbursement Specialist, Pharmacy Billing, Denials and Appeals Specialist, Corporate 340B Director and 340B Analysts.

Meetings

The Pharmacy Informatics Collaborative shall meet bi-monthly or as otherwise deemed necessary by the Chair, but not less than quarterly.

How We Accomplish Our Mission

The Pharmacy Informatics Collaborative accomplishes our objectives by leveraging automation and technology resources to support continuing compliance and patient safety. The resources include but are not limited to the enterprise clinical information systems (ECIS), smart infusion pump software, automated dispensing cabinets, clinical surveillance and documentation platforms, 340B software, financial, business intelligence and healthcare analytics reporting tools.

Duties and Responsibilities

- Proactively identifies operational efficiencies to fulfill our purpose and mission
- Optimizes automated dispensing cabinets and medication access functionality and inventory management
- Standardizes formulary and charge description master (CDM) request process for additions, deletions and changes
- Provides pharmacy informatics expertise and recommendations on existing and new technologies
- Develops and implements system-wide medication charge reconciliation initiatives



Ellen Secaras, MBA,
RPh

Corporate Director of Pharmacy
Systems Integration
Chair of Informatics
Collaborative



Alfredo Balleras, RPh

Lead Application Analyst, Epic
Willow, Enterprise Clinical
Information Systems



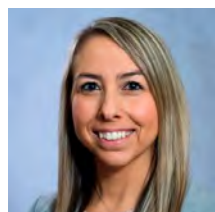
Angelina Bayruns, CPhT

340B Analyst, Corporate
Pharmacy



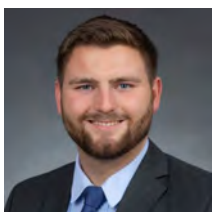
Barry MacNeil, RPh

Pharmacist, Enterprise Clinical
Information Systems,
RWJ University Hospital at
Hamilton



Berna Sweeney, CPhT

Senior Pharmacy
Reimbursement Specialist,
Corporate Pharmacy



Brian Bishop, PharmD,
BCPS

Pharmacy Systems Integration
Analyst, Newark Beth Israel Medical
Center



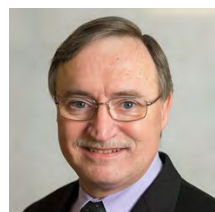
Bryan McCormick, CPhT,
MBA

Corporate Director 340B
Program, Corporate Pharmacy



Daniel Pung, PharmD

CIS Pharmacist, Enterprise Clinical
Information Systems



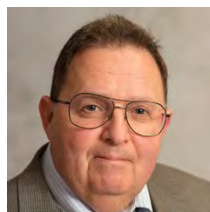
Edmund Manger, RPh,
MAS

Informatics Pharmacist, Clara Maass
Medical Center



Francisco Vila, PharmD,
CSP

Pharmacist, Qualitas Pharmacy
Services, Adjunct Clinical
Professor of Pharmacy Practice
at Fairleigh Dickinson University



Fred Penn, RPh

CIS Pharmacist, Enterprise
Clinical Information Systems



Fuwing Lee, RPh, MPA,
MSHI

Clinical Pharmacist Specialist,
Rutgers Cancer Institute of New
Jersey



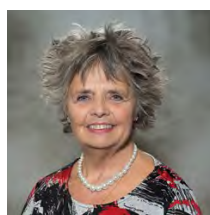
George Romanos, MBA

IT Specialist, Clara Maass
Medical Center



Larry Burnstein, BA

CIS Pharmacy Analyst,
Enterprise Clinical Information
Systems



Margaret Kosci, RN, MHA

Pharmacy Systems Analyst,
Behavioral Health and
Monmouth Medical Center
Southern Campus



Moises Junchaya,
PharmD

Pharmacy Systems
Administrator, RWJ University
Hospital at New Brunswick



Norah Mahoney,
PharmD, BCPS

Informatics Pharmacy Specialist,
Community Medical Center



Richard Hilway, RPh

Director of Pharmacy
Informatics, Enterprise Clinical
Information Systems



Sheryl Darville, PharmD

Information Technology
Pharmacist, Jersey City
Medical Center



Stephanie Wei, PharmD,
BCPS

Pharmacy Systems
Administrator, RWJ University
Hospital at Somerset



Steven DePaolo, RPh

Enterprise Clinical Information
Systems Pharmacist, RWJ
University Hospital at Rahway



Tammy Kupper, CPhT

340B Analyst, Corporate
Pharmacy



Todd Butala, PharmD

Assistant Director of Operations,
Monmouth Medical Center

Linda Allen, RPh

Senior Pharmacist IT, Cooperman
Barnabas Medical Center

Pharmacy Enterprise Medication Management Collaborative

The purpose of the RWJBarnabas Health Pharmacy Medication Management Collaborative is to create consistent, aligned Policy and Procedure documents across all facilities. These policies will be regulatory compliant as related to Department of Health, New Jersey Board of Pharmacy, the Joint Commission, DNV GL, Drug Enforcement Agency, Food and Drug Administration, Environmental Protection Agency and other local, state and federal agencies.

Membership

Members: Vice President of Qualitas Pharmacy Services, Directors of Pharmacy across the acute care service line, Children's Specialized Hospital, Barnabas Behavioral Health, CINJ, Qualitas and Corporate.

Duties and Responsibilities

- Investigate and identify opportunities for standardization of policies and procedures.
- Update, merge existing or create new documents to minimize policy and procedure variation across sites.
- Ensure policies and procedures meet current regulations and guidance.
- Ensure policies and procedures are designed to be successfully implemented and followed.



Sheetal Patel, PharmD,
BCPS

Director of Pharmacy Services,
RWJ University Hospital at
Rahway



Doug DeStefano,
PharmD

Corporate Director of Pharmacy
Operations



Gary Del Piano, PharmD

Director of Pharmacy Services,
Monmouth Medical Center
Southern Campus



Heather DeSanto,
PharmD, BCSCP

Director of Pharmacy Services,
Cooperman Barnabas Medical
Center



Maria DeVivo, PharmD,
MPA, BCPS, BCACP

Director of Pharmacy Services,
Jersey City Medical Center



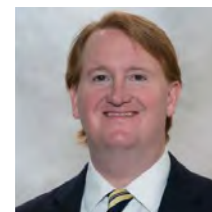
Lynne Goldstein, RPh,
MBA

Director of Pharmacy Services,
Community Medical Center



Michael P. Kane, RPh,
BCOP

Executive Director,
Oncology Pharmacy Services
Rutgers Cancer Institute of New
Jersey



Jonathan Margolin, MHA,
RPh, ACHE

Director of Pharmacy Services,
RWJ University Hospital at
Hamilton



Scott Mathis, PharmD

Regional Director of Pharmacy
Services, Monmouth Medical
Center Campuses



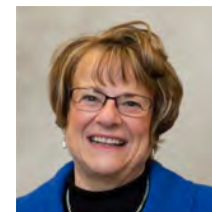
Mona Philips, RPh, MAS

Director of Pharmacy Services,
Clara Maass Medical Center



Sandra Richardson,
PharmD

Director of Pharmacy Services,
Newark Beth Israel Medical
Center



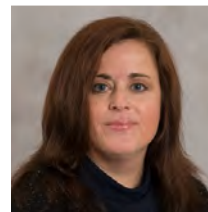
Suzanne Sesta, RPh,
BCSCP

Vice President of Qualitas
Pharmacy Services



Jodie Skayhan, PharmD

Administrative Director,
Pharmacy, RWJ University
Hospital at New Brunswick



Christine Tricarico,
PharmD, MBA

Director of Pharmacy Services,
Children's Specialized Hospital



Stuart Vigdor, BS Pharm,
RPh

Director of Pharmacy Services,
RWJ University Hospital at
Somerset



Kim Walsh, RPh

Director of Pharmacy
Operations, Behavioral Health

Pharmacy Enterprise Oncology Collaborative

Mission Statement

The mission of the Oncology Pharmacy Collaborative is to promote the most appropriate and cost-effective, evidence-based use and administration of chemotherapy, novel therapeutic agents, and other medical treatments or supportive care to ensure the highest quality and safety standards for patients undergoing care for cancer and cancer-related diseases.

Membership

Chair: Executive Director Oncology Pharmacy Services

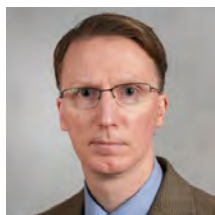
Members: Executive Vice President and Chief Pharmacy Officer, Corporate Director of Pharmacy Operations, Corporate Assistant Director of Clinical Pharmacy Services, IV Room Supervisors and Oncology Pharmacists from the Acute Care Service Line

Meetings

The Oncology Collaborative shall meet quarterly or as otherwise deemed necessary by the chair.

How We Accomplish Our Mission

The Oncology Pharmacy Collaborative is a subcommittee of The Oncology P&T Committee and the Director's Council. The Collaborative assists the Rutgers Cancer Institute as the oncology service line for RWJ Barnabas Health enterprise by evaluating the quality and safety of the delivery of pharmaceutical care to patients with the diagnosis of cancer or cancer-related diseases. It is a single-disciplinary committee that is responsible for the assigned process of medication formulary review and contributing to the development of policies, procedures, and guidelines for medication management of cancer-related therapies within Rutgers Cancer Institute and RWJ Barnabas. All collaborative meetings are confidential. All functions are directed by and reported back to the main The Oncology P&T Committee and the Director's Council.



Michael P. Kane, RPh,
BCOP

Executive Director,
Oncology Pharmacy Services
Rutgers Cancer Institute of New
Jersey (Chair)



Abiola Emmanuel, RPh

Lead Oncology Clinical Staff
Pharmacist, Newark Beth Israel
Medical Center



Angie Kang, PharmD

Specialty Oncology Clinical
Specialist, Newark Beth Israel
Medical Center



David Appel, PharmD

Pharmacy Operations Manager, RWJ
University Hospital at Hamilton



David Awad, PharmD,
BCOP

Pharmacy Specialist, Oncology,
RWJ University Hospital at New
Brunswick



Doug DeStefano,
PharmD

Corporate Director of Pharmacy
Operations (Co-chair)



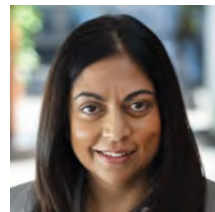
Elizabeth M. George,
PharmD, BCOP

Pharmacist, RWJ University
Hospital at New
Brunswick



Fuwing Lee, RPh, MPA,
MSHI

Clinical Pharmacist Specialist,
Rutgers Cancer Institute of New
Jersey



Indu Lew, PharmD

Executive Vice President and
Chief Pharmacy Officer



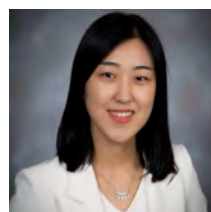
Jessica Hill, PharmD,
BCPS, BCACP, FASHP

Assistant Director of Clinical
Services, Corporate Pharmacy



Jigisha K. Patel, PharmD

Pharmacist, RWJ University
Hospital at New
Brunswick



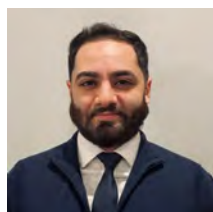
Jiyeon Park, PharmD,
BCOP

Clinical Pharmacist, Specialist-
Heme/BMT, Rutgers Cancer
Institute of New Jersey



Marcel Redhead,
PharmD

Sterile Products Supervisor, Newark
Beth Israel Medical Center



Muhammad Shahid,
PharmD

Pharmacy Supervisor- Sterile
Products, Jersey City
Medical Center



Simran Singh, PharmD,
BCPS

Sterile Products Supervisor,
Clara Maass Medical Center

Ashley Finamore, PharmD, BCOP
Clinical Pharmacist, Specialist, Rutgers
Cancer Institute of New Jersey

Christopher Groeger, PharmD, BCOP
Pharmacist Clinical Oncology, Cooperman
Barnabas Medical Center

Esther Huang, PharmD, BCOP, BCPS
Clinical Pharmacist, Specialist-Heme/BMT,
Rutgers Cancer Institute of New Jersey

Gabel Christian, PharmD
Pharmacist Manager, Investigational Drug
Services, Rutgers Cancer Institute of
New Jersey

Jonathan Lalli, PharmD, BCOP
Clinical Pharmacist, Specialist-Heme,
Rutgers Cancer Institute of New Jersey

Kathleen Tondo, PharmD
IV Supervisor, Monmouth Medical Center

Martin William Hesselbacher II, PharmD
Lead Pharmacist, Sterile Products
Supervisor, Monmouth Medical Center
Southern Campus

Paul Auriemma, PharmD, MBA, BCOP
Assistant Director Oncology Pharmacy
Services, Rutgers Cancer Institute of
New Jersey

Pharmacy Enterprise Pediatric Collaborative

The RWJBarnabas Health Pharmacy Enterprise Pediatric Collaborative aims to standardize, enhance and support pediatric pharmacy practice across the health system.

Mission Statement

To promote safe and effective medication use for every pediatric patient treated in the RWJBarnabas Health system.

Membership

Chair: Corporate Director of Clinical Pharmacy Services

Members: Clinical Leadership from the Acute Care Service Line, Pediatric Pharmacy Specialists from the Acute Care Service Line, and Clinical Pharmacy Specialists from the Acute Care Service Line

Meetings

The Pharmacy Pediatric Collaborative shall meet quarterly or as otherwise deemed necessary by the Chair.

How We Accomplish Our Mission

The Pharmacy Pediatric Collaborative accomplishes the mission by sharing the expertise of pediatric pharmacy specialists through the development of guidelines, protocols and educational materials for all sites in the system. The pediatric collaborative works with pediatric leadership, local pediatric departments, and other healthcare professionals to ensure that medication use is evidence-based and aligned with national quality indicators. They work to optimize the electronic medication ordering system to facilitate appropriate prescribing, preparation, dispensing, and administration of medications to pediatric patients across the health system. They serve as the pediatric pharmacotherapy subject matter experts by providing recommendations to a variety of pharmacy and multidisciplinary committees at both the system and local level, and advocate for the recognition of the patient-specific needs of the pediatric population. The Pediatric Collaborative is a subcommittee of the Clinical Pharmacy Council.



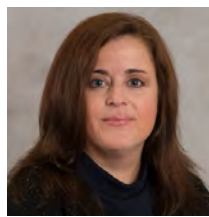
Jennifer Sternbach,
PharmD, BCPS, BCACP

Corporate Director of Clinical
Pharmacy Services
Chair of Pediatric Collaborative



Andrew Cho, PharmD

Pediatric Clinical Specialist,
Newark Beth Israel Medical
Center



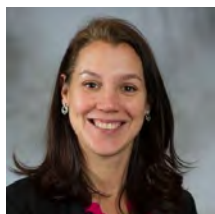
Christine Tricarico,
PharmD, MBA

Director of Pharmacy Services,
Children's Specialized Hospital



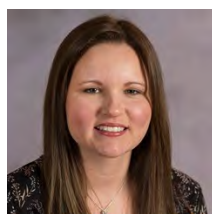
Hoytin Lee Ghin,
PharmD

Assistant Director of Clinical
Pharmacy Services, Monmouth
Medical Center



Jessica Lise, PharmD,
BCPS, BCPPS

Pediatric Pharmacy Specialist,
RWJ University Hospital at
New Brunswick



Karen Kisty, PharmD,
BCPS

Manager of Pharmacy Services,
Children's Specialized Hospital



Komal Nadeem,
PharmD, BCPS

Clinical Generalist, Clara Maass
Medical Center



Kwayke Acheampong,
PharmD

Pharmacy Operations
Supervisor, Newark Beth Israel
Medical Center



Mitesh M Patel, PharmD,
BCCCP

Clinical Coordinator, Pharmacy
PGY1 Residency Program Director,
Clara Maass Medical Center



Rachel Meyers, PharmD,
BCPS, BCPS

Rutgers Faculty and Pediatric
Clinical Specialist, Cooperman
Barnabas Medical Center



Sandy Moreau, PharmD,
BCPS

Clinical Coordinator, PGY1
Pharmacy Residency Program
Director, Jersey City Medical
Center

Pharmacy Enterprise Pharmacy Buyers Collaborative

Prescription drug costs, shortages, and access to medications continue to plague hospital and retail pharmacies. Often due to shortcomings in production quality assurance, scarcity of active pharmaceutical ingredient, or increased market utilization, medication shortages have disrupted pharmaceutical supply-chain workflow for over a decade. With limited relief on the horizon and generic manufacturers leaving the market due to narrow profitability, inventory management is of paramount concern for pharmacies. In an effort to mitigate provider or patient impact, RWJBH Pharmacy Buyers have employed best in class buying practices through systematic purchasing processes and enhanced communication.

Membership

Chair: Corporate Director 340B Program

Members: Corporate Vice President of Integrated Pharmacy Services, Pharmacy Buyers, System Director Pharmaceutical Procurement, Clinical Distribution Manager, 340B Analyst

Meetings

The Pharmacy Buyers Collaborative meets virtually on a monthly basis

Collaborative Purpose

The Pharmacy Buyers Collaborative initiated in 2017 as a semi-annual meeting for all RWJBarnabas Health pharmaceutical procurement stakeholders. Corporate Pharmacy identified value in facilitating increased communication and collaboration between key stakeholders within the health system. Therefore, to supplement annual meetings and other pharmacy enterprise collaborative efforts, the collaborative added brief monthly calls to address high-ticket items.

The collaborative continued its execution of a centralized hub for high dollar, high volume, shorted, and unique medications through RWJBH Consolidated Pharmacy Services. Continuing its goal for 2022, the collaborative remains resolute in maintaining lean, cost effective inventory processes while ensuring pharmaceutical supply chain interruptions do not clinically affect RWJBarnabas Health patients. Additionally, the collaborative will continue to execute its focused centralization mission, while anticipating the introduction of additional facilities to RWJBarnabas Health.



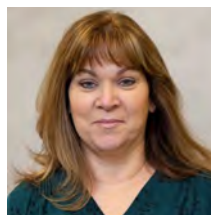
**Bryan McCormick, CPhT,
MBA**

Corporate Director 340B
Program, Corporate Pharmacy
Chair of Pharmacy Buyers
Collaborative



Angelina Bayruns, CPhT

340B Analyst, Corporate
Pharmacy



Barbara Sanders

Pharmacy Buyer, Clara Maass
Medical Center



Cindy Cragle

Pharmacy Inventory Analyst,
RWJ University Hospital at
Somerset



Eliana Solis, CPhT

Pharmacy Technician,
Cooperman Barnabas Medical
Center



Elizabeth Posada, CPhT

340B Program Coordinator/Pharmacy
Buyer, RWJ University Hospital at
New Brunswick



Fernando Oliveira

System Director of Pharmaceutical
Procurement, Emergency
Management Coordinator, Qualitas
Pharmacy Services



George Romanos, MBA

IT Specialist, Clara Maass
Medical Center



Jessica Aurisano

Pharmacy Buyer, Community Medical
Center



Joanna King, CPHT

Pharmacy Inventory Control
Specialist, Newark Beth Israel
Medical Center



Kathy Stocker, CPhT

Pharmacy Buyer, RWJ
University Hospital at Hamilton



**Kimberly Parris-Rock,
CPhT**

Purchasing Coordinator,
Cooperman Barnabas Medical
Center



Lisa Freid

Pharmacy Technician
Coordinator, Clara Maass
Medical Center



Lori Gonzalez, CPhT

Pharmacy Buyer, RWJ
University Hospital at Rahway



Luchi Doyle

Pharmacy Buyer, Monmouth
Medical Center Southern
Campus



**Robert Pellechio, RPh,
MPA**

Corporate Vice President of
Integrated Pharmacy Services



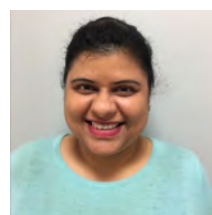
Robin Henson, CPhT

Pharmacy Buyer, Monmouth
Medical Center



Tammy Kupper, CPhT

340B Analyst, Corporate
Pharmacy



Teaka Singh, CPhT

340B Coordinator, Pharmacy
Buyer, Jersey City Medical
Center

Barrington McDermott, CPhT
Inventory Technician,
Newark Beth Israel Medical Center

Colleen McLaughlin, CPhT
Monmouth Medical Center Southern Campus

Pharmacy Enterprise Procurement Collaborative

The RWJBH Pharmacy Enterprise Procurement Collaborative promotes pharmaceutical supply chain efficiency and standardization in an effort to support positive patient outcomes through optimal medication availability. Stabilizing and preserving consistent supply chain operations results in a minimum of inventory disruptions.

The collaborative will utilize the experience of internal and external sources to create and implement processes which support the RWJBH Corporate Pharmacy Directors Council. In addition, the collaborative will coordinate efforts with multidisciplinary committees at both the health-system and local levels to realize its goals. To maintain service levels and mitigate limited supply concerns, the collaborative will facilitate the requisitioning, ordering, approving, receiving and payment of products with the added intent of alleviating supplemental expenses outside of usual-and-customary ordering practice and exploring other cost savings initiatives.

Membership

Chair: System Director of Pharmaceutical Procurement

Members: Corporate Vice President of Integrated Services, Directors and Assistant Directors of Pharmacy across the acute care service line, Qualitas and Corporate.

Duties and Responsibilities

- Serve as the pharmaceutical supply chain subject matter experts, advising a variety of pharmacy and multidisciplinary committees within RWJBH.
- Collaborate with Directors of Pharmacy, Pharmacy Buyers, Corporate Purchasing, and Finance Departments to establish efficient, reliable and cost effective processes for pharmaceutical procurement.
- Develop and maintain educational material and policies regarding procurement processes.
- Guide local Pharmacy Department leadership to maximize supply and minimize expenses.
- Leverage relationships with Pharmaceutical Manufacturers and Wholesalers regarding supply updates, product allocations, delivery estimates, and expense/cost initiatives.
- Work in parallel with the Corporate Pharmacy Clinical Council regarding pharmaceutical formulary selections.



Fernando Oliveira

System Director of Pharmaceutical
Procurement, Qualitas Pharmacy
Services, Chair of Procurement
Collaborative



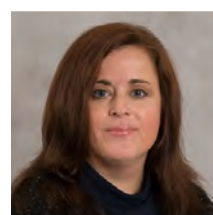
Robert Pellechio, RPh,
MPA

Corporate Vice President of
Integrated Pharmacy Services



Bryan McCormick, CPhT,
MBA

Corporate Director 340B
Program



Christine Tricarico,
PharmD, MBA

Director of Pharmacy Services,
Children's Specialized Hospital



Doug DeStefano,
PharmD

Corporate Director of Pharmacy
Operations



Ellen Secaras, MBA,
RPh

Corporate Director of Pharmacy
Systems Integration



Jodie Skayhan, PharmD

Administrative Director,
Pharmacy, RWJ University
Hospital at New Brunswick



Lynne Goldstein, RPh,
MBA

Director of Pharmacy Services,
Community Medical Center



Suzanne Sesta, RPh,
BCSCP

Vice President of Qualitas
Pharmacy Services



Todd Butala, PharmD

Assistant Director of Operations,
Monmouth Medical Center

Pharmacy Enterprise Psychiatric Collaborative

The RWJBarnabas Health Pharmacy Enterprise Psychiatric Pharmacy Collaborative is responsible for ensuring the continuum of care for psychiatric patients throughout our network. The collaborative consists of neuropsychiatric pharmacy specialists who take pride in enhancing medication management including the standardization of order sets and formulary considerations as means to promote medication safety and quality patient care. In addition to medication management, the collaborative takes special interest in promoting resident education and networking opportunities within our network.

Membership

Chair: Clinical Coordinator, PGY2 Psychiatric Residency Program Director, Barnabas Behavioral Health

Members: Clinical Neuropsychiatric Pharmacy Specialist, Clinical Pharmacy Specialist, Psychiatric Clinical Pharmacist

Meetings

The Psychiatric Pharmacy Collaborative shall meet quarterly or as otherwise deemed necessary by the chair

Duties and Responsibilities

- Serve as subject matter experts in psychiatric pharmacotherapy by providing recommendations to a variety of pharmacy and multidisciplinary committees at both the system and local levels.
- Standardize psychiatric pharmacotherapy across the enterprise.
- Assist in order set creation and review based on best evidence for our electronic health record.
- Review and make recommendations for policies and procedures relating to mental health across the enterprise.
- Provides recommendations to the Clinical Pharmacy Council regarding new therapies in mental health.
- Develop and execute research and quality improvement projects in psychiatry.
- Develop and standardize strategies related to psychiatric medications and regulatory requirements.
- Promote and share educational opportunities for pharmacy residents across the enterprise.



Henry Leach, PharmD,
BCPP

Clinical Coordinator, PGY2
Psychiatric Residency Program
Director, Behavioral Health Chair of
Psychiatric Collaborative



Leo Batongbakal,
PharmD, BCPP

Psychiatry Clinical Pharmacy
Specialist, Jersey City Medical
Center



Jessica Hill, PharmD,
BCPS, BCACP, FASHP

Assistant Director of Clinical Services,
Corporate Pharmacy



Nicole Daniel, PharmD,
BCPP

Clinical Neuropsychiatric Pharmacy
Specialist, Clara Maass Medical
Center



Nicole Ryba, PharmD,
BCPP, BCGP

Clinical Pharmacy Specialist,
Community Medical Center, Clinical
Assistant Professor, Fairleigh Dickinson
University



Megan Maroney,
PharmD, BCPP

Clinical Psychiatric Pharmacist,
Monmouth Medical Center, Clinical
Associate Professor, Ernest Mario
School of Pharmacy, Rutgers

Pharmacy Residency Ambassadors Collaborative

The purpose of the RWJBarnabas Health Residency Ambassadors is to promote the RWJBarnabas Health pharmacy residency programs through various marketing channels including residency showcases and social media.

The mission of the Residency Ambassador is to demonstrate and embody the culture of our organization and introduce prospective residents to our philosophy from the first encounter.

Who We Are

The Residency Ambassadors are a group of passionate teammates who have trained in our system and chose to remain or return to the enterprise for their career. They come from diverse backgrounds and have demonstrated exceptional communication and leadership skills.

How We Accomplish Our Mission


The Ambassadors are able to meet their mission through a variety of creative techniques including webinars, social media postings, outreach and physical representation at residency showcases. Their ability to match a prospective candidate with the facilities that would best fit their needs allows for enhanced recruitment.


Duties and Responsibilities

The Residency Ambassadors work to promote the RWJBarnabas Health Enterprise through:

- Facilitate presentations and information tables at career, college and residency showcases
- Coordination of the annual RWJBarnabas Health Residency Annual Report
- Develop content for the enterprise social media accounts: Facebook, Twitter, LinkedIn and Instagram
- Serve as role models and leaders for current and prospective residents
- Participate in special events as needed including webinars and community outreach
- Manage and update the Pharmacy Enterprise website
- Create and implement unique marketing material tailored to attracting high caliber candidates

 facebook.com/rwjbhpharmacy

 @rwjbhpharmacy

 @rwjbhpharmacy



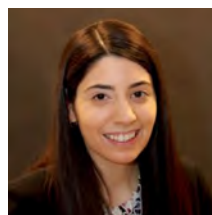
Alyssa Gallipani,
PharmD, BCACP

Ambulatory Care Clinical Specialist,
Corporate Pharmacy PGY2 Ambulatory
Care Residency Program Director,
Clinical Assistant Professor, Fairleigh
Dickinson University



Angela Antonello,
PharmD, BCPS

Emergency Medicine Clinical
Pharmacist Specialist, Cooperman
Barnabas Medical Center



Dana Sero, PharmD,
BCPS

Emergency Medicine Clinical
Decentralized Pharmacist,
Newark Beth Israel Medical Center



Jessica Bente, PharmD,
BCPS, BCGP

Clinical Specialist, Geriatrics,
PGY2 Geriatrics Residency
Program Director, Cooperman
Barnabas Medical Center



Kayla Torpey, PharmD,
BCPS

Internal Medicine Clinical Specialist,
Residency Program Coordinator,
Residency Ambassador, Newark Beth
Israel Medical Center



Kristine Sobolewski,
PharmD, BCPS

Clinical Specialist, Emergency
Medicine, Cooperman
Barnabas Medical Center



Morgan Esordi, PharmD,
BCPS

Staff Clinical Pharmacist,
RWJ University Hospital at
Rahway



Nicole Leonida, PharmD,
BCPS

Infectious Diseases and Antimicrobial
Stewardship Clinical Pharmacy
Specialist, Jersey City Medical Center



Rahul Jacob, PharmD,
BCACP

Ambulatory Care Clinical Specialist,
Corporate Pharmacy

Pharmacy Enterprise Sterile Products Collaborative

The Pharmacy Enterprise Sterile Products Collaborative is responsible for maintaining compliance in both USP 797 and USP 800 federal regulations which govern compounding of all sterile products.

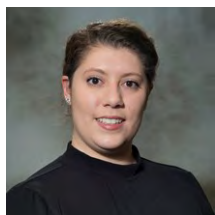
Membership

Chair: Sterile Products Supervisor, Community Medical Center

Members: Vice President of Qualitas Pharmacy Services, Director of Pharmacy Qualitas Pharmacy Services and RWJ University Hospital at Hamilton, IV Technician Manager Qualitas Pharmacy Services, and Sterile Products / IV Room Supervisors from the Acute Care Service Line, Director of Oncology Pharmacy Services and Research Pharmacy Shared Resource Rutgers Cancer Institute of New Jersey

Duties and Responsibilities

- Renovating all clean rooms and areas where sterile compounding takes place in each facility to meet new USP 797 and 800 regulations
- Standardizing the maintenance of clean rooms, including the equipment and cleaning products used
- Standardizing the competency of employees that will work in the compounding of sterile products
- Standardization of policies for compounding, cleaning, and maintenance of the clean rooms or areas
- Guide decisions on what products to centralize the compounding at Qualitas Pharmacy Services



Anne Ficalora, PharmD,
BCSCP

Sterile Products Supervisor,
Community Medical Center
Chair of Sterile Products
Collaborative



Anita McNeill, RPh,
BCSCP

Director of Pharmacy, Qualitas
Pharmacy Services



Anne Hameed, CPhT,
CSPT

Sterile Products Supervisor,
RWJ University Hospital at
Hamilton



David Appel, PharmD

Pharmacy Operations Manager, RWJ
University Hospital at Hamilton



Dehali Banyopadhyay,
PharmD, MS

Assistant Director of Operations,
Newark Beth Israel Medical
Center



Doug DeStefano,
PharmD

Corporate Director of Pharmacy
Operations



Marcel Redhead,
PharmD

Sterile Products Supervisor,
Newark Beth Israel Medical
Center



Matthew Levanda, MBA,
RPh, BCSCP

Sterile Products Supervisor,
RWJ University Hospital at
Somerset



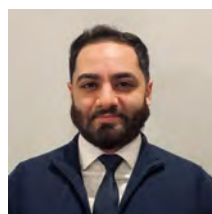
Melissa Thornhill, CPhT

Sterile Products Supervisor,
RWJ University Hospital at New
Brunswick



Michael P. Kane, RPh,
BCOP

Executive Director,
Oncology Pharmacy Services,
Rutgers Cancer Institute of New
Jersey



Muhammad Shahid,
PharmD

Pharmacy Infusion Center
Supervisor, Jersey City Medical
Center



Olubunmi Afolabi,
PharmD, BCSCP

Sterile Products Supervisor,
Cooperman Barnabas Medical
Center



Sheetal Patel,
PharmD, BCPS

Director of Pharmacy Services,
RWJ University Hospital at
Rahway



Simran Singh, PharmD,
BCPS

Sterile Products Supervisor,
Clara Maass Medical Center



Suzanne Sesta, RPh,
BCSCP

Vice President of Qualitas
Pharmacy Services



Tiffany Cheng, PharmD

Sterile Products Supervisor,
Jersey City Medical Center



Todd Butala, PharmD

Assistant Director of Operations,
Monmouth Medical Center

Kathleen Tondo, PharmD

IV Supervisor, Monmouth Medical Center

Martin William Hesselbacher II, PharmD

Lead Pharmacist, Sterile Products Supervisor,
Monmouth Medical Center Southern
Campus

Mary Milad, PharmD

Staff Pharmacist, Rutgers Cancer Institute of New
Jersey

Nakia Kandas, R.Ph

IV Supervisor, Qualitas Pharmacy Services



Pharmacy Enterprise Divisions

The RWJBarnabas Health Pharmacy Enterprise is
Composed of Two Service Lines:
Acute Care Service and **Integrated Service**

**The Acute Care Service Line is
comprised of 13 pharmacy divisions:**

Barnabas Health Behavioral Health Center
Children's Specialized Hospital
Clara Maass Medical Center
Community Medical Center
Cooperman Barnabas Medical Center
Jersey City Medical Center
Monmouth Medical Center
Monmouth Medical Center Southern Campus
Newark Beth Israel Medical Center
RWJ University Hospital at Hamilton
RWJ University Hospital at New Brunswick
RWJ University Hospital at Rahway
RWJ University Hospital at Somerset

**The Integrated Service Line is comprised of 12
pharmacy divisions:**

340B Drug Pricing Program
Ambulatory Care Division
Corporate Pharmacy Division
Pharmacy Informatics Division
Pharmacy Reimbursement Division
Qualitas Home Infusion Care Division
Qualitas LSC Mail Order Pharmacy Division
Qualitas Specialty Pharmacy Division
Qualitas Centralized Warehouse Division
Retail Pharmacy Network Division
Rutgers Cancer Institute of New Jersey
RWJBarnabas Consolidated Pharmacy Services
Division

Acute Care Service Line

Barnabas Health Behavioral Health Center | RWJBarnabas HEALTH

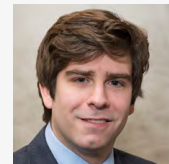
The RWJBarnabas Health Behavioral Health Center is a free-standing 100 bed acute care psychiatric facility which provides inpatient and intensive outpatient programs for adults and older adults diagnosed with psychiatric and dual diagnosis disorders. We are committed to serving our patients and providing a high level of care for our patients.

The pharmacy is located centrally in the building and is a pillar of providing medications, research, drug information, and clinical support for complex cases. The Barnabas Health Behavioral Health Center utilizes computerized physician order entry (CPOE), automated dispensing cabinets (ADC), and barcode medication administration (BCMA). These IT solutions allow the pharmacy to operate at high efficiency, enabling pharmacists to focus on clinical aspects of patient's treatment.

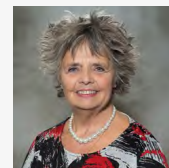
One unique aspect of the RWJBarnabas Health Behavioral Health Center is that our prescribers are hired by our hospital, allowing the pharmacy to collaborate closely with our psychiatrists and advanced practice nurses. Our pharmacists are relied upon by all disciplines throughout our facility and are a frequently called upon to assist in problem solving. Our pharmacists participate in patient rounds and multi-disciplinary treatment teams throughout the week. The clinical activities our pharmacists perform include: pain consultations, anticoagulation monitoring and dosing, monitoring of all drug levels, medication reconciliation, medication education through inpatient and outpatient groups, diabetes education to inpatients and outpatients, pharmacogenetic analysis, and antimicrobial drug monitoring.

The pharmacy is staffed by 3 full time pharmacists, 2 part time pharmacists and 1 full time technician during daytime hours and is operating until midnight by 1 full time pharmacist. The pharmacy at RWJBarnabas Health Behavioral Health Center precepts over 20 students per year and is currently in candidate status for an ASHP accredited PGY2 psychiatric residency.

Kim Walsh, RPh, MBA
Director of Pharmacy
Operations



Henry Leach, PharmD, BCPP
Clinical Coordinator, PGY2
Psychiatric Residency
Program Director



Margaret Kosc, RN, MHA
Pharmacy Systems
Analyst, Behavioral Health
and Monmouth Medical
Center Southern Campus

Acute Care Service Line

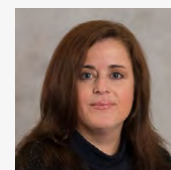


For over 125 years, Children's Specialized Hospital has been the nation's leading provider of inpatient and outpatient care for children from birth to 21 years of age facing special health challenges – from chronic illnesses and complex physical disabilities like brain and spinal cord injuries, to a full scope of developmental, behavioral, and mental health concerns.

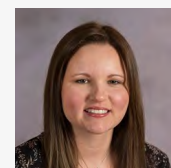
Our pharmacy team consists of 27 employees spread across two pharmacy departments. The Acute Rehabilitation hospital location in New Brunswick is our central location, with another pharmacy located in the Mountainside facility that services our two Pediatric Long Term Care residential facilities. These pediatric pharmacists are fluent in pediatric dosing of all medications, and utilize the most recent evidence-based literature to support pediatric medication use. Not only do they verify medication orders for the patients in the three facilities, they work closely with the prescribers to complete medication reconciliation on all patients being admitted from home or from sending facilities.

Pharmacists also provide anticoagulation monitoring and dosage recommendations as well as pharmacokinetic consults. Our pharmacy team is extremely focused on patient safety, and is involved in daily compounding and dispensing of solid and liquid medications in their most ready to use form for our smallest and youngest of patients. The pharmacy team also supports the nursing staff in their safe administration of these medications by providing a comprehensive medication profile for each patient and works closely with our nurses to determine medication administration times appropriate for their patients' therapy and daily activity schedule. Discharge counseling is provided to each family to ensure the safe transition to home with regard to their medication regimen.

Our pharmacists are integral members of the patient's clinical team and are very involved with providing clinical interventions centered on Antimicrobial Stewardship, Neonatal Abstinence Syndrome, Chronic Pain Management and TPN/Nutrition related administration. We precept students from the Ernest Mario School of Pharmacy at Rutgers University every month, and are honored to have seven student technicians working in order to enhance their didactic training with on the job learning at our hospitals. At 15 individual New Jersey inpatient and outpatient locations, our pediatric specialists partner with families so that all children can reach their full potential.



Christine Tricarico,
PharmD, MBA
Director of Pharmacy
Services



Karen Kisty, PharmD,
BCPS
Manager of Pharmacy
Services

Acute Care Service Line

Clara Maass Medical Center



Clara Maass Medical Center is a 472-bed community medical center located in Belleville, NJ. The mission of Clara Maass is to provide exceptional services and quality to its community, through its passion for excellence and perfection. Clara Maass Centers and Services include: the Women's Health Center, Nuclear Medicine, the Cancer Center at Clara Maass, Diagnostic Cardiac Services including Cardiac Catheterization, Emergency Angioplasty and Rehabilitation, the Pain Management Center, the Joint and Spine Institute, a Vascular Center, Same Day Surgery, the Wound Care Center at Clara Maass, the Center for Sleep Disorders, the Bariatric Surgery Center, Rehabilitation Services, Comprehensive Ophthalmology Services, Maternity Services and Parent Education, Radiology Services, Pediatrics, a state-of-the-art Emergency Department and Intensive Care unit, and community outreach programs. The CMMC Department of Pharmacy continues to support the mission of Clara Maass Medical Center and the community it serves.

The pharmacy department employs more than 60 pharmacists and technicians who provide care in the inpatient and outpatient settings by utilizing a decentralized pharmacy model. The centralized pharmacists serve as a resource to our medical and nursing staff, verify medication orders and products dispensed, oversee technician activities, and compound parenteral admixtures. Decentralized pharmacists are stationed in the medical intensive care unit, emergency department, and telemetry units. They participate in daily rounds, provide medication education, perform patient counseling, and participate in medical emergencies. Pharmacy technicians work alongside pharmacists to ensure safe preparation and delivery of sterile and non-sterile products. The department performs a variety of clinical services, including anticoagulation management, pharmacokinetic-pharmacodynamic monitoring, and antimicrobial stewardship. The pharmacy department employs clinical specialists who provide services in Critical Care, Emergency Medicine, Internal Medicine, Infectious Disease, Cardiology, and Behavioral Health. All pharmacy clinical specialists hold board certifications in their respective practice areas.

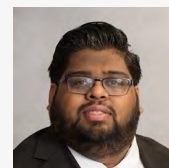
The pharmacy department supports hospital services in the areas of pediatrics, critical care, adult medicine, emergency medicine, infectious disease, cardiology, orthopedic surgery, general surgery, hospice, telemetry, and oncology. The department is involved in several interdisciplinary committees including the Pharmacy and Therapeutics Committee, Quality and Safety Council, Performance Improvement Council, Falls Committee, Pain Committee, and many others. Pharmacy works collaboratively with the transitions of care teams to better serve those with congestive heart failure, acute myocardial infarction, and chronic obstructive pulmonary disease.

CMMC Pharmacy places high emphasis on education and research. The department has numerous publications in peer-reviewed journals, and research has been presented locally, regionally, nationally, and internationally. Members of the pharmacy team hold educational sessions for nursing and medical staff. Clinical specialists continue to serve as preceptors for pharmacy students from the Ernest Mario School of Pharmacy, Fairleigh Dickinson University, and Philadelphia College of Pharmacy. The pharmacy department has maintained an ASHP accredited PGY1 residency program since 2007, which has expanded to two PGY1 resident positions.

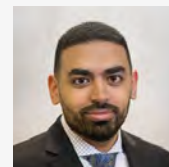
CMMC Pharmacy department will continue to provide safe, high quality care, in an atmosphere of professionalism and respect, for the betterment of our patients and community.



Mona Philips, RPh, MAS
Director of Pharmacy
Services



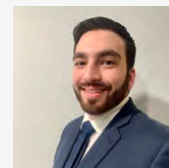
Mitesh M Patel, PharmD, BCCCP
Clinical Coordinator,
Pharmacy PGY1
Residency Program
Director



Mark Attalla, PharmD, MBA
Pharmacy Operations
Supervisor



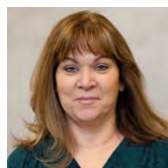
Simran Singh, PharmD, BCPS
Sterile Products
Supervisor



George Romanos, MBA
IT Specialist



Lisa Freid
Pharmacy Technician
Coordinator



Barbara Sanders
Pharmacy Buyer

Acute Care Service Line

Community Medical Center | RWJBarnabas HEALTH

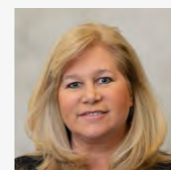
Since 1961, Community Medical Center (CMC) has provided care to the residents of Ocean County, and has grown into the largest and most active health care facility in the county. CMC is a 528 bed fully accredited medical center that is dedicated to advancing the quality of life and health of the community. Community Medical Center offer comprehensive services, including cancer care at the J. Phillip Citta Regional Cancer Center, wound care at The Center for Wound Care and Hyperbaric Medicine, neurology and neurosurgery services, cardiac care and catheterization on and off-site, surgical services, outpatient dialysis, obstetric, pediatric and outpatient infusion services. Advanced care is provided at the Center for Sleep Disorders, the Center for Diabetes Education and the Women's Imaging Center. CMC also supports a 25 bed on-site, acute rehabilitation center, a 100 bed Emergency Department and many community outreach programs.

Our team of more than 83 pharmacists and technicians provides services 24 hours a day, 7 days a week through a hybrid-decentralized model, a surgical Pharmacy satellite and Outpatient Infusion Pharmacy complex. Clinical Generalists provide decentralized clinical services and perform centralized clinical and operational activities. Pharmacy services are provided using technology including computerized physician order entry (CPOE), barcode medication administration (BCMA), automated dispensing cabinets (ADC) and inventory carousel storage. Clinical Generalists provide clinical order and lab review, patient counseling, medication dosing and drug information, as well as dispensing and sterile compounding services. Technicians and pharmacists work together to support efficient and effective patient care.

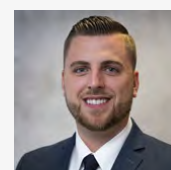
Community Medical Center has 6 Clinical Specialists who hold multiple board certifications in their respective practice areas. Specialists include 1 in Critical Care, 1 in Infectious Disease and 2 in Emergency Medicine. CMC has two Clinical Faculty from Fairleigh Dickinson University School of Pharmacy and Health Sciences, who specialize in Critical Care, Internal Medicine and Geriatrics and are members of the Pharmacy Specialist team. The Clinical Specialists participate in daily patient interdisciplinary rounds in their respective areas, provide evidence based medication recommendations, provide education to the interdisciplinary care team and participate in patient counseling. The medical center also has a Transitions of Care (TOC) Clinical Pharmacy Specialist who works closely with the TOC Nursing team to ensure accurate and appropriate medication therapy management during care transitions when patients are admitted to and discharged from CMC.

Dedication to the profession is shown through the student preceptor program with Ernest Mario School of Pharmacy at Rutgers University and Fairleigh Dickinson University School of Pharmacy and Health Sciences, as well as through our on-site pharmacy residency programs. CMC is proud to have achieved an eight-year ASHP accredited residency program for two PGY-1 Pharmacy Residents as well as an eight-year ASHP accredited PGY-2 Critical Care Pharmacy Residency program. Continuous learning and improvement for the entire staff is a core principle of the department. Team members provide presentations at the local, state, national and international levels and routinely publish original research in peer-reviewed journals. The Pharmacy Department leads investigational studies and provides education for the nursing and medical staff. The Pharmacy Department also participates in many community outreach programs including COVID-19 Vaccination clinics, flu clinics, high school outreach programs and Habitat for Humanity.

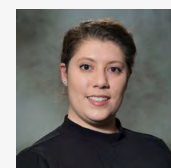
The Pharmacy Department is committed to providing safe, effective and cost-conscious service as we support the mission of our medical center in caring for the community we serve. We are equally dedicated to advancing the Pharmacy profession and elevating our team members to their fullest potential while striving to meet CMC's and RWJBarnabas Health System's mission, vision and values.



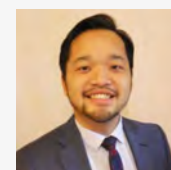
Lynne Goldstein, RPh, MBA
Director of Pharmacy Services



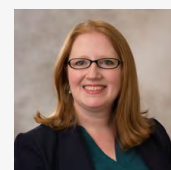
Joseph Cavanaugh, PharmD, BCPS, BCCCP
Assistant Director of Pharmacy Services, PGY1 Program Residency Director



Anne Ficalora, PharmD, BCSCP
Sterile Products Supervisor



Daniel Fung, PharmD
Pharmacy Operations Supervisor



Norah Mahoney, PharmD, BCPS
Informatics Pharmacy Specialist

Acute Care Service Line

Cooperman Barnabas Medical Center | RWJBarnabas HEALTH

Serving over 32,000 inpatients, 97,000 adult and pediatric Emergency Department patients, and 300,000 outpatients annually, our mission is to provide compassionate care, health care excellence, and superior service to our patients and their families. Cooperman Barnabas Medical Center (CBMC), by virtue of business and clinical excellence, received the Mid-Atlantic Alliance for Performance Excellence (MAAPE) state level Baldrige award in 2017. CBMC also achieved Magnet status in 2018.

Working in conjunction with our teaching and medical staff of more than 1,700 physicians and dentists, our vision is to advance the health and quality of life in our community. We demonstrate our values of exceptional communication, outstanding teamwork, professional integrity, and accountability while serving our patients, community, and each other.

The pharmacy department consists of 111 employees and 85 FTEs providing decentralized pharmacy services. The decentralized model is supported by computerized prescriber order entry (CPOE), automated dispensing cabinets (ADC) on the units, and bed-side barcode medication administration. Decentralized clinical-staff pharmacists, in areas of perioperative, neonatal intensive care, outpatient oncology, and all other inpatient care areas, perform order verification from the area they are assigned to, provide direct patient education and also participate in multidisciplinary patient rounds. Pharmacist activities are supported by Board of Pharmacy registered pharmacy technicians, all holding additional certifications from institutions such as the Pharmacy Technician Certification Board. In the central pharmacy, the technicians assist pharmacists by answering phones, filling labels, compounding sterile and non-sterile medications, and performing deliveries. Medication admission reconciliation technicians work in the Emergency Department and interact directly with patients, families, retail pharmacies and other health care facilities to ensure medication histories are accurate and up-to-date.

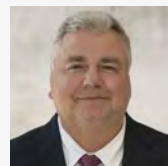
The pharmacy has eleven clinical specialists who provide additional support and serve as resources to pharmacy, nurses, physicians and patients. These clinical specialists practice in Ambulatory Care, Antimicrobial Stewardship, Critical Care, Emergency Medicine, Geriatrics, Perioperative Services and Renal Transplant, which has three focused specialists. In addition the department has two Ernest Mario School of Pharmacy - Rutgers University Faculty, who specialize in pediatrics and cardiology. Currently, 20 pharmacists have attained Specialty Board Certifications. The cardiology pharmacist has been selected by the Heart Failure Society of America to sit on the Advocacy Committee for the National Heart Failure Organization, named an Associate of the American College of Cardiology, and recognized as a Fellow of the Heart Failure Society of America. The pediatric pharmacist was also honored with a Presidential Citation from the Pediatric Pharmacy Advocacy Group and recognized by the Institute of Safe Medication Practice with the 2021 Cheers Award for on the KIDs List. Between faculty and clinical staff pharmacists, the department precepts over 70 students per year and serves as a Rutgers Knight Scholar site. In addition to the clinical specialists, the department has an ASHP-accredited pharmacy residency program with four PGY1 pharmacy practice residents and one PGY2 ASHP-accredited Geriatric pharmacy residency program with a focus on ambulatory and transitions of care.

Other hospital services supported by the pharmacy department include pediatrics, neonatal, critical care, gynecology/maternity, NJ's only certified burn intensive care unit and step down, renal transplant, emergency medicine, general medicine, cardiology, neurology, neurosurgery, orthopedic surgery, general surgery, geriatrics, wound care, cyber knife and oncology.

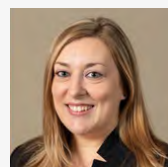
As education and research are continually in focus, in 2021 pharmacy personnel contributed 8 published journal articles, 15 local education/poster presentations to nursing, physicians and pharmacists, 22 national/state level presentations/posters, 19 posters from more than 20 pharmacists at the 2nd CBMC Pharmacy Research week, 102 community outreach events and 4 staff members attended Global Health Outreach. Pharmacists involved in clinical research trials supported 20 open enrollment studies for MS, pediatrics, ED, COVID-19 and renal transplant and 39 for oncology.



Heather DeSanto, PharmD, BCSCP
Director of Pharmacy Services



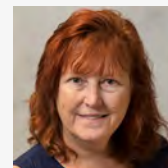
John Hoffman, PharmD
Assistant Director Pharmacy Services



Alison Brophy, PharmD, BCPS, BCCCP
Assistant Director, Pharmacy Clinical Services, PGY1 Residency Program Director



Olubunmi Afolabi, PharmD, BCSCP
Sterile Products Supervisor



Susan Davanzo, RPh, MPA
Medication Safety Supervisor



Mindy Wilinsky, RPh
Operations Supervisor



Kimberly Parris-Rock, CPhT
Purchasing Coordinator

Linda Allen, RPh
IT systems Pharmacist

Acute Care Service Line

Jersey City Medical Center



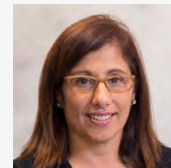
Since 1882, Jersey City Medical Center (JCMC) has provided Hudson County with state of the art medical treatment across a broad range of disciplines and is the area's only teaching hospital. The Medical Center operates based on the pillars of Patient Safety, Patient Satisfaction, Clinical Quality and Economic Health. The Pharmacy Department supports the mission of "Enhancing Life" to the people and communities we serve.

The Pharmacy Department uses a state of the art electronic clinical information system to ensure a safe medication process. The system allows for computerized prescriber order entry (CPOE), guidance from evidence-based order sets as well as bedside barcode medication administration (BCMA). Medication distribution is optimized by the use of automated dispensing cabinets throughout the institution. The department is staffed by a total of 49 full time equivalents providing a wide range of operational and clinical services both on the inpatient and ambulatory care sides. Our pharmacy technicians are highly trained professionals who are competent to perform a wide range of technical and patient care activities including the compounding of both sterile and non-sterile products. Clinical generalist pharmacists work in the main pharmacy fielding drug information requests, reviewing laboratory data, allergies and vetting appropriateness of all medications ordered through the CPOE system while overseeing the medication distribution activities of pharmacy technicians. Clinical specialist pharmacists are decentralized throughout the institution providing specialized pharmaceutical care at the bedside and in the outpatient settings. Currently over 95% of the pharmacy technicians are certified by the Pharmacy Technician Certification Board (PTCB) while ten pharmacists hold prestigious Board Certifications in a variety of specialty areas.

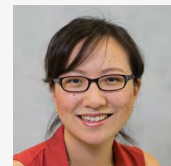
The presence of decentralized clinical pharmacist specialists is a great source of satisfaction to our patients in addition to the rest of the interdisciplinary team. The specialists have been instrumental in improving patient satisfaction survey scores as they pertain to communication about medications, educating patients on what their medications are for and what side effect to expect. Their daily activities are focused on patient monitoring, rounding with prescribers, providing medication information to both patients and other members of the health care team. Clinical specialists are decentralized in the ICU, Emergency Department, Psychiatry and Medical-Surgical units. Clinical activities are further supported by two Rutgers faculty members and an antimicrobial stewardship pharmacist. Our highly specialized staff serves as preceptors for our ASHP Accredited PGY1 Residency Program as well as students on rotation from Ernest Mario School of Pharmacy, Rutgers University. Residents from other hospitals are also frequently hosted by JCMC preceptors.

Pharmacists at JCMC bring their expertise outside of the four walls by participating in a host of community outreach activities. In addition to serving the inpatient population, the pharmacy department services a number of outpatient clinics including HIV, oncology, behavioral health, women's health, dental, vision, wound care, maternal fetal health and group homes. The pharmacy department also services a hospital licensed satellite emergency department located in Bayonne.

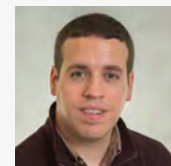
The pharmacy staff consistently strives for excellence. In 2021, the pharmacy department took sole responsibility for the opening and operation of the hospital's COVID vaccine clinic. Twelve pharmacists and three pharmacy technicians obtained licenses to immunize in the State of New Jersey. Pharmacists continue to keep abreast of literature and rapidly changing guidelines pertaining to the use of vaccines and other medications to treat COVID to assure that all therapy is safe and appropriate. Through rigorous data collection, medication use evaluations are routinely performed. These evaluations are the foundation of future research projects and publications. The research and scholarly activities of the pharmacy team serve as a jumping off point for new initiatives at the hospital which have helped us to consistently provide positive outcomes for our patients and the community.



**Maria DeVivo, PharmD,
MPA, BCPS, BCACP**
Director of Pharmacy
Services



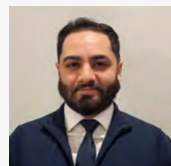
**Sandy Moreau, PharmD,
BCPS**
Clinical Coordinator,
PGY1 Pharmacy
Residency Program
Director



**Patrick Mormino,
PharmD**
Pharmacy Operations
Supervisor



Tiffany Cheng, PharmD
Sterile Products
Supervisor



**Muhammad Shahid,
PharmD**
Pharmacy Infusion Center
Supervisor



Sheryl Darville, PharmD
Information Technology
Pharmacist

Acute Care Service Line

Monmouth Medical Center

RWJBarnabas
HEALTH

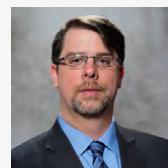
The Monmouth Medical Center Department of Pharmacy takes care of inpatients and outpatients in a decentralized practice model. MMC Pharmacy is committed to ensuring patient satisfaction and continuity of care. The outpatients cared for by the pharmacy are registered to radiology, laboratory, surgery, psychiatry, cardiology, outpatient infusion centers, and the emergency department. The hospital pharmacy takes care of a very large outpatient oncology/hematology population, servicing the Valerie Fund pediatric infusion center, the BBR4 outpatient adult infusion center, and the Vantage Point adult infusion center.

The Vantage Point infusion center is offsite, but part of the hospital, and has two dedicated pharmacists, a technician, a specialty pharmacist liaison, and a dedicated chemotherapy compounding area. The hospital pharmacy also works closely with the retail pharmacy, located in the lobby, to ensure continuity of care for patients transitioning out from the facility using the hospital's meds-to-beds program. The hospital participates in the 340B drug pricing program, the benefits of which apply to our outpatients treated by the hospital pharmacy and contracted retail pharmacies.

The inpatient pharmacy is decentralized into two medical-surgery areas of the hospital with pharmacists operating to verify orders on the units, and attending rounds and counseling patients. The decentralized model is supported by computerized prescriber order entry (CPOE), automated dispensing cabinets (ADC) on the units, and bed-side barcode medication administration (BCMA). Technicians support the decentralized pharmacists by restocking the ADCs and delivering non-stocked medications to the units from the central pharmacy. In the central pharmacy, the technicians assist pharmacists by answering phones, filling labels, compounding and picking medications, and performing deliveries. Centralized clinical pharmacists answer phones, verify orders, and oversee technician activities and IV room compounding.

The pharmacy has 5 clinical specialists who provide additional support and serve as resources to the pharmacy, nurses, physicians and patients. There are two in-house clinical specialists, emergency department, and antimicrobial stewardship. The pharmacy also has 3 inpatient Rutgers faculty, including internal medicine, critical care, and psychiatry. Another novel practice at MMC is the placement of two pharmacy technicians in the emergency department dedicated to collecting accurate medication histories for the physicians to reconcile. All pharmacy staff are expected to promote the core values of the pharmacy and document their value and contribution.

The hospital services supported by the pharmacy department include pediatrics, neonatal, gynecology/maternity, critical care, psychiatry, general medicine, emergency medicine, neurology, neurosurgery, orthopedic surgery, general surgery, robotic surgery, geriatrics, and oncology. In addition to precepting over 40 pharmacy students per year, the pharmacy department also maintains a pharmacy residency program, which hosts two PGY1 residents.



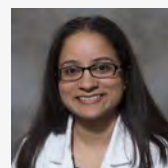
Scott Mathis, PharmD
Regional Director of
Pharmacy Services,
Monmouth Medical
Center Campuses



Todd Butala, PharmD
Assistant Director of
Operations



Hoytin Lee Ghin, PharmD
Assistant Director of
Clinical Pharmacy
Services,
Monmouth Medical Center



Sajani Patel, PharmD
Dayshift Supervisor

**Kathleen Tondo,
PharmD**
IV Supervisor

**Annemarie Mathew,
PharmD**
Evening Supervisor

Acute Care Service Line

Monmouth Medical Center Southern Campus



The Monmouth Medical Center Southern Campus Department of Pharmacy takes care of both inpatients and outpatients 24 hours per day, and is committed to ensuring patient satisfaction, patient safety, and continuity of care.

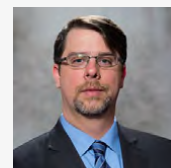
The outpatients cared for by the pharmacy department are seen in the emergency department, radiology, wound care, surgery, and outpatient infusion center. The hospital pharmacy takes care of a growing outpatient oncology/hematology population, onsite in the outpatient infusion center. The hospital participates in the 340B drug pricing program, the benefits of which apply to the population they serve.

The inpatient pharmacy is centralized near the emergency department and the operating room. In the central pharmacy, the technicians assist pharmacists by answering phones, filling labels, compounding and picking medications, and performing deliveries. Centralized clinical pharmacists verify orders, attend to drug information inquiries, monitor drug therapy, prepare medications for dispensing, perform IV room drug compounding, and oversee all technician core duties and assigned activities.

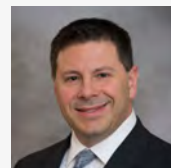
The services are structured to incorporate the pharmacist into the multidisciplinary team during rounds when possible. The model is supported by computerized prescriber order entry (CPOE), automated dispensing cabinets (ADC) on the units, and bedside barcode medication administration (BCMA). Technicians support the pharmacists by restocking the ADCs and delivering the manually prepared and non-stocked medications to the units from the central pharmacy.

The pharmacy has two clinical specialists who provide additional support and serve as resources to the pharmacy, nurses, physicians, and patients. These pharmacists provide daily clinical support in the Emergency Department, Critical Care, and antimicrobial stewardship as well as interact and counsel patients whenever there is a need. They monitor drug therapy in detail, evaluate therapy outcomes, attend patient care rounds, and assess for proper compliance with safe practices, and with practice in accordance with clinical policy. The hospital services supported by the pharmacy department include pediatrics in the emergency department, critical care, geriatrics, oncology, psychiatry, general medicine, emergency medicine, neurology, orthopedic surgery, general surgery, ophthalmologic surgery, podiatric surgery, and ear nose and throat surgery. The hospital has also added a meds-to-bed service with a pharmacy technician liaison.

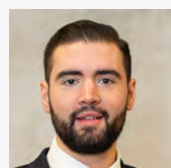
The pharmacy department is involved in numerous community outreach activities that help assist and improve drug information knowledge for the community at flu clinics, cardiac rehab brown bag events, and better health program events. The department also precepts pharmacy students each year. In addition, the clinical specialists offer rotation opportunities to pharmacy residents from other hospitals within the RWJBarnabas Health system, when applicable. All pharmacy staff is expected to promote the care values of the pharmacy department and help promote patient safety and quality care in all aspects of the profession.



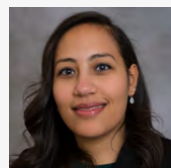
Scott Mathis, PharmD
Regional Director of
Pharmacy Services,
Monmouth Medical
Center Campuses



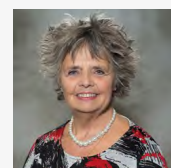
Gary Del Piano, PharmD
Director of Pharmacy
Services



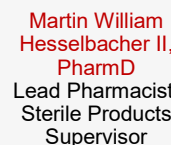
**Alexander Clark,
PharmD, BCPS**
Clinical Specialist



**Yasmine Elbaga,
PharmD, BCPS**
Clinical Specialist



Margaret Kosc, RN, MHA
Pharmacy Systems
Analyst, Behavioral Health
and Monmouth Medical
Center Southern Campus



**Martin William
Hesselbacher II,
PharmD**
Lead Pharmacist,
Sterile Products
Supervisor

Acute Care Service Line

Newark Beth Israel Medical Center



Newark Beth Israel Medical Center is a 665-bed regional care teaching hospital that provides comprehensive health care. Newark Beth Israel is a Top Teaching Hospital and home to one of the nation's top 15 heart transplant centers, which has performed more than 1,100 heart transplants; New Jersey's only Advanced Lung Disease and Transplant Program and a Valve Center that performs complex cardiac valve procedures. The hospital is also home to Children's Hospital of New Jersey (CHoNJ), which cares for children from birth through adolescence, with more than 30 specialized pediatric services including New Jersey's largest Valerie Fund Children's Center for Cancer and Blood Disorders and the Children's Heart Center. The hospital has received numerous awards that recognize their excellence in delivering healthcare. Accolades include three consecutive World's Best Hospital by Newsweek, 6 consecutive "A" grade from The Leapfrog Group, best Maternity Hospital designation from Newsweek,

The Department of Pharmacy's mission is to provide our patients with effective pharmaceutical care in a safe, compassionate and innovative environment. Over 90 employees who consist of highly trained pharmacists, technicians, residents, and administrative pharmacy staff ensure the safe delivery of pharmaceutical services for all inpatient and outpatient age groups.

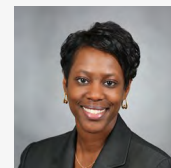
In order to support the multiple acute care services that Newark Beth provides, the pharmacy is decentralized in the pediatric, oncology, emergency, and critical care wings of the hospital, enabling pharmacists to be an immediate medication expert resource to all members of the healthcare team. In the central pharmacy, the clinical staff pharmacists verifies orders for those areas that do not have a decentralized pharmacy, answers medication related questions, and oversees the overall dispensing of medications and compounding of sterile products.

Technicians, many of which hold additional certifications, support the activities of the pharmacists in the decentralized areas and main pharmacy. Our patient discharge advocate technician provides the services of the Meds-to-Beds program. They work collaboratively with the healthcare team to ensure continuity of care by having patients' medications available to them prior to discharge. The department also manages the hospital's 340b program that generates cost savings that helps support programs such as the patient liaison technician role, which improves medication access and adherence.

The pharmacy has five clinical specialists, who provide specialized services in the areas of transplant, critical care, pediatrics, and internal medicine. They provide additional support to pharmacy, physicians, patients, and many other healthcare disciplines by participating in daily multidisciplinary rounds and providing pharmaceutical recommendations at the bedside to optimize patient care. They also support the accredited PGY1 Pharmacy Residency program by serving as preceptors and mentors.

The department provides unique and innovative educational opportunities for pharmacy students, technicians, and residents as well as other healthcare disciplines throughout the hospital and has contributed to the field of pharmacy through multiple poster presentations at local and national conferences.

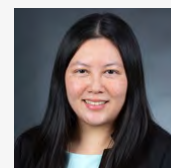
The department is an active member of the hospital's journey toward being a high reliability organization through participation on various performance improvement committees and by striving to provide the best pharmaceutical services to our patients and community through developing partnerships with patients and health care providers.



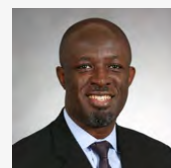
Sandra Richardson, PharmD
Director of Pharmacy Services



Dehali Banyopadhyay, PharmD, MS
Assistant Director of Operations



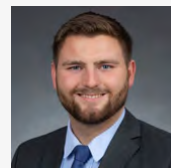
Polly Jen, PharmD, BCPS-AQ ID, AAHIVP
Assistant Director of Clinical Services



Kwakye Acheampong, PharmD, BCPS
Pharmacy Operations Supervisor



Marcel Redhead, PharmD
Sterile Products Supervisor



Brian Bishop, PharmD
Pharmacy Systems Integration Analyst

Acute Care Service Line

Robert Wood Johnson University Hospital Hamilton



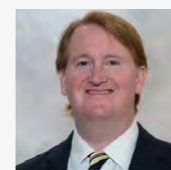
The Department of Pharmacy Services provides pharmaceutical care to the inpatients and outpatients of RWJ University Hospital at Hamilton, a 265 bed community hospital which is committed to Excellence Through Service and Quality. We exist to promote, preserve and restore the health of our community. The vision at Hamilton is to passionately pursue the health and well-being of our patients, employees and the community through our culture of exceptional service and commitment to quality. The department supports all services within the hospital which includes inpatient, surgical, emergency and radiology services. We also care for our oncology patients in a robust outpatient hematology/oncology center located on campus. The pharmacy department also provides a pharmacist run outpatient anticoagulation clinic staffed by an anticoagulation certified pharmacist.

Pharmacy is highly integrated into the hospital patient safety system with the utilization of a common health information system shared among our inpatient department promoting intradepartmental information exchange. Pharmacy also utilizes a hospital wide automated medication distribution through a highly controlled network of automated dispensing cabinets in the inpatient, emergency, radiology and surgical suite areas. Our clinical information system supports the medication safety process from the creation of the medication order by utilization computer prescribed order entry (CPOE) with clinical alerts and algorithms, review and verification of medication orders by a pharmacist, through the use of Bar Code Medication Administration (BCMA) at the patients' bedside. The clinical information system also supports safe medication use at RWJ Hamilton by providing in real time current patient medication regimens, current patient labs, allergies, significant patient demographics along with screening for drug-drug interactions, dose range checking and compatibility checks.

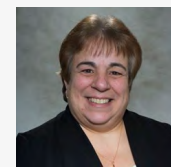
Through a staff of 50 highly trained pharmacists and technicians, the department provides a hybrid decentralized/centralized staff model. We continue our clinical staff developed training model where criteria based competency with a Critical Care Pharmacist designation within the facility. These pharmacists work with our ICU intensivists under to provide prospective medication reviews and clinical services. We were able to expand this team from four pharmacists to eight pharmacist to allow for expanded services to the ICU and enhanced staff development. Cross-training in the pharmacy department has expanded and been a major focus of 2021, particularly with the cancer center and anticoagulation clinic. Through strong efforts, our staff in collaboration with other RWJ Hamilton staff helped achieve another A as our Leapfrog rating in 2021. Our staff are decentralized in the ICU, telemetry and medical/surgical units in order to provide medication therapy review and management utilizing a pharmacy surveillance system that monitors for over 175 medication related issues in real time. This, in collaboration with all members of the healthcare team, patients and their care givers, provide quality, evidence-based, cost effective care to help achieve our mission and vision.

Our Antimicrobial Stewardship Taskforce is a successful example of pharmacy's impact on overall outcomes. Not only has the team improved utilization and outcome indicators, but have also reduced dollars spent on antimicrobials in 2021, illustrating that quality care can be achieved with savings. Besides the outpatient anticoagulation service that is offered, Medical Staff approved protocols are used by inpatient pharmacists to manage anticoagulation therapy and vancomycin initial dosing. Our pharmacists are also members of and respond to all Rapid Response Team and Medical Team alerts. Pharmacy is also active in patient education. We provide medication related sessions in orthopedic, antibiotic use education and various community education events and fairs. Pharmacy staff has also taken the lead in the formulation of an opiate Stewardship Taskforce to better measure, assess and determine improvements in opiate use to maximize benefit to our patients while reducing the risks that are associated with opiate use.

In keeping with our commitment to our own profession, our staff precepted 21 pharmacy and pharmacy technician students this year, mostly from the Ernest Mario School of Pharmacy. Our staff prides itself on helping develop highly qualified practitioners and giving back to our own profession and community. We maintained our Knight Scholar program with our affiliation with Ernest Mario School of Pharmacy where we take students for a period of four clinical rotations where they are exposed to clinical, administrative and leadership which enhances the overall experience for them and their development.



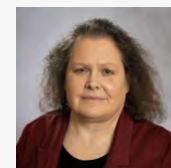
**Jonathan Margolin, MHA,
RPh, ACHE**
Director of Pharmacy
Services



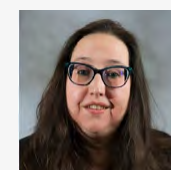
**Suzanne Caravella,
PharmD, BCPS, RPh**
Clinical Coordinator



David Appel PharmD
Pharmacy Operations
Manager



**Anne Hameed, CPhT,
CSPT**
Sterile Products
Supervisor



Kathy Stocker, CPhT
Pharmacy Buyer

Acute Care Service Line

**Robert Wood Johnson
University Hospital
New Brunswick**

**RWJBarnabas
HEALTH**

Robert Wood Johnson University Hospital at New Brunswick is a 620-bed academic medical center whose Centers of Excellence include cardiovascular care from minimally invasive heart surgery to transplantation, cancer care, stroke care, neuroscience, joint replacement, and women's and children's care including The Bristol-Myers Squibb Children's Hospital (BMSCH). The hospital treats over 30,000 inpatients and has over 70,000 Emergency Room visits annually. As the flagship Cancer Hospital of Rutgers Cancer Institute of New Jersey and the principal teaching hospital of Rutgers Robert Wood Johnson Medical School in New Brunswick, RWJUH-NB is an innovative leader in advancing state-of-the-art care. A Level 1 Trauma Center and the first Pediatric Trauma Center in the state, RWJUH's New Brunswick campus serves as a national resource in its ground-breaking approaches to emergency preparedness.

The Pharmacy Department provides decentralized services 24 hours a day, 7 days a week by a staff of approximately 160 employees including Pharmacists and Technicians. Specialized pharmaceutical services are provided throughout the hospital with the role of pharmacy in patient care being widely accepted. At RWJUH-NB, the pharmacists serve as active participants in the interdisciplinary healthcare team, participate in all adult and pediatric codes, and are active members on various hospital safety and quality committees. Our Technicians are certified by the Pharmacy Technician Certification Board (PTCB) and are integral members of the pharmacy team. They provide essential support to pharmacists by compounding sterile and non-sterile medications, filling medication orders, optimizing and filling automated dispensing cabinets (ADCs), ensuring medications are barcoded and delivering to patient care areas.

Technology is widely integrated into the Pharmacy Department and includes integration of a hospital-wide Computer Physician Order Entry (CPOE) with disease-specific order sets and safety features such as dose-range checking and maximum allowable doses. ADCs in nursing units, operating rooms, procedural areas and emergency areas are the basis of the unit-based distribution technology employed at RWJUH New Brunswick. The Pharmacy also has an inventory control system utilizing carousel technology and uses internal barcode scanning for accuracy of loading and dispensing from the system. Knowledge-based barcode administration and an electronic intervention reporting system round out the department's technology.

The Department is supported by a Pediatric Clinical Specialist, two Transplant Pharmacists, an Oncology Clinical Specialist, and five Ernest Mario School of Pharmacy Rutgers University Shared Faculty, who specialize in Critical Care, Drug Information, Emergency Medicine, Infectious Diseases and Internal Medicine. These individuals along with Pharmacy staff support precepting and mentoring two PGY1 Residents, two PGY2 ER Residents, and two PGY2 Drug Information Residents and over 80 students per year. Finally, RWJUH New Brunswick is the primary site for the Health Scholars Institute program of New Brunswick, with many high school students taking an avid career interest as either a Pharmacy Technician or Pharmacist.

Pharmacy Department Mission:

It is the goal of the Hospital Pharmacy Department to provide high quality, comprehensive pharmaceutical services in the area of patient care and to provide recognized, meaningful research and education to Robert Wood Johnson University Hospital at New Brunswick and the community which it serves. It is the philosophy of the Department not only to function at the highest level of acceptable practice, but to be committed to innovation and development within that practice and to serve as a role model for Institutional Pharmacy Practice.

A dedicated staff and effective management, at all administrative levels, are necessary for the achievement of our goals. This requires planning, budgeting, communication and the development and administration of sound, progressive and equitable personnel policies. The Department will strive to recruit and retain highly qualified and competent staff and is also committed to facilitating professional growth within the department.



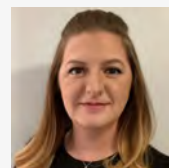
Jodie Skayhan, PharmD
Administrative Director,
Pharmacy



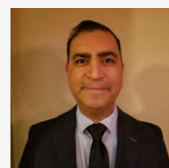
**Sharon Mindel, PharmD,
MBA**
Assistant Clinical Director
of Pharmacy, PGY1
Residency Program
Director



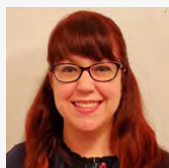
James Barna, PharmD
Operations Manager



**Candice Lawrence,
CPhT**
Supervisor/Lead
Technician



**Moises Junchaya,
PharmD**
Pharmacy Systems
Administrator



Melissa Thornhill, CPhT
Sterile Products
Supervisor

Acute Care Service Line

**Robert Wood Johnson
University Hospital Rahway**



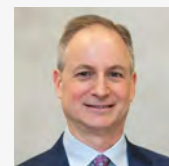
The Department of Pharmacy Services provides pharmaceutical care to the inpatients and outpatients of RWJ University Hospital Rahway (RWJUHR). The mission at RWJUHR is to deliver safe, quality, cost effective healthcare services, providing access and value to the community through a unified effort that meets individual needs with dignity and respect.

Through a staff of 24 highly trained pharmacists and technicians the department provides a hybrid decentralized/centralized staff model 24 hours a day, 7 days a week. Decentralized pharmacists allow the department to have increased direct patient contact time to help achieve hospital goals of improving clinical outcomes and measures along with increasing our patient satisfaction scores. Our department provides optimum pharmaceutical services through collaboration with all members of the healthcare team, patients and their caregivers in a cost-effective, evidenced-based manner with the goal of improving patient outcomes. In 2021, the department actively intervened on medications to prevent over 4,000 adverse events and adverse reaction from reaching our patients and provided direct patient contact to approximately 2,000 patients.

The decentralized model is supported by computerized prescriber order entry (CPOE), automated dispensing cabinets (ADC) on the units, and bed-side barcode medication administration. Pharmacist activities are supported by pharmacy technicians, holding additional certifications from institutions such as the Pharmacy Technician Certification Board. The department has one clinical pharmacy specialist in critical care/infectious diseases area and one clinical manager who are an integral part of the various committees and actively precept students. They help to drive the institution's efforts to meet Joint Commission/Leapfrog and CDC requirements while ensuring optimal care for patients.



**Sheetal Patel,
PharmD, BCPS**
Director of Pharmacy
Services



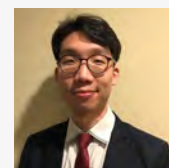
Steven DePaolo, RPh
Enterprise Clinical
Information System
Pharmacist



Lori Gonzalez, CPhT
Pharmacy Buyer



**Priyanka Kelshikar,
PharmD, BCPS**
Pharmacy Clinical
Manager



**Hwan "Mike" Namkung,
PharmD**
Pharmacy Operations
Manager

Acute Care Service Line

Robert Wood Johnson University Hospital Somerset



Robert Wood Johnson University Hospital (RWJUH) Somerset, an RWJBarnabas Health facility, is a nationally accredited, 341-bed regional hospital providing comprehensive emergency, medical/surgical, behavioral health and rehabilitative services to central New Jersey residents. As a designated teaching hospital of Rutgers Robert Wood Johnson Medical School, the hospital maintains a family medicine residency program with 21 residents.

RWJUH Somerset has earned significant national recognition for clinical quality and patient safety including the Magnet® Award for Nursing Excellence and designation as a "Top Teaching Hospital" by the Leapfrog Group. As the first hospital in New Jersey to offer primary health care services for the LGBTQIA community, RWJUH Somerset has been honored as a Leader in LGBT Healthcare Equality by the Human Rights Campaign.

The Steeplechase Cancer Center at RWJUH Somerset has been designated as a Comprehensive Community Cancer Center by the American College of Surgeons' Commission on Cancer. RWJBarnabas Health and RWJUH Somerset in partnership with Rutgers Cancer Institute of New Jersey - the state's only NCI-designated Comprehensive Cancer Center - bring an internationally recognized team of researchers and specialists, providing close-to-home access to the latest treatment and clinical trials. The hospital is also distinguished for its Joint Surgery Institute, and is designated as a Primary Stroke Center by the Joint Commission and the New Jersey Department of Health and Senior Services.

The Department of Pharmacy provides pharmaceutical services 24 hours a day, 7 days a week. Overall, there are approximately 34 FTEs including managers, pharmacists, residents, technicians and support staff. All pharmacy technicians are certified by the Pharmacy Technician Certification Board (PTCB) and assist pharmacists in filling orders, medication delivery, and sterile and non-sterile product compounding. Medication reconciliation technicians work in the Emergency Department and interact with patients, families, and retail pharmacies to ensure an accurate medication history is obtained. Clinical services are provided in various areas including, but not limited to internal medicine, critical care, emergency medicine and other specialty areas (e.g. geriatrics, infectious diseases, oncology and investigational drugs).

Medication is dispensed via a point of care decentralized distribution model supported by automated dispensing cabinets (ADC) on patient care units that provide nurses ready access to medications. A complete IV admixture service compliant to United States Pharmacopeia (USP) 797 regulations is also provided. With a dedicated staff of employees, modern facilities, a strong commitment to medication safety and performance improvement, a focus on customer service, and a role in educating future health-care professionals, the Department of Pharmacy at RWJ University Hospital Somerset is devoted to delivering operational and clinical excellence, while advancing care and maintaining financial and operational growth.

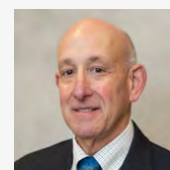
In 2021, RWJUH Somerset was the first acute care hospital in the RWJBarnabas Health system to go live with EPIC, a state-of-the-art electronic health record system with enhanced communication amongst providers and improved delivery of care. Pharmacy staff continue to support the implementation and enhancement of EPIC to ensure safe medication use. The system allows for computerized prescriber order entry (CPOE), guidance from evidence-based order sets, an electronic medication administration record (e-MAR) and bedside bar-code medication administration (BCMA).

Our pharmacists are actively involved in therapeutic management. Our policies, guidelines, programs and services ensure that patients receive evidence based appropriate pharmaceutical care as measured against accepted standards. Several clinical programs and protocols have been developed at RWJUH Somerset by the Department of Pharmacy, which include but are not limited to drug dosing protocols, the Antimicrobial Stewardship Program (i.e., pharmacy run vancomycin pharmacokinetic service, antimicrobial rounds), and clinical monitoring programs (i.e., anticoagulation monitoring program). Our critical care pharmacist works with our intensivists under collaborative protocols to optimize medication therapy in the critical care patient population. Three Rutgers faculty, who are residency trained and dual board certified support the clinical pharmacy program. They provide a significant contribution and serve as resources to family medicine, critical care, and the emergency department.

Individuals from the Department of Pharmacy are involved in numerous research activities, frequently publish and present scholarly work, and provide external educational programs on a national, state and local level. Pharmacists provide drug information and education to medical and nursing staff as well as patients, caregivers, and other members of the health care team to promote the safe, effective, efficient, and patient-centered use of medication therapy. In 2021, we became the practice site for a Rutgers University clinical pharmacology fellow whose research involves the impact of discharge medication reconciliation on patients at high risk for medication related iatrogenesis and re-admission.

Since the start of the pandemic, Pharmacists have been an integral part of the RWJUH Somerset COVID team responsible for the development and implementation of COVID drug related algorithms. Pharmacists have been involved in several interdisciplinary COVID 19 research projects leading to publications and presentations at national meetings. Pharmacy has also supported our hospital COVID 19 vaccine clinic providing vaccines to employees and the community at large.

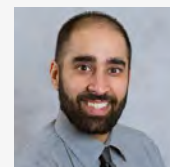
RWJUH Somerset Department of Pharmacy is currently affiliated with Ernest Mario School of Pharmacy at Rutgers University, precepting more than 50 students per year and serving as a Knight Scholar site. The Department has established training and continuing education programs to foster the professional development of staff and students, and has had a PGY1 Residency program since 2015 with two PGY1 resident positions.



Stuart Vigdor,
BS Pharm, RPh
Director of Pharmacy
Services



Nancy Doherty, MS, RPh
Clinical Coordinator,
Medication Safety Officer,
PGY1 Residency Program
Director



Kabeer Mago, PharmD
Operations Supervisor



Matthew Levanda, MBA,
RPh, BCSCP
Sterile Products
Supervisor



Stephanie Wei,
PharmD, BCPS
Pharmacy Systems
Administrator

Integrated Service Line



Purpose Statement

It is the mission of the Ambulatory Care Division to provide integrated health-care services by pharmacists who are accountable for addressing medication needs, developing sustained partnerships with patients and practicing in the context of family and community. This is accomplished through direct patient care, patient advocacy, wellness and health promotion, education and medication management for ambulatory patients.

Who We Are

The Ambulatory Care Division is led by a team of clinical specialists, Fairleigh Dickinson University, and Rutgers University faculty with expertise in assisting in the delivery of primary care, population health management, patient education and patient advocacy.

How We Accomplish Our Mission

- Placing a priority on direct patient care and meaningful interventions to improve the well-being of the patients
- Having an established presence within several physician office practices. In this setting, we are available to develop relationships with patients and providers in order to establish successful practice based initiatives.
- Aiding in medication reconciliation and drug optimization in order to improve patient outcomes and adherence.
- Utilizing resources such as pharmacy residents and students to foster a learning environment and broaden the reach of the division.
- Tracking interventions, monitoring progress of patients and initiatives, reporting successes and learning opportunities with other providers to improve the health of the patients we serve.
- Tailoring pharmacy services to meet value-based payment models.
- Developing collaborative drug therapy management (CDTM) agreements with providers to increase efficiencies of team-based care.
- Coordinating efforts on community outreach and Global health initiatives, Emergency Management and Disaster Relief efforts.

Duties/Responsibilities

The Ambulatory Care Division works closely with healthcare providers, residents, students, and medical staff to:

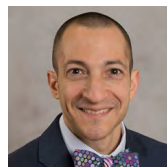
- Create Centers of Excellence for ambulatory pharmacy training
- Perform comprehensive medication reviews to assess the appropriateness of medications, check for drug-drug interactions, and identify and resolve any adverse drug reactions
- Formulate patient specific medication related treatment and monitoring plans
- Evaluate and titrate patients' medications after close monitoring of patients' response to therapy pertaining to safety and efficacy
- Assist in the medication acquisition process, helping patients obtain needed medications at an affordable cost
- Deliver accurate, comprehensive, disease specific and/or patient specific drug information to patients, caregivers, and health care providers involved in the care of the patient
- Perform research and utilize findings to optimize patient care and outcomes
- Provide an environment to train future ambulatory care providers
- Connect with the larger community by participating in wellness activities across the region



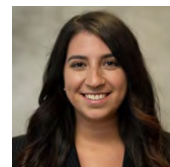
Ammie Patel, PharmD, BCACP
Ambulatory Care Specialist,
Corporate Pharmacy,
Clinical Assistant Professor,
Ernest Mario School of
Pharmacy



Samuel Reveron, PharmD, BCPS
Ambulatory Care Clinical
Specialist, Cooperman
Barnabas Medical Center,
Atkins-Kent



Lucio Volino, PharmD
Clinical Pharmacist Retail
Network and Clinical
Associate Professor, Ernest
Mario School of Pharmacy,
Rutgers University



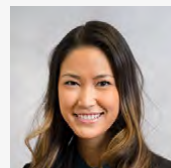
Jennifer Weiss, PharmD
PGY2 Ambulatory Care
Pharmacy Resident



Jessica Bente, PharmD, BCPS, BCGP
Clinical Specialist, Geriatrics,
PGY2 Geriatrics Residency
Program Director,
Cooperman Barnabas
Medical Center



Christine Dimaculangan, PharmD, BCACP
Ambulatory Care Clinical
Specialist, Jersey City
Medical Center, Clinical
Assistant Professor, Ernest
Mario School of Pharmacy



Alyssa Gallipani, PharmD, BCACP
Ambulatory Care Clinical
Specialist, Corporate
Pharmacy PGY2
Ambulatory Care Residency
Program Director, Clinical
Assistant Professor, FDU



Rahul Jacob, PharmD, BCACP
Ambulatory Care Clinical
Specialist, Corporate
Pharmacy



Lalitha Sukumar, PharmD
Ambulatory Care Clinical
Specialist, Corporate
Pharmacy

Integrated Service Line

Corporate Pharmacy Division

Purpose Statement

The purpose of the Corporate Pharmacy Division is to provide leadership and direction for the strategic, operational, clinical, research, financial, marketing and administrative functions associated with pharmacy services across the enterprise.

Mission Statement

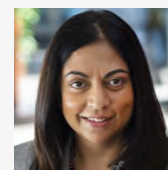
To design and implement strategies to harmonize current and future Pharmacy services for optimal value, quality, efficiency, safety and effectiveness across the Pharmacy Enterprise.

Who We Are

The Corporate Pharmacy Division is a team of individuals with expertise in pharmacy: administration, clinical practice, value based purchasing, the 340B federal pricing program, system integration, clinical decision support, ambulatory practice, cost controls, revenue optimization, strategic planning and data analytics. The team is led by the health system's Chief Pharmacy Officer. The team consists of a Vice President of Integrated Pharmacy Services, Director of Pharmacy Systems Integration, Director of Clinical Pharmacy Services, Director of Pharmacy Operations, Assistant Director of Clinical Services, 340B Drug Price Program Director and two analyst and audit specialists, Senior Pharmacy Reimbursement Specialist, Pharmacy Billing, Denials, and Appeals Specialist and Clinical Financial Analyst.

How We Accomplish Our Mission

- 340B Program Oversight
- Centralized value based purchasing
- Clinical Decision Support
- Enterprise-wide strategic planning
- Enterprise-wide analytic reports
- Formulary and protocol standardization
- Medication supply chain stabilization
- Multiple advocacy platforms
- Pharmaceutical industry conduit
- Revenue optimization
- Systems integration



Indu Lew, PharmD
Executive Vice President
and Chief Pharmacy Officer



Robert Pellechio, RPh, MPA
Corporate Vice President
of Integrated Pharmacy
Services



Doug DeStefano, PharmD
Corporate Director of
Pharmacy Operations



Ellen Secaras, MBA, RPh
Corporate Director of
Pharmacy Systems
Integration



Angelina Bayruns, CPhT
340B Analyst



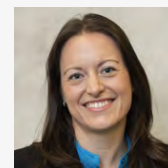
Jessica Hill, PharmD, BCPS, BCACP, FASHP
Assistant Director of Clinical
Services



Tammy Kupper, CPhT
340B Analyst



Bryan McCormick, CPhT, MBA
Corporate Director 340B
Program



Jennifer Sternbach, PharmD, BCPS, BCACP
Corporate Director of
Clinical Services



Berna Sweeney, CPhT
Senior Pharmacy
Reimbursement Specialist



Rahul Nakrani, MBA, MS
Clinical Financial Analyst

Integrated Service Line



The 340B Program requires pharmaceutical manufacturers to extend upfront discounts on covered outpatient medications purchased by federally registered covered entities. Congress passed the 340B Program as part of the Veterans Health Care Act in November of 1992. The program's intent was to aid safety-net providers whom serve the nation's most vulnerable patient populations in "stretching scarce federal resources as far as possible, reaching more eligible patients and providing more comprehensive services." Pharmaceutical discounts extended to covered entities range anywhere from 15 to 60 percent. RWJBarnabas Health (RWJBH) has been able to transform these savings into increased access to care and medication for eligible patients in underserved communities with the greatest need.

The RWJBH 340B Program began with a single hospital over 10 years ago. The health system has since expanded into six disproportionate share hospitals (DSH) and one hemophilia treatment center registered with the Health Resources and Services Administration (HRSA) as 340B covered entities. The program is due to expand at the beginning of 2022 with the addition of Trinitas Regional Medical Center to RWJBH, elevating the DSH count to seven. Each covered entity has Contracted Pharmacy agreements with a local retail network, including our own retail pharmacies. These arrangements further increase access to affordable medication for our eligible patients.

The RWJBH pharmacy enterprise has a central role in the initiation, operations, compliance and auditing of this complex program. This requires a coordinated effort between local facilities and the corporate pharmacy 340B team with the support of our 340B software vendor. The 340B team ensures RWJBH covered entities provide all required data to essential external vendors and routinely conduct data integrity reviews to maintain accuracy and compliance.

RWJBH facilities participating in the 340B Program are subject to audit by drug manufacturers, HRSA, and internal audit from the Corporate 340B Division. Failure to comply with 340B Program requirements could result in refund of discounts back to a manufacturer(s) or potential expulsion from the program. During 2021, the Corporate Pharmacy 340B Team successfully converted RWJBH's third party application (TPA) for 340B operations and compliance to Verity Solutions. The transition presented additional mechanisms for increased patient 340B eligibility, greater flexibility conducting internal audits, and reduced Pharmacy Buyer functions through enhanced automation. The team spent much of 2021 streamlining the new TPA system, addressing unforeseen obstacles post go-live and assisting with training of all RWJBH 340B stakeholders.

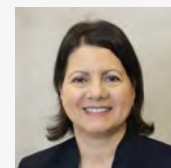
In 2021, the Corporate Pharmacy 340B Team successfully conducted 60 routine audits of RWJBarnabas Health covered entities in addition to over 6,000 individual claim audits in the new TPA. Additionally, the team fielded 3 manufacturer and Medicaid duplicate discount inquiries and audited invoicing and ordering for the health system's 31 different contract pharmacy agreements. The Team's efforts, executed with limited resources, helped to ensure compliant 340B Program utilization. Through continuous evaluation of 340B Program operations, the team has continued to increase efficiencies and maximize program benefits for the RWJBarnabas Health System.



Robert Pellechio, RPh, MPA
Corporate Vice
President of Integrated
Pharmacy Services



Bryan McCormick, CPhT, MBA
Corporate Director 340B
Program, Corporate
Pharmacy



Angelina Bayruns, CPhT
340B Analyst, Corporate
Pharmacy



Tammy Kupper, CPhT
340B Analyst, Corporate
Pharmacy

Integrated Service Line



Purpose Statement

The purpose of the Pharmacy Reimbursement Division (PRD) is to enhance internal stakeholders' pharmacy billing and financial acumen and help optimize the reimbursement for our medications used within our healthcare system affiliates.

Mission Statement

The mission of the division is to assist the health system in maintaining its fiscal responsibility by improving the recovery of medication revenue.

Who We Are

The PRD consists of a team of individuals with expertise in medication billing and reimbursement. The team is led by a Corporate Director of Pharmacy Systems Integration and supported by a Senior Pharmacy Reimbursement Specialist. All team members have a background as a pharmacist, certified pharmacy technician or medication billing management.

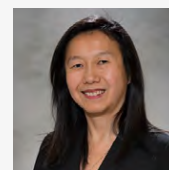
How We Accomplish Our Mission

Our team accomplishes our objectives by continuously collaborating with our internal and external customers comprised of various interdisciplinary departments (pharmacy departments, billing, patient accounting, revenue cycle IT, revenue integrity, finance, managed care and enterprise clinical information systems) and third-party vendors to resourcefully seek innovative pharmacy revenue opportunities. We proactively reconcile charges and review Federal, State and Commercial billing regulations while decreasing insurer denials.

Duties/Responsibilities

The PRD operates under the Corporate Pharmacy department. Duties and responsibilities are established to meet the need of our internal and external customers and to support the division's purpose and mission as well as system-wide strategies.

- Reviews, identifies, and helps affiliates remedy aberrant medication charges
- Performs audits post go-live, either operational or clinical in nature, to ensure that expected outcomes are met and help mitigate unintended consequences
- Responds to pharmacy billing inquiries in a timely manner and offers guidance regarding insurance reimbursement
- Educates affiliates on accurate billing and charge reconciliation to avoid denials and claim resubmissions
- Develops process improvement initiatives to reduce billing inefficiencies or inaccuracies



Ellen Secaras, MBA, RPh
Corporate Director of
Pharmacy Systems
Integration



Berna Sweeney, CPhT
Senior Pharmacy
Reimbursement
Specialist, Corporate
Pharmacy

Integrated Service Line



Home Infusion
A Division of the

Pharmacy Enterprise | RWJBarnabas HEALTH

Qualitas Home Infusion is a wholly owned pharmacy and nursing service company of RWJBarnabas Health. It is accredited by The Joint Commission, URAC and ACHC delivering medications, nutritional support, infusion pumps and supplies as well as comprehensive education and infusion therapy management to patients in need of home infusion therapy. Home infusion therapy offers a convenient, cost-effective alternative to lengthy hospital stays or frequent outpatient infusion visits. It enables our patients to remain active and independent as they receive therapy in the comfort of their own homes on a schedule that works for them. The expert team of specially trained clinical pharmacists and verified IV registered nurses deliver the highest level of care, with comprehensive, innovative and progressive treatment plans for patients of all ages. Qualitas has board certified pharmacists for sterile compounding on staff.

Service Include:

- Comprehensive assessments and educational materials with individualized patient and caregiver training
- Highly skilled pharmacists coordinate care with physicians to determine appropriate TPN formulas, drug dosages and can customize sterile compounds in our state-of-the-art clean room for the safest, most precise treatment regimens
- Therapies that are coordinated by the pharmacy staff are: total parenteral nutrition, antibiotic, antifungal, antivirals, chemotherapy, pain management, hydration, inotropic therapy, antiemetic and enteral therapy
- Free, dependable same day delivery of medication and supplies to the patients' home, office or other designated location, with inventory monitoring to ensure ample supplies
- Reimbursement specialists handle all insurance verifications, authorizations, claims and billing
- Office hours Monday through Friday from 8:30AM to 5:00PM
- 24-Hour On Call Nurse and Pharmacist for any issues
- Bilingual staff and on-call translators to help to ensure that our non-English speaking patients fully understand their therapy regimens

Therapies Provided:

Caring, knowledgeable staff of IV, PICC certified, CRNI and Oncology certified nurses have years of experience in all aspects and genres of home infusion care. Our nursing staff works with patients to help them comfortably transition from hospital to home infusion administration delivering one-on-one, customized patient education and hands-on training. Regular home visits to monitor patient progress throughout their therapy, and provide ongoing clinical care, assessment and maintenance of intravenous sites and equipment

- Medtronic Pump Refills and Reprogramming
- Central Line Care
- Peripheral Catheter Care
- Port-A-Cath Care
- IM and SubQ Injections
- Midline Insertion



Suzanne Sesta, RPh, BCSCP
Vice President of Qualitas Pharmacy Services



Anita McNeill, RPh, BCSCP
Director of Pharmacy, Qualitas Pharmacy Services



Bonnie Boyle
Intake Supervisor, Qualitas Pharmacy Services



Fernando Oliveira
System Director of Pharmaceutical Procurement, Qualitas Pharmacy Services



Mary Pulidore, RN
Nurse Manager, Qualitas Pharmacy Services



Lisbeth Ruiz
Reimbursement Manager, Qualitas Pharmacy Services



Jolly Shah
Clinical Technician Supervisor



Ralph Burgos, RN
Supervisor

Nakia Kandas, R.Ph
IV Supervisor, Qualitas Pharmacy Services

Integrated Service Line



Purpose Statement

The purpose of the Pharmacy Informatics Division is to evaluate, integrate, standardize and build medication requests affecting our clinical information systems and technologies.

Mission Statement

The mission of the division is to ensure that any medications built within the clinical systems are accurate, standardized and compliant with quality standards, regulatory and accreditation bodies.

Who We Are

The team is headed by the Chief Health Information Officer, co-led by the Vice President of Clinical and Ancillary Applications, the Deputy Chief Information Officer and the Corporate Director of Pharmacy Systems Integration (Corporate Pharmacy) and supported by the Director of Pharmacy Informatics, Director of Clinical Applications and ECIS Pharmacy Systems Analysts.

How We Accomplish Our Mission

Our team accomplishes our objectives by leveraging and optimizing functionality of the enterprise clinical information systems including but not limited to creating and modifying medication orderables, order sentences, order sets, alerts, formulary maintenance and systems validation. We work in partnership with departments across the acute care service lines and integrated service lines to ensure standardization, optimization and quality assurance.

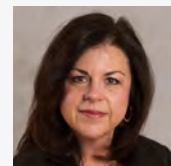
Duties/responsibilities

The Pharmacy Informatics Division operates under a hybrid structure within the Corporate Pharmacy and Enterprise Clinical Information Systems (ECIS) departments. The division's duties and responsibilities are established by affiliate needs as well as system-wide strategies.

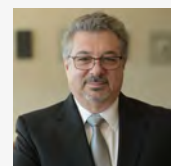
- Recommends enhancements to improve clinical patient safety and operational efficiencies
- Ensures consistent build across various ECIS platforms on new pharmacy informatics initiatives
- Maintains and updates formulary in clinical and pharmacy information systems
- Continuously upkeeps formulary build in the automated dispensing cabinets (ADCs)
- Creates medication-related data analytics tools to identify areas of opportunity
- Ensures data exchanges and downstream feeds are functioning appropriately
- Communicates and educates affiliate pharmacy departments on new initiatives or changes to ECIS systems



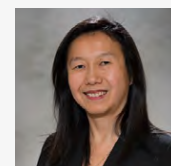
Stephen O'Mahony, MD, FACP
SVP & Chief Health Information Officer



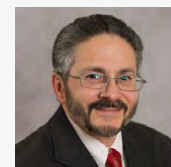
Barbara Boelter, RN, MHA
Vice President of Clinical and Ancillary Applications



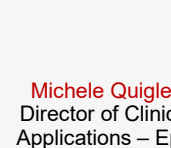
Angelo Schittone
Deputy Chief Information Officer



Ellen Secaras, MBA, RPh
Corporate Director of Pharmacy Systems Integration



Richard Hilway, RPh
Director of Pharmacy Informatics, ECIS



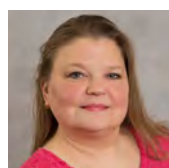
Michele Quigley
Director of Clinical Applications – Epic



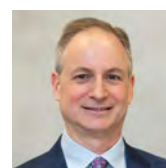
Alfredo Balleras, RPh
Lead Application Analyst, Epic Willow, ECIS



Larry Burnstein, BA
ECIS Pharmacy Analyst



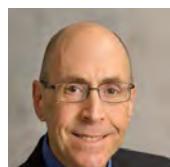
Melissa Crossen, PharmD
ECIS Pharmacy Systems Administrator, Application Analyst Willow



Steven DePaolo, RPh
ECIS Pharmacist



Samuel Gerena, PharmD, MPH
ECIS Clinical Pharmacist, Application Analyst-Willow



Steven Kravetz, PharmD
ECIS Pharmacist, Application Analyst-Willow



Ted Lee, RPh
ECIS Pharmacist, Application Analyst-Willow



Barry MacNeil, RPh
ECIS Pharmacist



Pallavi Nagarkar, RPh
ECIS Pharmacy Analyst,
Application Analyst-Beacon



Fred Penn, RPh
ECIS Pharmacist



Daniel Pung, PharmD
Pharmacist, ECIS

Integrated Service Line

Pharmacy Enterprise Mail Order Division



LSC Mail Order Pharmacy

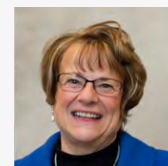
The Mail Order Division is a wholly-owned pharmacy services company of RWJBarnabas Health. It has provided excellent pharmacy services to RWJBarnabas Health employees and dependents since 2012. Our division is a state-of-the-art dispensing facility with multiple quality checks for safety and accuracy.

LSC Mail Order Pharmacy is RWJBarnabas Health's home delivery pharmacy service.

The RWJBarnabas Employee Health Plan requires that long-term maintenance medicine are filled through home delivery or an onsite pharmacy. The pharmacy experts at LSC Mail Order are working hard to make the medicines more affordable, and your experience easier.

Avoid Paying Full Price for Your Long-Term Medicines

RWJBarnabas Health's LSC Mail Order Pharmacy will help you get the medicine that you need to feel better and live well. The pharmacy experts at LSC Mail Order are working hard to make your medicine more affordable, and your experience easier.



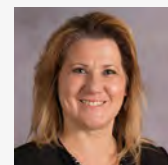
Suzanne Sesta, RPh, BCSCP
Vice President of
Qualitas Pharmacy
Services



Ronald Simbulan, RPh
Director of Pharmacy,
Qualitas Specialty and
Mail Order Pharmacy



Fernando Oliveira
System Director of
Pharmaceutical
Procurement, Qualitas
Pharmacy Services



Sharon Bednarz, CPhT
Pharmacy Technician
Manager, Qualitas
Specialty and LSC Mail
Order Pharmacy

Integrated Service Line

Qualitas Specialty Pharmacy

Qualitas Specialty Pharmacy is a wholly-owned specialty pharmacy services company of RWJBarnabas Health focusing on high cost, high touch medication therapies for patients with complex disease states. We offer complete specialty care, with a range of medications, therapies and services to manage conditions easier.

Medications in specialty pharmacy range from oral to cutting edge injectable and biologic products. The disease states treated range from cancer, hepatitis, HIV, multiple sclerosis, rheumatoid arthritis, transplant, to rare genetic conditions. The Specialty Pharmacy Division holds accreditations with Joint Commission and Utilization Review Accreditation Commission (URAC) and ACHC. These accreditations differentiate our organization from other healthcare providers exhibiting distinction. We also have board-certified specialty pharmacists on our staff.

Services Provided

Our experienced specialty trained pharmacists and nurses understand the complexities of our patients' conditions and are available to offer support including:

- Injection training
- Medication side-effect management
- Appropriateness of therapy assessment
- Periodic assessments and reassessments
- Ongoing monitoring for safety and efficacy of prescribed medicines
- Financial Assistance
- 24-hour on call pharmacist and nurse
- Free delivery of medications

Insurance Coordination

- Most specialty prescriptions require prior authorization
- Insurance experts coordinate with the patient's physician and health plan to facilitate the process



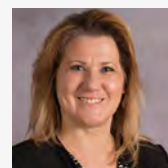
Suzanne Sesta, RPh, BCSCP
Vice President of
Qualitas Pharmacy
Services and LSC Mail
Order



Ronald Simbulan, RPh
Director of Pharmacy,
Qualitas Pharmacy
Services and LSC Mail
Order



Fernando Oliveira
System Director of
Pharmaceutical
Procurement, Qualitas
Pharmacy Services



Sharon Bednarz, CPhT
Pharmacy Technician
Manager, Qualitas
Specialty and LSC Mail
Order Pharmacy



Connie Ho, PharmD, MBA
Clinical Coordinator

Integrated Service Line

The Centralized Pharmacy Warehouse provides non-compounded products to all RWJBH hospitals. The Centralized Warehouse model allows for the procurement of bulk, reduced- cost purchases and the direct purchases of products on national shortage. Direct purchases prevents interruptions in supply chain management and patient care.

Specific products are brought into the warehouse as needed based on mitigation for future possible supply interruptions and prior to known price increases. Smart bulk purchases lead to large cost savings to the RWJBH system.

In 2021, the Centralized Warehouse continued to be crucial in support of the RWJBH hospitals during the COVID-19 pandemic response. Through key partnerships and direct account setup with manufacturers and vendors, the warehouse was able to procure essential pharmaceuticals needed by the RWJBarnabas Health System. The system was able to maintain extra stock and take advantage of the warehouse space in South Plainfield.

Through these strategic purchases, the system was able to continue uninterrupted patient care to all of it's COVID patients.

In addition to the COVID-19 related support, 2021 also saw over \$9.3 million dollars worth of cost-savings pharmaceutical purchases through the Centralized Warehouse. In addition to the bulk cost savings purchases, the Centralized Warehouse was able to provide another \$7.4 million dollars worth of products that were not available through our wholesaler and on shortage.

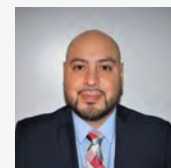
For 2022, our plan is to continue expanding this model with smart cost-savings purchases that will bring tremendous overall benefit to RWJBH.



Fernando Oliveira
System Director of
Pharmaceutical
Procurement



Bryan McCormick,
CPhT, MBA
Corporate Director 340B
Program, Corporate
Pharmacy



Michael Malaga
Supervisor, Qualitas
Pharmacy Services

Integrated Service Line

**Barnabas Health
Retail Network**

**RWJBarnabas
HEALTH**

Community pharmacists are responsible for a variety of patient-centered activities including but not limited to dispensing prescription and non-prescription medications, educating and counseling patients, screening for and providing vaccinations, identifying and addressing potential drug interactions, and optimizing patient care. Community pharmacists must work within legal and ethical guidelines set by many different regulatory agencies, including the State Board of Pharmacy, Drug Enforcement Administration, Food and Drug Administration, and third-party payers.

The Barnabas Health Retail Pharmacy network currently operates eight pharmacies that offer convenient prescription services to the general public, patients, and employees. Our on-site pharmacies offer our patients a convenient method to address their discharge medication needs after doctors' appointments, clinic visits, outpatient procedures, and inpatient hospitalizations. Our complimentary bedside medication delivery service by our pharmacy discharge advocates provides patients a more efficient transition during discharge. In addition, this service allows our professional staff to educate patients on the importance of medication adherence and address any questions or concerns that patients may have prior to discharge. Our pharmacies also carry a comprehensive line of specialized medications and devices to meet the needs of our discharge populations and hospital programs.

This past year, the retail pharmacy enhanced its clinical services, opened a new retail location in Bayonne, expanded immunization services at the Greenville location, and went live on Epic Willow Ambulatory at Cooperman Barnabas Medical Center. The Dispensary of Hope program, which improves medication access to under-served populations by providing donated medications at no charge, was maintained at five retail locations. During 2021, many outreach programs transitioned back to in-person while continuing virtual and telephonic sessions with educational programs including preventive medicine, medication safety, vitamins and supplements, and COVID-19 vaccine updates.

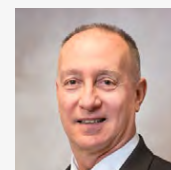
The retail pharmacy intends to build upon its robust patient care and clinical service programs in 2022. Initiatives include maximizing EPIC's retail platform features, increasing immunization awareness, expanding immunizing services, optimizing third-party reconciliation receivable procedures, and improving medication access to under-served populations across the health system with the Dispensary of Hope.

Patient-centered community outreach education and screening programs

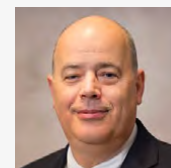
- Bethany Senior Center – Newark, NJ
- Bloomfield Public Library - Bloomfield, NJ
- Friday Friends – Millburn, NJ
- Livingston Senior Center – Livingston, NJ
- Millburn Life Lighters – Millburn, NJ
- NJ Reentry Corporation – New Brunswick, NJ
- Old Guard Senior Citizens of Livingston – Livingston, NJ
- Senior Center of the Chatham – Chatham, NJ
- Senior Wellness Connection (NBI) – Newark, NJ
- Village at Garwood Seniors – Garwood, NJ
- Westfield Senior Housing – Westfield, NJ

Additional services offered by our pharmacy network include

- Tailored clinical services based on individual facility needs
- Bedside medication delivery prior to discharge
- Prescription delivery to your home (some restrictions may apply)
- Adult Immunizations (where available)
- Popular generic prescription plans offered (\$4 for 30 days, \$10 for 90 days on select generic medications)
- Individualized medication consultation available on every prescription
- Naloxone Public Access Program in collaboration with NJ Department of Health
- Computerized year-end tax records and insurance receipts
- Healthcare Provider In-service Education
- Over-the-counter (OTC) medications available with a 20% discount to all employees
- Flexible Spending Accounts (FSA) cards accepted
- Charity Care Prescription Programs
- Contracted pharmacy to our 340B hospitals
- All major insurance plans accepted: NJ Medicaid, CVS/Caremark, Horizon BC/BS of NJ, Express Scripts, Horizon NJ Health, Optum Rx, and Medicare Part D Plans
- Support care transitions, adult immunizations, medication adherence, and medication therapy management (MTM)



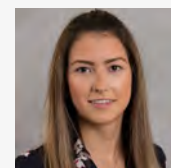
Robert Pellechio, RPh, MPA
Corporate Vice President of
Integrated Services



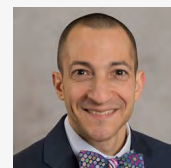
Joe Voelkel, RPh
Assistant Vice President,
Retail Pharmacy Network



Shawn Lynch, RPh
Pharmacist Senior
Manager, Retail
Pharmacy Network



Monika Stachura, CPhT
Pharmacy Coordinator,
Retail Pharmacy Network



Lucio Volino, PharmD
Clinical Pharmacist
Retail Network and
Clinical Associate
Professor, Ernest Mario
School of Pharmacy,
Rutgers University

**Barnabas Health
Retail Network**

Maryan Andrawis, PharmD
Pharmacist in Charge,
Newark Beth Israel Medical
Center Retail Pharmacy



**Christopher Cilderman,
PharmD**
Pharmacist in Charge, Clara
Maass Medical Center Retail
Pharmacy



Cathy King, PharmD
Pharmacist in Charge,
Cooperman Barnabas
Medical Center Retail
Pharmacy



**Cynthia Laracuenta,
PharmD**
Pharmacist in Charge,
Monmouth Medical Center
Retail Pharmacy



Kanakis Markakis, RPh, FACA
Pharmacist in Charge,
Jersey City Medical Center
Retail Pharmacy



Maileen Simbulan, RPh
Pharmacist in Charge, Retail
Pharmacy at Greenville



Mabel Vidal, RPh
Pharmacist in Charge,
Ambulatory Care Center Retail
Pharmacy

Integrated Service Line



New Jersey's only National Cancer Institute (NCI) – designated Comprehensive Cancer Center, Rutgers Cancer Institute of New Jersey's team of internationally recognized physicians and researchers is driven by a singular focus and mission, to help individuals fight cancer. Through the transformation of laboratory discoveries into clinical practice, we target cancer with precision medicine, immunotherapy and clinical trials and provide the most advanced, comprehensive, and compassionate world-class cancer care to adults and children. This mission is being accomplished in partnership with RWJBarnabas Health. Rutgers Cancer Institute physicians and scientists work side-by-side to make sure the most sophisticated treatments are delivered to our patients quickly and safely - the future of cancer treatments today.

In 2021, Rutgers Cancer Institute

- Cared for nearly 55,000 outpatient clinic visits to the center,
- Treated over 25,000 patient treatment-visits to Adult Infusion and Pediatric Infusion.
- Dispensing more than 83,000 doses

Of these treatment-visits, 11.3% (or 2862) of patient visits involved a patient enrolled onto a therapeutic clinical trial.

To support these service, Rutgers Cancer Institute of New Jersey employs:

- 7 Board Certified Oncology Pharmacist supporting clinical care
- 7 PharmDs supporting the infusion center operations and cleanroom
- 7 Certified Pharmacy Technicians (CPhT) with certification in Compounding Sterile Preparations (CSPT)

Researchers from Rutgers Cancer Institute have made outstanding scientific contributions towards the national goal of reducing the incidence of cancer and improving the outcomes for cancer patients. Rutgers Cancer Institute coordinates basic, clinical and population research through five comprehensive research programs comprised of faculty who form cohesive, interdisciplinary groups supported by peer-reviewed grants and Rutgers Cancer Institute shared resources. Close to 250 Rutgers Cancer Institute faculty members garner more than \$100 million annually in federal, state and philanthropic grant support.

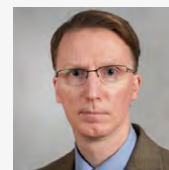
Rutgers Cancer Institute of New Jersey is a part of Rutgers Health, one of the most comprehensive academic health care provider organization in New Jersey, offering a breadth of accessible clinical care throughout the State supported by the latest health-related research and education. Rutgers Health connects health care providers across disciplines, including doctors, nurses, dentists, physician assistants, pharmacists, clinical psychologists and social workers, with a single focus: helping people and populations get well and stay well by delivering consistent, coordinated, value-based health care.

As oral chemotherapeutic agents become used more readily for the care of cancer patients, Rutgers Cancer Institute of New Jersey, Research Pharmacy along with Qualitas Specialty Pharmacy are working in conjunction to better the patient treatment experience. The goal of this Oral Oncolytic program (Specialty Rx Access) is to dispense specific medications to patients so as to reduce the cost of filling unnecessary medications, reduce distribution costs, ensure patient safety and adherence, and to comply with risk evaluation and mitigation strategy programs. To overcome the traditional, specialty pharmacy model as stand-alone or mail-order operations with no affiliation with the patient's practice-based oncology care team, our Health-System now has an internal specialty pharmacy services, which are highly integrated with the patient's oncology care team. This model matches best practice in the literature described as a closed-loop collaboration between the oncology practices and an internal specialty pharmacy access programs and results in positive clinical outcomes as well as both patient and provider satisfaction. The model includes two full-time pharmacists and 1 technician within the Cancer Institute and 1 dedicated FTE at Monmouth Medical Center and Newark Beth Israel Medical Center. This service has grown to a \$27mil revenue generating program locally and a \$47mil revenue generating program when including all RWJBH sites under the oncology service line.

The Pharmacy at Rutgers Cancer Institute of New Jersey is also an NCI Comprehensive Cancer Center Shared Resource that provides support for Rutgers Cancer Institute of New Jersey members who conduct research with investigational agents in human subjects. The overall goal of this shared resource is to support the rigorously reviewed Rutgers Cancer Institute's clinical research by providing an efficient, centralized service of extraordinary quality.

The specific goals of this shared resource are to:

- Develop and maintain proper methods for preparation and handling of investigational agents
- Ensure that all issues involving drug accountability, dosing, and administration are (a) clearly defined in the protocol; (b) consistent with Rutgers Cancer Institute, State, and Federal policies and procedures; and (c) followed to ensure the proper use of all study agents in clinical trials
- Facilitate procurement, maintain accountability, and provide secure and appropriate storage for all investigational agents, and ensure that these agents are dispensed according to protocol guidelines; for the basic science programs, the Research
- Pharmacy shared resource procures investigational and commercial agents for laboratory use Assist Cancer Institute investigators, along with the Rutgers Cancer Institute of New Jersey's Office of Human Research Services (OHRs), in maintaining regulatory compliance
- Provide expert consultation on the use of new agents regarding drug interactions, sequencing, formulation and administration



Michael P. Kane,
RPh, BCOP
Executive Director,
Oncology
Pharmacy Services



Fuwing Lee, RPh, MPA,
MSHI
Clinical Pharmacist
Specialist, Informatics

Paul Auriemma, PharmD,
MBA, BCOP
Assistant Director
Oncology Pharmacy
Services

Christian Gabel, PharmD
Pharmacist Manager,
Investigational Drug
Services

Integrated Service Line

- Provide an additional level of quality assurance in clinical trials through a) verification of informed consent; b) verification of eligibility and enrollment through the OHRS before dispensing any agent to clinical trial participants; c) verification of dose assignments in phase I trials; d) verification of investigators' active National Cancer Institute (NCI) status; e) review of dose modifications; f) assessment for potential drug interactions; g) maintenance of randomization schemas for investigator-initiated trials; and h) assessment of patient adherence for self-administered protocol therapy

Preparation and Handling for all Investigational Agents: The shared resource develops methods and manages the preparation and delivery of investigational agents in a USP 797/800 compliant clean room. Policies and procedures are in place that ensure (1) proper storage, handling, and dispensing of investigational agents according to protocol; (2) dose modifications occur as described in the protocol; and (3) all federal and state regulatory requirements are met. It also develops policies for the management of investigational agents used in Cancer Institute multicenter trials through the RWJBarnabas Partnership of hospitals and our Affiliates for clinical trials. All policies and procedures are based on NCI guidelines and the recommendations of the Research Pharmacy Advisory Committee.

Drug Accountability, Dosing, and Administration: All protocols are reviewed by the shared resource before submission to the Institutional Review Board (IRB) to ensure that drug accountability, preparation, dosing, and administration are clearly defined. This helps to minimize the risk of medication errors and protocol deviations. Policies and procedures are in place in the shared resource to ensure drug accountability to supplying agencies.

Procurement: The shared resource works with principal investigators and sponsoring organizations to coordinate the procurement of Investigational drugs. Upon receipt of the investigational agent, all shipping documents are verified against materials received, lot numbers, and expiration dates. It also obtains, tracks, and supplies commercial agents for clinical trials and for laboratory use by Rutgers Cancer Institute members.

Storage and Security: All investigational agents are stored in the shared resource area, which is double locked at all times, and is accessible only by licensed staff members. There is adequate, room-temperature storage space, refrigeration, and freezers (one -30oC and two -86oC). Monitoring of these temperatures occurs every ten minutes and is documented with SmartVue™, a wireless remote temperature monitoring system with daily backup to the Rutgers Cancer Institute's server.

Dispensing: Research Pharmacists directly oversee the handling of investigational agents and ensure that preparation of agents is performed according to the respective protocol and accordance with FDA and NCI guidelines for investigational drug use. The staff is responsible for verifying study agents are dispensed only for patients on IRB-approved clinical trials, the most up-to-date informed consent is signed by both the patient and an approved investigator, patient eligibility and has been enrolled by OHRS via Oncore®. The pharmacy staff in collaboration with OHRS develops CPOE order-entry for each protocol. All medication orders are cross-referenced to the protocol for verification of dosing, dosing modification, laboratory data, toxicity information.

Drug Accountability: Drug accountability is performed as outlined in the NCI Drug Accountability guidelines. The Department recently expanded to incorporate Vestigo® for drug accountability documentation and are in the process of roll-out across the Health-System.

Expert Consultation for Clinical Trial Development: Occurs during the development of clinical trials. The staff focuses on the development of exclusion criteria for concomitant medications that may interact with the protocol agent, dose modifications for renal, pulmonary, liver or cardiac function based on the preclinical toxicity profile of a new agent for a phase I trial and collaborate on the sequence of administration of protocol agents in the treatment plan. Supportive care medications on investigator-initiated trials are developed and weekly Phase I Group meetings and in protocol activation meetings to continuously and prospectively address these issues.

Drug Formulation: The shared resource has the capacity to formulate and handle new agents including biologicals (e.g., Coxsackievirus A21, talimogene laherparepvec, PANVAC, fowlpox vaccines) and natural products (e.g., tocopherols). The shared resource staff works with OHRS and sponsoring regulatory agencies to achieve approval of new formulations. It also works with institutional safety committees to make sure that each potentially hazardous compound or agent is handled and dispensed in compliance with Good Clinical Practice (GCP) and in concordance with all safety procedures for the agent.

Quality Assurance: The shared resource is responsible for ensuring that all study agents are dispensed only for patients on IRB-approved clinical trials and only after the most recently IRB-approved consent form has been signed by both the patient and an approved investigator. Staff also verifies that a signed and dated consent form is in the chart, re-verifies patient eligibility, and confirms with OHRS that the patient is enrolled onto a study before dispensing a protocol agent. Additionally, a pharmacist obtains a comprehensive medication history from the patient to minimize the risk of adverse drug interactions.

All the IRB-approved investigator-initiated clinical trials are first translated into the EMR by the OHRS Clinical Trials Informatics Specialist and then all investigational agents are inputted by the Informatics Pharmacist and verified by the shared resource.

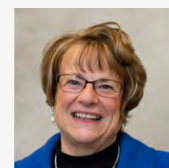
For randomized, investigator-initiated clinical trials, the shared resource obtains the randomization schema from the Biometrics shared resource. It also performs the randomization and maintains the randomization codes for possible decoding in the event of a medical emergency.

Research Pharmacy Services for Multicenter Investigator-Initiated Clinical Trials: For network trials conducted at network institutions, the shared resource is responsible for inspecting the pharmacy at these sites and training their staff.

Integrated Service Line

RWJBarnabas Consolidated Pharmacy Services

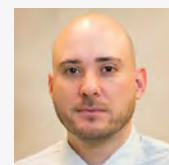
RWJBarnabas Consolidated Pharmacy Services is a wholly owned pharmacy service company of RWJBarnabas Health. It is a centralized pharmacy providing system hospitals with quality sterile products. It was created to help control costs for the system by consolidating job functions, reducing waste and passing on just costs to the system hospitals. RWJBarnabas Consolidated Pharmacy Services began in 2004 providing TPN for both adult and NICU inpatients. In 2009, Qualitas added compounding small and large volume sterile medications to its services, continuously adding products for the system hospitals upon request. In 2013, it started providing barcoded repacking services for oral medications that are not available in unit dose as part of a strategic plan to barcode medications in preparation for conversation to bedside barcode medication administration at all of our acute care facilities. Qualitas is leading the sterile products collaborative, standardizing policies and monitoring USP 797/800 compliance.



**Suzanne Sesta,
RPh, BCSCP**
Vice President of
Qualitas Pharmacy
Services



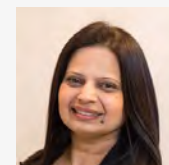
**Anita McNeill, RPh,
BCSCP**
Director of Pharmacy,
Qualitas Infusion and
Hospital Services



Andres Barcello
Sterile Products
Manager



Fernando Oliveira
System Director of
Pharmaceutical
Procurement, Qualitas
Pharmacy Services



Jolly Shah
Supervisor



Actively Seeking Excellence

2021 Summary

- 01 Advocacy
- 02 Community
- 03 Education
- 04 Financial
- 05 Quality & Safety
- 06 Research & Publication

Advocacy

The **RWJBarnabas Health** Pharmacy Enterprise is an integrated part of the health care team. Pharmacists are responsible for ensuring safe, effective, and appropriate medication use for all patients

In 2021, the Acute Care Service Line workload statistics include:

- The team prevented more than 89,000 adverse reactions
- The team intervened and prevented in excess of 207,900 medication errors from occurring
- There were more than 33.8 million doses dispensed
- The number of medication orders verified was more than 7.2 million
- The median turn around time to process a STAT order was 6 minutes
- There was a 8 minute median turn around time to process a routine order
- The pharmacists performed more than 2.72 million clinical activities
- The pharmacists performed in excess of 388,065 laboratory assessments
- The pharmacy technicians performed more than 532,300 activities
- Performed greater than 61,300 Antibiotic Stewardship activities
- More than 118,700 patients were seen directly by a pharmacist
- More than 6,800 ambulatory activities performed by a pharmacist

Members of our team were named to a state or national organization and editorial board leadership positions:

ASHP

- AJHP Reviewer
- Council on Pharmacy Management - Co-Chair
- Clinical Leadership Section Advisory Group - Chair
- Value, Quality and Compliance Section Advisory Group - Co-Chair
- CV Reviewer
- PGY1 Program Reviewer (two)
- PGY2 Program Reviewer (one)
- Poster Reviewer
- Standardize 4 Safety Initiative Expert Panel
- Senior Editor Clinical Pharmacology
- Multi-hospital Pharmacy Executives Committee
- Pediatric Section Advisory Group
- New Jersey Delegate to ASHP

NJSHP

- Educational Affairs
- Annual Meeting Planning Committee
- Council on Public Policy

ACCP

- Board Member
- Faculty Member
- Educational Affairs
- CV Reviewer

- Adult Medicine PRN Poster Reviewer
- Adult Medicine PRN Walk Rounds Committee Member
- Fellow

American Society of Consultant Pharmacists

- Fellow

American College of Cardiology

- Associate Appointment
- State Liaison for the NJ Chapter

American Association of Colleges of Pharmacy (AACP)

- Abstract Reviewer
- Poster Competition Judge
- Lab Sig Programming Committee
- Laboratory Instructors Special Interest Group
 - Chair-elect
 - Chair
 - Resolutions Committee Chair
 - Programming Committee Chair
 - Mentoring Program Mentor

American Association of Colleges of Pharmacy Laboratory Instructors Special Interest Group

- Chair-elect
- Chair
- Resolutions Committee Chair
- Programming Committee Chair

Advocacy

American Pharmacists Association

- Abstract Reviewer
- Poster Competition Judge
- Immunizing Pharmacists Special Interest Group
 - Webinar Task Force Co-chair

Heart Failure Certification council

- Member

National Academies of Practice

- Fellow

New Jersey Pharmacists Association

- New Jersey Delegate to APhA
- Membership Committee Member

New Jersey Reentry Corporation (NJRC)

- NJRC Program Ambassador

Pediatric Pharmacy Association

- Chair, Legislative Affairs Sub-Committee

Rho Chi Society

- President-Elect
- Awards Committee Chair
- Awards Task Force Chair
- Centennial Planning Task Force Member
- Town Hall Task Force Member

Society of Critical Care Medicine

- Accreditation and Learning Strategies Committee
- Board Appointment

Trans-Atlantic Renal Council

- Board of Trustees

The Acute Care Service Line consists of **455 pharmacists, 349 pharmacy technicians and more than 11 support staff**. Our acute care pharmacy team is deployed both centrally and de-centrally. The inpatient decentralized model operates to verify orders on the patient care units, and attending rounds and counseling patients. The decentralized model is supported by computerized prescriber order entry (CPOE), automated dispensing cabinets (ADC) on the units, and bed-side barcode medication administration. Technicians support the decentralized pharmacists by restocking the ADCs and delivering non-stocked medications to the units from the central pharmacy. In the central pharmacy, the technicians assist pharmacists by answering phones, filling labels, compounding and picking medications, and performing deliveries. Centralized clinical pharmacists answer phones, verify orders, and oversee technician activities and sterile product compounding.

Advocacy

The **RWJBarnabas Health** Pharmacy Enterprise encourages all teammates of all roles to pursue advanced certifications within their respective area of practice. These certifications are not required but are obtained by our teammates due to the self motivation to continuously improve their skill sets they offer our patients and fellow practitioners.

Certifications in 2021:

- Seventeen teammates achieved Board Certification in 2021
- There are currently 158 teammates who currently are board certified in one of the following and 30 teammates hold more than one of the following:
 - AQCD, BCACP, BC-ADM, BCCCP, BCCP, BCGP, BCIDP, BCOP, BCPP, BCPPS, BCPS, BCSCP, BCTXP, CACP, CHSE, CPHT, CSP
- The RWJBarnabas Health Pharmacy is proud of our teammates who have pursued these certifications and offer this expertise to our patients, families and fellow practitioners. In fact, 36% of all pharmacists in our Enterprise are Board Certified Pharmacy Practitioners

Advocacy

The Qualitas Pharmacy Division consists of **31** pharmacists, **47** pharmacy technicians, **37** support staff and **37** nurses

Qualitas Home Infusion Division

The Qualitas Home Infusion Division delivers medications, nutritional support, infusion pumps and supplies as well as comprehensive education and infusion therapy management to patients in need of home infusion therapy.

- Our nurse colleagues performed 25,894 home visits to our patients
- The division made and administered in excess of 106,848 intravenous medications
- Home infusion division achieved a 0.02 % infection rate per 1,000 patient days
- The Acute Care Service Line referred 6,082 patients to our service
- The Home Infusion division provided 1,804 days of free care for patients from our system

RWJBarnabas Consolidated Pharmacy Services Division

The RWJBarnabas Consolidated Pharmacy Services Division delivers medications, nutritional support, infusion pumps, and supplies as well as comprehensive education and infusion therapy management to patients in need of home therapy.

- Our pharmacy team prepared and delivered more than 264,180 intravenous medications for the acute care service line
- There were in excess of 18,263 Total Parenteral Nutrition intravenous preparations made and delivered to our Acute Care Service Line
- Our service repackaged for the Acute Care Service Line over 628,533 tablets of medications into unit dosage forms because they were not commercial available
- Our service repackaged for the Acute Care Service Line more than 102,939 doses of liquid medications into unit dosage forms because they were not commercially available
- By utilizing this division in lieu of outsourcing and centralizing purchasing, the Health System saved **\$9,652,766**

Qualitas Home Mail Order Division

The Qualitas Mail Order Division delivers and provides superior service and support for RWJBarnabas Health employees and dependents, ensuring appropriate therapy

- Our mail order division filled more than 73,980 prescriptions for employees and their families
- The mail order division coordinated more than 3,160 deliveries averaging 9 driver deliveries a day
- The division filled over 1,044 340B prescriptions, averaging 3 prescriptions a day
- By utilizing this division in lieu of outsourcing to a chain pharmacy, the health system saved **\$2,784,007**

Advocacy

The Qualitas Pharmacy Division consists of **31** pharmacists, **47** pharmacy technicians, **37** support staff and **37** nurses

Qualitas Specialty Pharmacy Division

The Qualitas Specialty Pharmacy Division offers a comprehensive therapy management service that focuses on providing high cost, high touch medication therapy for patients with complex disease states. Our pharmacy offers complete specialty care with a range of medications, therapies and services to manage conditions easier. Medications in specialty pharmacy vary from oral to cutting edge injectable and biological products. Our goal is to achieve superior clinical and economic outcomes while maintaining the utmost compassion and care for our patients.

- Our dedicated team filled more than 89,032 for our patients
- The team made in excess of 29,141 deliveries to our patient's homes
- The division averages approximately 341 prescriptions on a daily basis
- Our health system referred 507 transplant patients to our service
- This division filled 17,741 specialty 340B scripts
- By utilizing this division, the health system saved \$28,617,046 in 340B dollars
- The disease states managed under our care are:
 - Heart Transplant
 - Hepatitis C
 - Kidney Transplant
 - Lung Transplant
 - Oncology
 - HIV

Advocacy

Pharmacy Reimbursement Division

The Pharmacy Reimbursement Division (PRD) consists of a team of individuals with expertise in medication billing and reimbursement.

- Recovered over \$4.3 million in 2021 and \$46.5 million since program inception for the Acute Care Service Line, all through dedicated review and incorporation of existing clinical, reporting and surveillance applications
- Reviewed and ensured medication billing on over 5,200 billing, coding, charge capture and reconciliation activities
 - Additions/deletions/changes to billing set-up for formulary items
 - Quarterly and annual medication HCPCS updates for both Heritage RWJ and Barnabas Health acute care facilities
 - NDC requirements submitted for Medicaid/Managed Medicaid claims
 - Payor, billing and reimbursement audits after go-lives
- Recovered almost \$400,000 of inpatient hemophilia reimbursement
- Ongoing monitoring and monthly waste billing analysis to determine actual billing versus waste opportunity for RWJBarnabas Health affiliates
- Created a standardized process which involved PRD, local pharmacy at the hospital, Billing and Managed Care, for payor invoice submissions. Since implementation in 2021, it has resulted in over \$243K in recoveries.
- COVID19 Monoclonal Antibody Daily Charge Reporting & Inventory Monitoring for RWJBarnabas Health system
- Pre & post Epic implementation SMEs for pharmacy billing & will continue for past and future Epic Waves; medication validation & build (coding information), work queue (WQ) build
- Worked with AllScripts and Cerner report writers, various reporting platforms and interface teams to develop a semi-automated process to capture non-PBM adjudicated claims for remuneration

Advocacy

Retail Pharmacy Network Division

The Retail Pharmacy Division members are responsible for dispensing and controlling medicine, which includes both prescription and non-prescription. They also advise customers on general healthcare topics. Retail pharmacists must work to meet legal and ethical guidelines set by many different regulatory agencies, including the State Pharmacy Board.

In 2021, the retail pharmacies dispensed 173,165 prescriptions, averaging 653 prescriptions per day, with a staff of 13 full time pharmacists. A total of 12,684 prescriptions were filled for 340B for a system benefit of \$1,392,225.

The Dispensary of Hope program, which improves medication access to under-served populations by providing donated medications at no charge, was maintained at five retail locations. The Dispensary of Hope is a non-profit drug distributor, whose mission is to transform lives by creating pathways for donated medicine to reach individuals in need and without access. Our system has the only retail pharmacies authorized to provide this program in the state of NJ.

The retail pharmacy network continues to build upon and improve its current services which include home delivery, text messaging pickup availability, and refill reminders. Pharmacies provide clinical services to support care transitions, adult immunizations, medication adherence, and medication therapy management (MTM). The retail pharmacy staff is also involved in community outreach programs, brown bag events, and blood pressure screenings. At Newark Beth Israel Medical Center, the retail pharmacy initiated and built programs with the departments of bariatric surgery, emergency, maternal fetal medicine, geriatrics and colorectal surgery.

In 2021, the retail pharmacy generated more than 24.5 million dollars in revenue with net benefit in excess of 1.4 million dollars.

In 2021, the retail pharmacies:

- Organized and provided 103 community outreach events at 15 different locations with 806 attendees
- Went live on Epic Willow Ambulatory at two retail pharmacy locations
- Maintain the Dispensary of Hope program at five retail pharmacy locations.
- Opened a new retail pharmacy location in Bayonne
- Expanded immunizations at the Greenville location
- Developed numerous disease state focus patient education materials

Advocacy

340B Drug Pricing Program Division

The 340B Program continues to meet its original goal of helping eligible patients and hospitals make the most of scarce resources while saving taxpayers money. The RWJBarnabas Health 340B covered entities are committed to caring for the vulnerable and use 340B savings to stretch otherwise limited resources to enhance services and increase access. For patients, this means affordable medications, expanded access to community-based primary and specialty care, and help managing chronic conditions. This program supports all these benefits while reducing federal, state, and local health care spending.

In addition to lower costs and affordable medications, our programs support better care and better health outcomes allowing us to provide more services and offset losses from providing care without compensation.

- Remained focused on elevating responsibilities related to auditing the hospital pharmacies and contracted pharmacies along with supplying compliance tools, 340B training and other support services.
- Transitioned the health system to a new 340B third party application to enhance program compliance, automation, and patient benefit.
- Performed audits of thousands of patient dispensations to ensure program eligibility.
- Helped the health system leverage Apexus contracts and purchasing strategies to continue the reduction of wholesale acquisition cost (WAC) spending. The health system finished 2021 with a WAC impact around -3%.

As federal dollars shift and resources become scarce, it is critical that health centers participate in programs like this that will continue to increase patient access and expand services. The 340B Program will enable health centers to increase access to affordable medication, which will ultimately improve outcomes, and assist in overcoming the impact of the decline in federal and state funding.

Advocacy

Pharmacy Informatics Division

Our Informatics Division made over 3,400 safety enhancements to our Enterprise Clinical Information Systems which serves as a foundation for all care providers when treating our patients. Many of the projects involved information technology changes toward the goals of standardizing builds, processes and workflows for the Pharmacy Enterprise.

In 2021, individuals from the division continued to participate in monthly alert committee call and ECIS Pharmacy Workgroup meeting led by our Chief Health Information Officer. The committee and workgroup offer an opportunity to optimize existing pharmacy build or provide recommendations for new medication-related builds to improve patient safety and workflow efficiencies.

Cerner and AllScripts (SCM) Optimization (implementations and/or enhancements)

- Over 300 Cerner PowerPlans
- 77 SCM Pharmacy Order Sets
- 150 SCM Quick Charges - created to allow manual medication charging
- 14 Nuisance Alerts – identified, reviewed and consensus to remove clinical decision nuisance alerts from heritage EHRs
- COVID-19
 - Medication/Orderable Build/Order Set
 - Monoclonal Antibodies (bamlanivimab/etesevimab, casirivimab/imdevimab, sotrovimab)
 - Vaccine Assessment Form Build, Employee Clinics, Public Vaccine Clinics, Mega Sites
 - SARS-COV2 Vaccines – primary series, immunocompromised, booster

Epic Willow Implementation

RWJUH Somerset went live with Epic in early October 2021. Pharmacists across the system helped with the backload the day before go-live.

- Cooperman Barnabas Health Retail Pharmacy Go-Live in October, 2021
- Continuing Pyxis Conversion Testing Rahway, Hamilton and New Brunswick
- Completed second inventory scan for CINJ, HAM, RAH, and NBR
- Investigational Study Build
 - 104 studies completed out of roughly 130
 - 552 new medication record created
- Completed approximately 550 Order Sets

2022 will focus on Wave 3 site builds along with patient safety optimizations.

The team was able to increase its support footprint and efficiency solutions for the health system through the following initiatives:

- AllScripts, Cerner and Epic ECIS Pharmacy teams
- Healthcare Analytics – continual development, maintenance or revisions to Cerner, AllScripts, Epic and financial billing systems reports for acute care service lines
- Creation of job aids to guide teammates in the most efficient way to utilize enhancements that have been made to the clinical information system
- Ongoing support and validation testing for Cerner, AllScripts and Epic code upgrades

Advocacy

Ambulatory Care Division

The Ambulatory Care Division consists of 9 pharmacists who act as health care extenders, offering services such as patient counseling, medication reconciliation, and chronic disease state management which can optimize medication use while reducing costs, side effects, and readmissions.

- More than 6,800 ambulatory care interventions were performed by the division
- The most common types of intervention categories include:
 - Transitions of Care
 - Patient Counseling
 - Laboratory Assessment
 - Modifying and Clarifying Therapies—including brand to generic change, cost, inappropriate dose, and efficacy
 - Value-Based Measures
 - Adherence counseling and diabetes management/self-monitoring
 - Medication classes most commonly assessed included cholesterol lowering medications, anticoagulants, anti-diabetic agents, and anti-hypertensives
 - The division is represented on the Patient and Family Advisory Councils to support aligning our treatments with patient needs

Community

Care Continuum

The RWJBarnabas Health Foundational Care Continuum strategy is centered around Transitions of Care.

Transitions of Care is defined as a set of actions designed to ensure the coordination and continuity of health care as patients transfer between different locations or different levels of care within the same location. Locations include hospitals, sub-acute and post-acute nursing homes, the patient's home, primary and specialty care offices, and long-term care facilities. Transitional care is based on a comprehensive plan of care and the availability of health care practitioners who are well-trained in chronic care and have current information about the patient's goals, preferences, and clinical status. It includes logistical arrangements, education of the patient and family, and coordination amongst healthcare professionals involved in the transition. The Pharmacy Enterprise has engaged in several activities to aid in the health system's overall strategy of Transitions of Care such as: patient medication counseling (inpatient and outpatient), home infusion of intravenous medications, and discharge medications filled and delivered to a patient's bedside prior to discharge.

The team has increased its presence in the area of care continuum. The following care continuum activities were completed in 2021:

- Excess of 25,910 medication reconciliations
- More than 1,400 discharge counseling sessions
- More than 16,649 medication histories
- In excess of 2,300 transition of care activities
- Our pharmacy team continued to extend their service outside of the Acute Care Service Line to physician office practices and clinics. In 2021, more than 1,362 activities in the physician practice setting were completed
- We continued our initiative at Cooperman Barnabas Medical Center where a pharmacist accompanies a nurse to perform home visits to ensure compliance with medications in order to prevent admission and readmission to the hospital
- Retail pharmacy Network Division's delivery service to patient's homes provided more than 187 deliveries representing 486 prescriptions
- The Meds to Beds program processed 6,457 prescriptions for 13,098 patients
- Our Qualitas Home Infusion Division nursing colleagues performed more than 25,894 home infusion visits
- Qualitas Home Infusion provided 824 hydration only visits on behalf of CINJ and RWJ New Brunswick, generating an additional \$318,353 revenue opportunity
- More than 6,800 ambulatory activities performed by a pharmacist

Community

Past polls have traditionally held pharmacists in high esteem for such characteristics as trust, ethics, and honesty. Creating access to pharmacist's unique medication knowledge base is a key focus for our community outreach programs. Improving the pharmaceutical care and disease state understanding should never stop at the doors of a hospital or doctor's office, but should extend into the community. The programs that were completed in 2021 helped to improve medication and disease state knowledge among patients within our community. Patient education is critical to improving their compliance with medications, understanding of disease states, and comfort in communicating with health providers.

The Pharmacy Enterprise provided over 288 community outreach programs in 2021 which included:

- Adopt a Family
- Annual Alma Beatty Health and Wellness Fair
- Better Breathers Outpatient Group
- Better Health Members
- Breast Cancer Awareness and Health Expo
- COVID vaccine outreach program
- Dispensary of Hope
- Mobile COVID Clinics
- Mobile COVID vaccine clinic at Elementary Schools
- Mobile COVID vaccine clinic at High Schools
- Mobile COVID vaccine clinics
- Mobile Flu Vaccine clinics
- Over The Counter Medicine Safety - Virtual Event

- The Retail Pharmacy Network Division continues to maintain and expand the Dispensary of Hope program
- Qualitas Pharmacy Services provided free medications to indigent patients for a total of \$246,109

Community

340B Drug Pricing Program

The RWJBarnabas Health Pharmacy Enterprise fully participates and remains in compliance with the 340B Drug Pricing Program as a means to help our surrounding communities. The 340B Drug Pricing Program is a U.S. federal government program created in 1992 that requires drug manufacturers to provide outpatient drugs to eligible health care organizations at significantly reduced prices. The intent of the program is to allow health care organizations to stretch scarce federal resources as far as possible, reaching more eligible patients and providing more comprehensive services. The 340B eligible hospitals within RWJBarnabas Health are: Clara Maass Medical Center, Jersey City Medical Center, Monmouth Medical Center, Monmouth Medical Center Southern Campus, Newark Beth Israel Medical Center, RWJ New Brunswick and the Hemophilia Treatment Center at Newark Beth Israel Medical Center.

The Retail Pharmacy Network Division dispensed 2,329 prescriptions under the charity program (Dispensary of Hope) that offers free medications to financially qualified patients.

The Retail Pharmacy Network in kind dollars, sponsored by the hospital, provides medications to patients in need. Clara Maass Medical Center \$10,297, Jersey City Medical Center \$64,688, Monmouth Medical Center \$49,696, Newark Beth Israel Medical Center \$107,268, Cooperman Barnabas Medical Center \$23,287, and Ambulatory Care Center \$1,650 for a total of \$256,886.

Qualitas Pharmacy Services Divisions provided \$411,942 in kind medications to our indigent patients.

Education

The Pharmacy Enterprise Team Members delivered **29 oral presentations** and **20 poster presentations** at the following International, National, Regional and Local conferences

- | | |
|--|--|
| <ul style="list-style-type: none"> • American Association of College of Pharmacy Annual Meeting • American College of Clinical Pharmacy • American College of Rheumatology Convergence • American Society of Consultant Pharmacists Annual Meeting • American Society of Health-System Pharmacists ASHP Midyear Clinical Meeting • Annual Lois Pollack Pediatric Nursing Conference • Care Coalition of New Jersey Annual Summit • College of Psychiatric and Neurologic Pharmacists' Communities Week • College of Psychiatric and Neurologic Pharmacists conference | <ul style="list-style-type: none"> • Department of Pediatrics Research Day RWJ New Brunswick • Eastern States Conference • Eastern States Residency Conference • Extension for Community Healthcare Outcomes • Grand Rounds • Infectious Disease Week • Neurocritical Care Society • New Jersey Pharmacists Association • New Jersey Society of Health System Pharmacists Annual Meeting • Pharmacist Continuing Education activity • Pharmacy Times • Research Society on Marijuana |
|--|--|

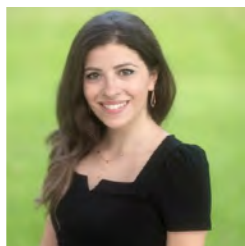
The Pharmacy Team completed **91 formal lectures** within the health system.

- | | |
|---|---|
| <ul style="list-style-type: none"> • Antiarrhythmic Lecture • APN Education • Critical Care Fellow Education • Critical Care Nursing Course • Critical Care Nursing Education • Critical Care Supports Course • Emergency Medicine Educational Conference • Emergency Medicine Interdisciplinary Education • Emergency Medicine Resident Education • Ernest Mario School of Pharmacy • Hematology/Oncology Interdisciplinary Education • Hematology/Oncology Physician Education • Infectious Disease Fellow/Resident Education • Intensive Care Medical Resident Education • Internal Medicine Resident Education | <ul style="list-style-type: none"> • JCMC Geriatric Grand Rounds • JCMC Noon conference • Medical Resident Education • Medical Writing lecture • Monmouth University • Nursing Education • Nursing onboarding education • Pediatric Interdisciplinary Education • Pediatric Medication Safety Workshop • Physician Assistant Education • Rutgers Physician Assistant Program • Rutgers School of Health Professions • RWJ-Somerset Falls Prevention Fair • Same Day Nursing Education |
|---|---|

The Pharmacy Enterprise provided advanced clinical clerkship rotations to over **651 PharmD students** training by staff members with adjunct faculty appointments at the following colleges of pharmacy:

- Ernest Mario School of Pharmacy
- Fairleigh Dickinson School of Pharmacy
- Philadelphia School of Pharmacy
- Shenandoah University

Education

**Emily Aboujaoude, PharmD**

Clinical Assistant Professor-
Rutgers University, Ernest
Mario School of Pharmacy
Drug Information Residency
Program Director- Robert
Wood Johnson University
Hospital

Drug Information Center

The Drug Information Center is currently staffed by one drug information specialist who is responsible for responding to drug information requests regarding appropriate therapy for a disease state, adverse drug reactions, medication efficacy, drug interactions, intravenous additive incompatibilities, pharmacokinetic drug parameters, and information on newly approved medications.

The drug information specialist also prepares drug monographs for Pharmacy and Therapeutics Committees, medication class reviews, medication use evaluations, develops/revises hospital policies, and assists residents and clinicians with the editing and publishing of research articles.

In 2021, the accomplishments of the Drug Information Center were:

- Drug Information Questions: 874
- Medication Use Evaluations: 1
- Drug Monographs: 45
- Precepting of Students, Fellows and Residents: 18—This includes 11 students, 6 PGY1 residents, 1 PGY2 resident and 1 fellow
- National Platform Presentations: 2
- National Poster Presentations: 2

Education

The American Society of Health-Systems Pharmacists (ASHP)

is a professional membership organization that has taken responsibility for accrediting pharmacy postgraduate year one (PGY1) and post graduate year two (PGY2) residency training programs for the pharmacy profession. A PGY1 pharmacy residency training is an organized, directed, accredited program that builds upon knowledge, skills and abilities gained from an accredited professional pharmacy degree program. The first-year residency enhances general competencies in managing medication-use systems and supports optimal medication therapy outcomes for patients with a broad range of disease states.

Residents in PGY1 residency programs are provided the opportunity to accelerate their growth beyond entry-level professional competence in patient-centered care and in pharmacy operational services, and to further the development of leadership skills that can be applied in any position and in any practice setting. PGY1 residents acquire substantial knowledge required for skillful problem solving, strengthen their professional values and attitudes, and advance the growth of their clinical judgment.

PGY2 pharmacy residency training is an organized, directed, accredited program that builds upon the competencies established in postgraduate year one of residency training. The program is focused in a specific area of practice. The PGY2 program increases the resident's depth of knowledge, skills, attitudes, and abilities to raise the resident's level of expertise in medication therapy management and clinical leadership in the area of focus. In those practice areas where board certification exists, graduates are prepared to pursue such certification.

Pharmacy Residency Program

RWJBarnabas Health offers an American Society of Health System Pharmacists (ASHP)-accredited PGY1 and PGY2 pharmacy practice residency programs. Residents are given the opportunity to work in interdisciplinary care teams to enhance their skills in evidence-based, patient-centered medication management, and to perform pharmacy practice research that is presented at ASHP's Midyear Meeting and at the Eastern States Residency Conference. Learning experiences are offered in the following areas:

- | | |
|----------------------|--------------------------------|
| • Administration | • General Hospital Pharmacy |
| • Ambulatory Care | • Hospital Dispensing/Staffing |
| • Cardiology | • Infectious Disease |
| • Community Outreach | • Internal Medicine |
| • Critical Care | • Oncology |
| • Drug Information | • Pediatrics |
| • Emergency Medicine | • Perioperative Services |
| • Research | • Transplant |
| • Medication Safety | |

As of 2021, each RWJBarnabas Health Facility offers the following number of PGY1 pharmacy residency positions per year:

- Clara Maass Medical Center: Two
- Community Medical Center: Two
- Jersey City Medical Center: Two
- Monmouth Medical Center: Two
- Newark Beth Israel Medical Center: Two
- RWJ New Brunswick: Two
- RWJ Somerset: Two
- Cooperman Barnabas Medical Center: Four
- Qualitas Pharmacy Services: One

As of 2021, each RWJBarnabas Health Facility offers the following number of PGY2 pharmacy residency positions per year:

- Behavioral Health Center: One—Psychiatry
- Community Medical Center: One—Critical Care
- Corporate Pharmacy: One - Ambulatory Care
- Cooperman Barnabas Medical Center: One—Geriatrics

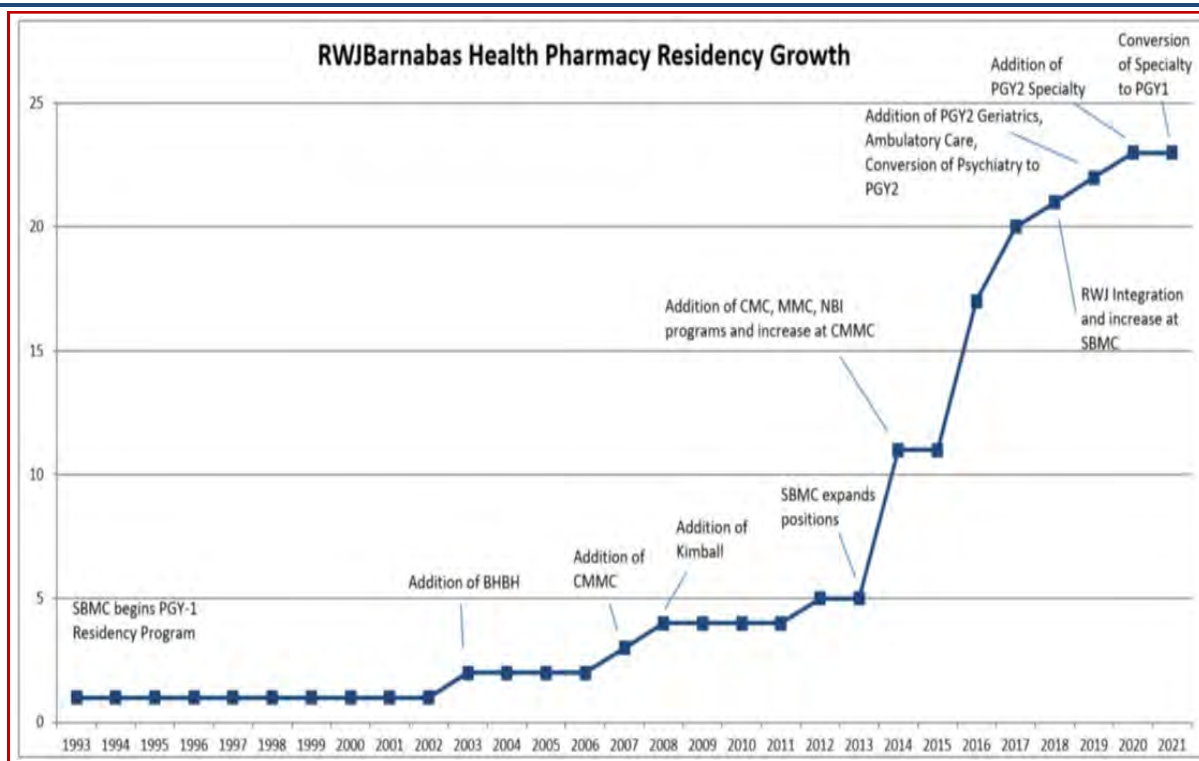
Additionally, the following sites serve as primary training locations for the listed Rutgers University PGY2 Programs:

- Monmouth Medical Center: One—Neuropsychiatry
- RWJ New Brunswick: Two—Emergency Medicine
- RWJ New Brunswick: Two—Drug Information
- Cooperman Barnabas Medical Center: One—Pediatrics

The Pharmacy Enterprise in the past 9 years has retained more than 63 residents, representing a 29% retention rate

Education

RWJBarnabas Health has made a substantial investment to the education of future pharmacy practitioners by expanding the residency programs throughout the health system. The graph below highlights the historical milestones of our program



Residency Changes in 2021

- The PGY2 Geriatrics and PGY1 at Cooperman Barnabas Medical Center received their Accreditation from ASHP
- The PGY2 residency program for Ambulatory Care received a full eight year accreditation from ASHP
- The PGY2 residency program for Psychiatry will be undergoing its accreditation visit in 2022. This was delayed from the originally planned visit.
- The PGY2 residency program for Specialty Pharmacy and Administration was converted to a PGY1 residency program and will undergo its accreditation visit in 2022.

Residency Advocacy for 2021

- Continuation of an ASHP Midyear Newsletter
- Continuation of the Residency Annual Report
- Continuation of Leadership Forum
 - System PGY2 continue to serve as instructors
 - Big/Little Mentorship Program was continued
- 1 informational webinar hosted for students
 - Managing a Virtual Midyear - November 16, 2021 – a panel of three Residency Ambassadors and 1 PGY2 resident
- Addition of 3 new Residency Ambassadors
- Social Media - rwjbhpharmacy: Instagram, Twitter, Facebook
- Impact - 4.6K Instagram engagements (922 followers), 2.2K Facebook engagements

Residency Marketing Changes in 2021

- RWJBarnabas Health Website updated
- ASHP Directory updated
- Showcases Covered
 - St Johns, Rutgers, FDU, ASHP
- Resident Instagram Takeover by each facility
- Addition of a Linked-in Page and Alumni group

Quality and Safety

Providing high-quality, safe medical care is a primary goal at RWJBarnabas Health

As experts in medication delivery, pharmacists play an integral role in preventing and managing medication errors; however, ensuring safety in the health system is a team effort. Pharmacists need to broaden their responsibilities by taking on roles in quality and performance improvement projects. Pharmacists are well positioned to assist the healthcare system in improving quality of care as they are already established as experts in medication management processes. The RWJBarnabas Health Pharmacy Enterprise has a strong focus on Quality Improvement including initiatives such as the Medication Use Evaluation Program.

In 2021, the Pharmacy Enterprise continued to make progress on the following MUEs:

- Decrease Antimicrobial Days of Therapy
- Decrease Wholesale Acquisition Cost within 340B Program
- Decrease the Number of Opioid Prescriptions from Emergency Departments
- Obtain Top Three Status in Net Promoter Score for Qualitas Specialty Pharmacy
- Maintain Infection Rate Below National Benchmark in Home Infusion

Additionally, the following MUE was added:

- Maintain Library Pump Compliance System-wide of 95%

RWJBarnabas Health pharmacists continuously utilize quality improvement tools to promote appropriate medication use. A medication use evaluation (MUE) is a performance improvement method that focuses on evaluating and improving medication use processes with the goal of optimal patient outcomes. The MUE process helps to identify actual and potential medication-related problems, resolve actual medication-related problems, and prevent potential medication-related problems that could interfere with achieving optimum outcomes from medication therapy.

Specific MUE objectives include:

- Promoting optimal medication therapy
- Preventing medication-related problems
- Evaluating effectiveness of medication therapy
- Improving patient safety
- Standardizing medication use practices
- Promoting cost-effective therapy
- Meeting or exceeding internal and external quality standards

Medications may be selected for MUEs for any or all of the following reasons:

- Medication is known or suspected to cause adverse reactions
- Medication is known to interact with other medications
- Medication is used in the treatment of high-risk patients
- Medication is frequently prescribed
- Medication has a narrow therapeutic index
- Medication is under consideration for formulary retention, addition or deletion
- Medication is expensive

RWJBarnabas Health pharmacists play a large role in the MUE process. Specifically, they:

- Develop the operational plan
- Work collaboratively with prescribers and other health care professionals to develop criteria for specific medications and to design effective medication use processes
- Collect, analyze, and evaluate patient-specific data to identify, resolve, and prevent medication-related problems
- Interpret and report MUE findings and recommend changes in the medication use process
- Provide education based on MUE findings

Quality and Safety

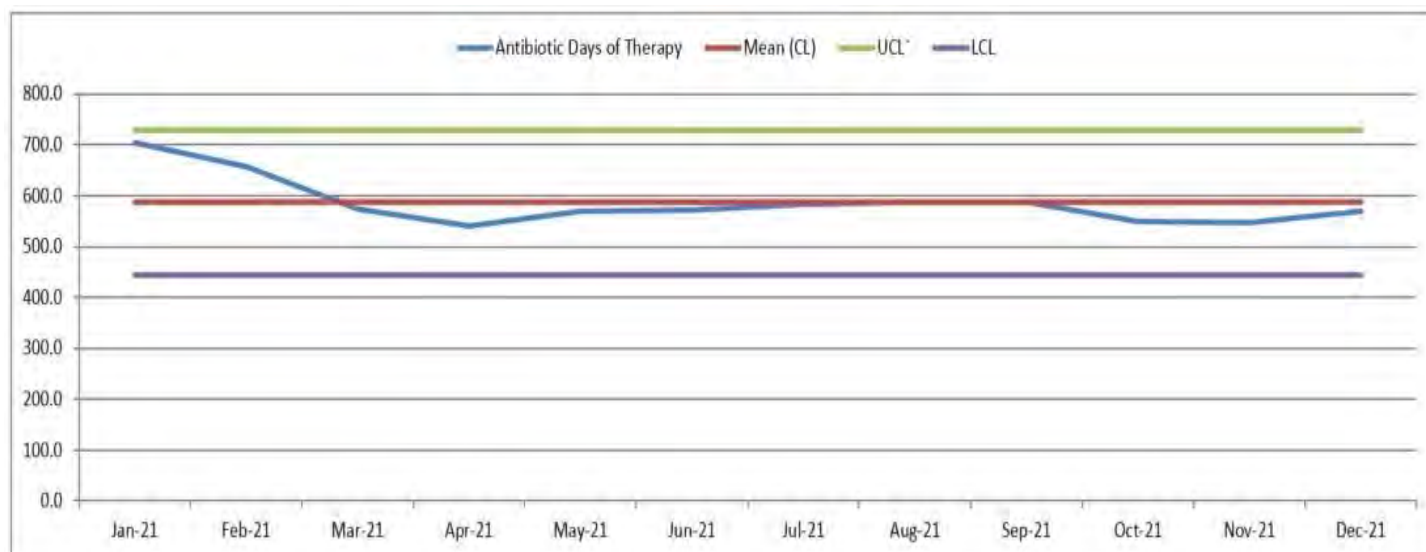
Antimicrobial Stewardship Program (ASP) is a coordinated program that promotes the appropriate use of antimicrobials (including antibiotics), improves patient outcomes, reduces microbial resistance, and decreases the spread of infections caused by multidrug-resistant organisms. Implementation of an ASP is vital due to estimates that up to 50% of all antibiotics prescribed in hospitals are unnecessary or inappropriate. The historical RWJBarnabas Health ASP had foundational program elements of: surveillance of culture and sensitivity, de-escalation and escalation, IV to oral transitioning and renal adjustment of antimicrobial therapy. The Pharmacy Infectious Diseases Collaborative worked with several disciplines to implement the following initiatives to strengthen the program

Antimicrobial Stewardship Report Compliance with CMS

To guide clinicians to the most cost effective therapy, filters that have been included in the lab system—suppress susceptibility panel to only include those agents that are most cost effective

The documentation of indication for antimicrobial use is live in all facilities

The metrics for success are the delays of antibiotic therapy and cost per day of antibiotic therapy



The Pharmacy Enterprise migrated to measuring quality initiatives in a control chart methodology. The graphs displayed above are control chart, used to study how a process changes over time. Data are plotted chronologically. A control chart always has a central line for the average (highlighted in red), and upper line for the upper control limit (highlighted in green) and a lower line for the lower control limit (highlighted in purples). These lines are determined from historical data.

Quality and Safety

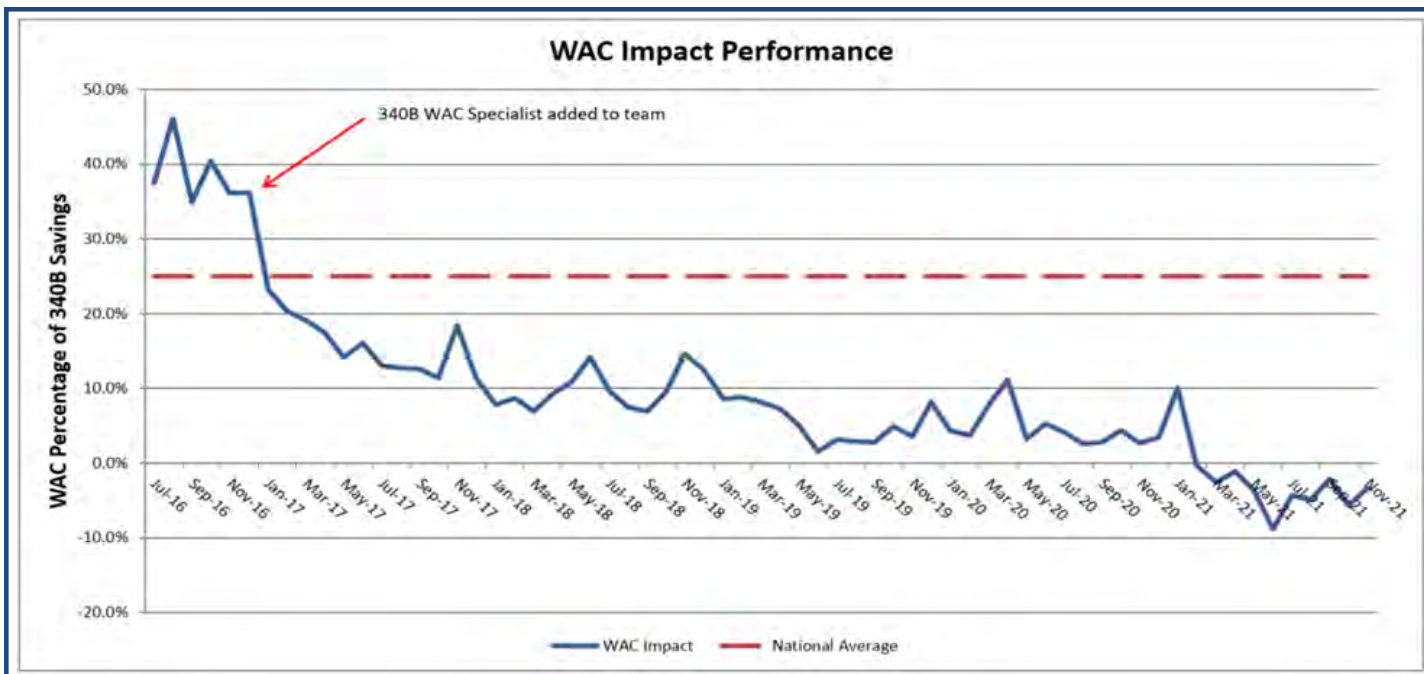
The **RWJBarnabas Health** Pharmacy Enterprise fully participates and remains in compliance with the 340B Drug Pricing Program as a means to help our surrounding communities. To maintain the balance of cost savings with compliance requirements we utilize a software program to track our purchases and determine eligibility of any one prescription or physician order.

In the hospital pharmacy, medications are purchased and dispensed by their 11-digit National Drug Code (NDC), which denotes a specific manufacturer, medication and package size and they are billed by the charge description master (CDM), stored in the hospital information system (HIS).

The 340B Program requires hospitals to perform two tasks central to 340B compliance: correlate each patient utilization event to a specific 11-digit NDC and tie each NDC to the specific purchase order and account at which it was purchased: wholesale acquisition cost (WAC), group purchasing organization (GPO), or 340B/PHS (340B) discounted pricing. The WAC price is the most expensive account on which to purchase medications and nationally 340B hospitals purchase an estimated 25% of their purchases in this manner. The majority of the reasons for these purchases are due to:

- Eligibility must be a full unit of issuance (UOI)
- CDM/NDC Mapping
- Location within the hospital mapping
- Billing discrepancies
- No 340B price found in commercial databases
- Manufacturer does not offer 340B pricing
- NDC virtual inventory management

In 2021, RWJBH transitioned to a new 340B third party application (TPA) which offered enhanced mechanisms for mitigating exposure to higher dollar WAC purchases while maintaining compliance with 340B Program guidelines. The conversion helped produce a negative WAC impact for 2021.



Quality and Safety

The Opioid Use Reduction Initiative

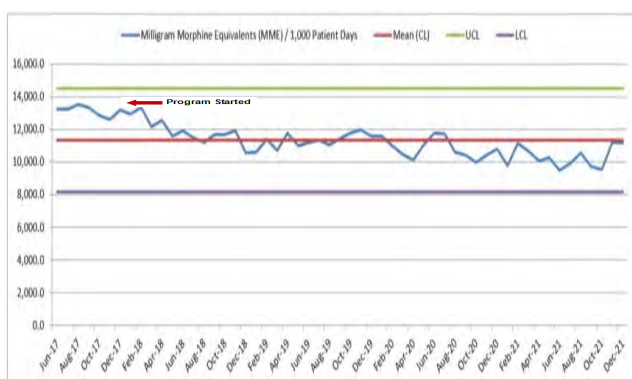
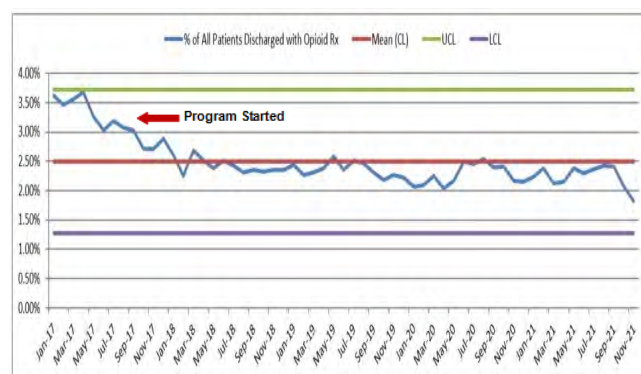
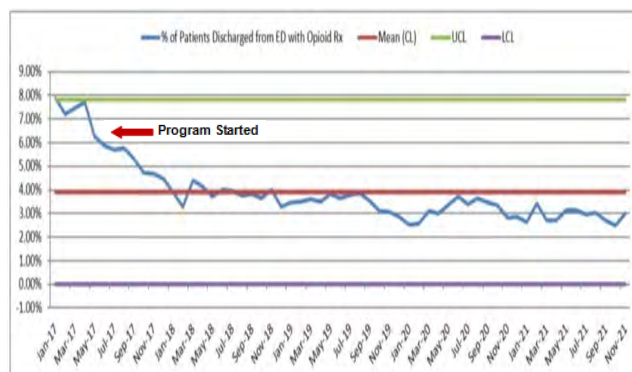
According to the Centers for Disease Control and Prevention, more than 750,000 people have died since 1999 from a drug overdose. Two out of three drug overdose deaths in 2018 involved an opioid. Every day, hospitals and health systems see the effects of the nation's opioid epidemic.

RWJBarnabas Health has been working to address this public health issue for many years. The system began its work with the formation of the Tackling Addiction Task Force. This Taskforce is a multi-disciplinary group of practitioners focused on: education, prevention, recovery, intervention and treatment. The taskforce empowered the RWJBarnabas Health Emergency Room Collaborative and the Pharmacy Enterprise to create an Opioid Stewardship Program. An Opioid Stewardship program is coordination of interventions designed to improve, monitor and evaluate the use of opioids in order to support and protect human health.

This collaboration led to the development of the system DROP (Deliberate Reduction of Opioids) program led by the RWJBarnabas Health Institute for Prevention and Recovery

This group has completed a number of steps to reduce opioid prescribing and increase access to treatment for opioid addiction:

- Clinician education on prescribing practices
- Creation of evidence-based order sets for pain management across entire system that focus on multimodal pain management to minimize opioid use
- Creation of opioid withdrawal prevention and treatment policy and order set/protocol for all sites
- Continual monitoring of opioid and alternative agent use at all sites through data analytics report converting all opioid prescriptions to morphine equivalents.
- ED and Inpatient review of disease states with highest levels of opioid use
 - Targeted education and order set review for these disease states
 - Created protocols for use of alternate agents to decrease opioids and provide pain management
- Multi-site research on opioid alternatives such as lidocaine and ketamine
 - Developed guidance (policy/education/order set) for providers on how to incorporate into Lidocaine or Ketamine into clinical practice



The number of ED patients discharged with an opioid prescription increased from **10,986** in 2020 to **11,832** in 2021 (**846** more patients or a **7.7%** increase). Given the **20.3%** increase in ED discharges from 2020 to 2021, we would have expected to see **2,226** more ED patients discharged with an opioid prescription.

Quality and Safety

The **RWJBarnabas Health**-owned Qualitas Specialty Pharmacy Division partnered with Zitter Health Insights, a national health care consulting firm, to produce a Patient Survey Program to measure key performance areas affecting patient engagement. By standardizing a performance measurement tool, the intent was to make it easier for payors, manufacturers, patients and pharmacies to adequately understand and benchmark their performance against other organizations. The survey evaluated issues such as:

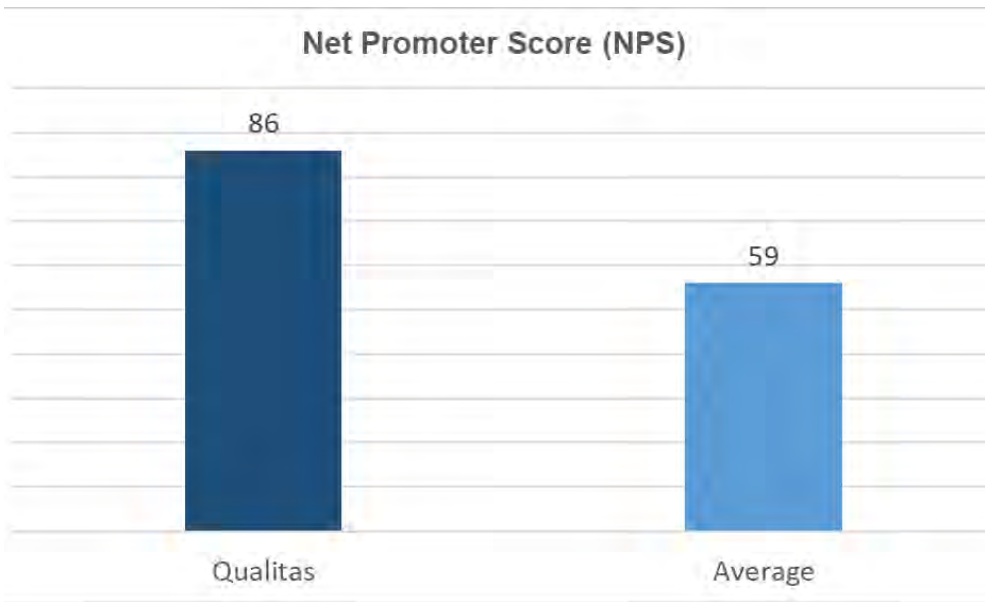
- Access
- Billing
- Overall Satisfaction
- Pharmacy / Staff Performance
- Prescription Fulfillment
- Willingness to Refer Friends or Family Members

Key performance metrics around patient satisfaction were:

- Prompt Call Center Interactions
- Prescription Fulfillment
- Staff Listening Skills and Empathy
- Staff Knowledge of Disease and Medication

The analysis compared other large Specialty Pharmacy Providers Net Promoter scores to the Qualitas Specialty Pharmacy Division. A Net Promoter Score (NPS) is a cross-industry standardized index ranging from -100 to 100 that measures a customer's overall satisfaction with a company's product or service, as well as a customer's loyalty to the brand. Determining an NPS allows for a comparison between specialty pharmacy and other service-oriented organizations in a variety of sectors.

In 2021 RWJBarnabas Health's Qualitas Specialty Pharmacy Division achieved one of the highest Net Promoter scores among Hospital and Health system-based specialty pharmacies in the United States according to Zitter Health Insights.

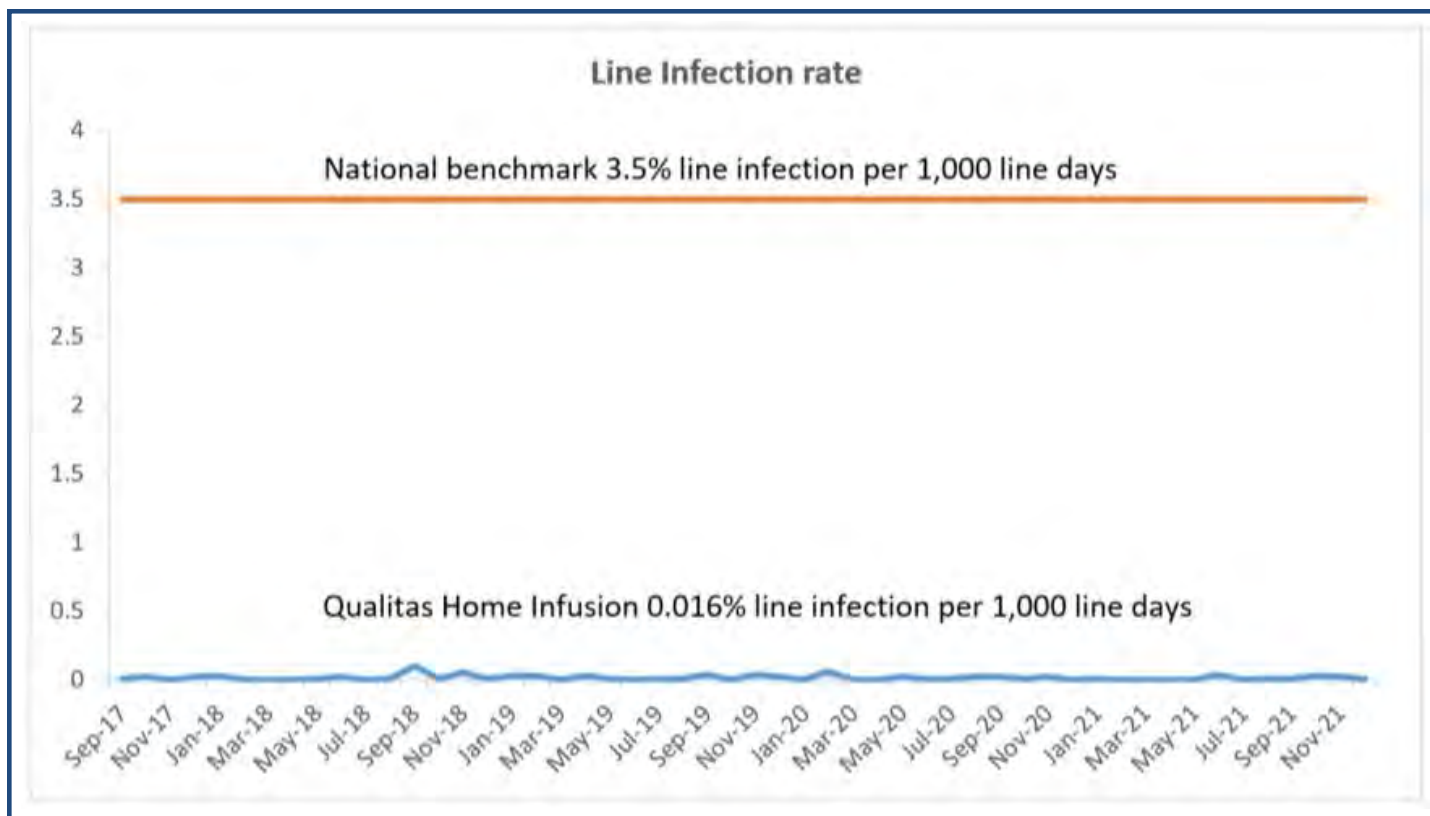


Quality and Safety

Home infusion therapy is a treatment option for patients with a wide range of acute and chronic conditions, ranging from bacterial infections to more complex conditions such as late-stage heart failure and immune deficiencies. Home infusion therapy affords a patient independence and better quality of life, because it is provided in the comfort of the patient's home at a time that best fits his or her needs. It may also reduce the risk of hospital-acquired infections and provide improved safety and better outcomes for patients.

Diseases that may require infusion therapy include infections that are unresponsive to oral antibiotics, cancer and cancer-related pain, dehydration, congestive heart failure, Crohn's Disease, hemophilia, hepatitis, immune deficiencies, multiple sclerosis and rheumatoid arthritis.

The **RWJBarnabas Health** Home Infusion Division through the dedication of its Home Infusion Nurses has maintained strict adherence to the Centers of Disease Control criteria for preventing intravenous line infections. Our nurses have consistently maintained an infection rate that is 18 times below the national benchmark.



Quality and Safety

Maintain Compliance with Intravenous Drug Library at 95%

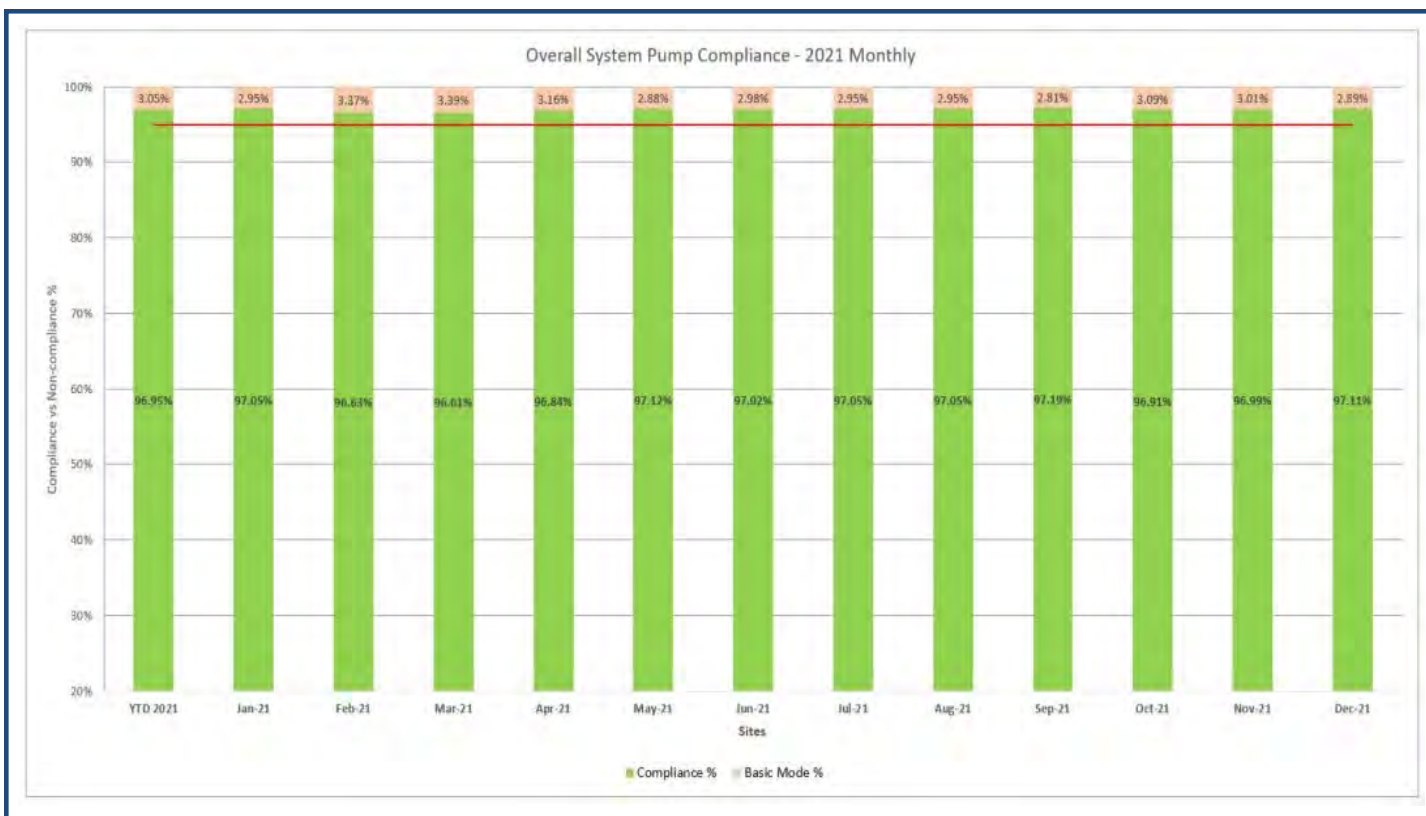
Smart infusion pumps combine computer technology and drug libraries to limit the potential for dosing errors. An infusion pump drug library allows medications to be built within care areas and with minimum and maximum limits to facilitate safe infusion medication administration. A study published in 2016 found that bypassing the smart infusion pump or the drug library accounted for about 10% of the total number of errors or policy violations relating to infusion administration¹. The Joint Commission realized the importance of optimizing utilization of smart infusion pumps and built-in dose error reduction software (DERS) and issued a Sentinel Event Alert in April of 2021.²

RWJBarnabas Health had set a goal to monitor pump compliance beginning in January of 2021 and look for opportunities to optimize the DERS technology. The goal was to ensure compliance with the pump library for 95% of infusions.

RWJBarnabas Health successfully meet the compliance goal in 2021. This outcome will continue to be monitored for 2022 along with the incorporation of additional recommendations provided by The Joint Commission.

¹Schnock KO, et al. The frequency of intravenous medication administration errors related to smart infusion pumps: A multihospital observational study. *BMJ Quality and Safety*, 2016;26(2):93-94.

² Optimizing smart infusion pump safety with DERS. Sentinel Event Alert. Issue 63, April 14 2021.



Quality and Safety

Regulatory

The RWJBarnabas Health Pharmacy Enterprise must comply with the regulations of the FDA, CDC, CMS, The Joint Commission (TJC), DNV Health Care, the New Jersey Board of Pharmacy, the EPA, ASHP and the Department of Health

This past year, our Pharmacy Enterprise successfully completed the following internal and external regulatory audits:

340B Internal Review
American Council for Graduate Medical Education
Centers for Disease Control and Prevention
Controlled Substance Internal Compliance Reviews
Dialysis Audit Program
Environmental Protection Agency
Leap Frog Medication Reconciliation
New Jersey Department of Environmental Protection
Occupational Safety and Health Administration
CMS
Multiple TJC Accreditation Visits
New Jersey Department of Health
New Jersey Board of Pharmacy
Middlesex County Fire Marshall
DNV Healthcare
American Society of Health System Pharmacists PGY1 and PGY2 Accreditation
Health Resources & Services Administration 340B
URAC Measure Data Validation
National Cancer Institute Cancer Therapy Evaluation Program

Quality and Safety

Technology

Pyxis ES 1.6 Upgrade

In 2021, nine Acute Care Service Line Facilities upgraded Pyxis ES from 1.4.4.1 to 1.6 including Med and Anesthesia stations. The 1.6 upgrade included each facility validating over 150 scenarios to ensure medication orders are accurate on the stations and functioning as expected. In addition, we migrated the facilities to new servers which involved interdisciplinary collaboration with Corporate IT Security, Corporate IT Server/Network and the PMO teams.

Resource Global Health Rebate Program

In early 2021, RWJBarnabas Health engaged Resource Global Health (RGHRx) to provide rebate claims submission and collection services on eligible drugs as determined by the program's formulary. Non-PBM adjudicated claims data were generated from our Acute Care Service Line facilities and Qualitas Specialty Pharmacy.

EMS Sapphire IV Pump Implementation

In 2021, nine Acute Care Service Line Facilities implemented 125 new Sapphire continuous infusion smart pumps for Mobile Health Services. A comprehensive system-wide drug library of almost 950 entries was built leveraging our existing EMS and Critical Care area libraries from our large infusion smart pumps. The smart infusion pump library alerts clinicians when a medication infusion limit is exceeded and detects programming errors before an infusion is delivered to a patient.

Epic Willow Go-Live

In October 2021, Acute Care Service Line facility RWJ University Hospital at Somerset transitioned from their heritage EHR system AllScripts/Sunrise Clinical Manager to Epic Willow. The new clinical information system was implemented to existing departments already on Allscripts along with areas previously documenting on paper or a standalone EHR. A multidisciplinary team assisted with the build and validation efforts leading to a successful go-live for Somerset.

CDM Pharmacy Pricing Update

The PRD team reviewed the entire pharmacy CDM of over 54,000 charge items to reflect current pricing and system pharmacy pricing strategies. PRD worked with Revenue Integrity to update any pharmacy CDMs across our Acute Care Service Line facilities.

Research and Publications

Research and publication is strongly encouraged at RWJBarnabas Health. Our pharmacists have been doing an increasing amount of research for more than a decade. Pharmacists contribute a unique expertise to the medication-related aspects of patient care, taking personal and professional responsibility for the outcomes from the pharmaceutical care they provide to patients. Improvements in medication therapy (from safety, efficacy, and cost perspective) depend on new knowledge generated by scientific research. Health-system pharmacists have a professional obligation to participate actively in and increase pharmacy related and drug-related research efforts.

In 2021, **The Pharmacy Enterprise** completed **42** peer reviewed manuscripts, book chapters, guidelines and articles.

In 2021, **The Pharmacy Enterprise** completed **3** non-peer reviewed manuscripts, book chapters, guidelines and articles.

A total of **20** abstracts were created and presented at local, national and international meetings

Manuscripts, book chapters and articles were published in the following periodicals

- Academic Emergency Medicine
- American College of Clinical Pharmacy
- American Pharmacists Association
- Annals of Pharmacotherapy
- Antimicrobial Agents and Chemotherapy
- BMSCH Safety and Quality newsletter
- Clinical and Experimental Rheumatology
- Critical Care Explorations
- Critical Care Medicine
- Current Medical Research and Opinion
- Currents in Pharmacy Teaching and Learning
- DiaTribe
- Hematology Oncology Pharmacy Association News
- Journal of Clinical Medicine
- Journal of Clinical Pharmacy and Therapeutics
- Journal of Hematology Oncology Pharmacy
- Journal of Oncology Pharmacy Practice
- Journal of Pediatric Pharmacology and Therapeutics
- Journal of Pharmacy Practice
- Journal of the American Academy of PAs
- Lung, Pulmonary & Respiratory Research Journal
- National Library of Medicine
- NJ Journal of Pharmacy
- Pediatrics
- Pharmacotherapy
- Pharmacy
- Pharmacy Times
- SAGE Open Medicine
- The Cureus Journal of Medical Science

In Memory



Fermin B. Tuvera, Jr.

Qualitas

Fermin B. Tuvera, Jr. entered eternal life on February 7, 2022

Fermin B. Tuvera, Jr., 57, passed away on Monday, February 7, 2022 at Robert Wood Johnson University Hospital in New Brunswick. Born in Villasis, Philippines to Fermin Sr. and Romualda Buenaflor, Fermin immigrated to the United States in 1984. He lived in Jersey City and Belleville prior to marrying his best friend Cynthia in 1990, where they then settled to Union and Hillside before becoming a resident of Piscataway in 1993.

He was proud to be a DJ and loved entertaining people as the owner of JC2 VRA Productions and was a warehouse associate for Qualitas Pharmacy Services in South Plainfield. Fermin enjoyed following his wife's Zumba classes and loved hiking and bowling.

Fermin leaves behind his wife Cynthia Tuvera, daughter Nikki Tuvera and son Noel Tuvera.

Fermin was a remarkable man we were humbled by his kindness and compassion to everyone around him. His outgoing personality & sense of humor will be greatly missed as a Colleague and a True Friend.

In Memory



Hoytin Lee Ghin, PharmD, BCPS
Monmouth Medical Center

(1978 - 2022)

Dr. Hoytin Lee Ghin, PharmD, BCPS has been a member of the RWJBarnabas Health Pharmacy Enterprise from 2002 until his passing in 2022. Hoytin had a distinguished career that was unfortunately far too short. He joined Monmouth Medical Center (MMC) and the Ernest Mario School of Pharmacy at Rutgers University in 2002 as a clinical pharmacist and Clinical Assistant Professor. He was promoted to Clinical Coordinator for the Pharmacy in 2009, providing clinical pharmacy services support on the Cardio-Pulmonary, Telemetry and Stroke Units and to the Medical Staff. He was promoted to assistant director in 2010. During his hospital tenure, Hoytin also served as program director of the PGY1 Pharmacy Residency Program, and was devoted to his role as an educator. Dr Lee-Ghin was a strong advocate for the pharmacy profession, as well as his commitment to ongoing pharmacy education through leading the post-doctoral residency program at MMC. Under Hoytin's direction, the MMC pharmacy residency program maintained an impressive 100 percent job placement and a 50 percent retention rate in the RWJBarnabas Health System. He also contributed greatly to the clinical programs of both the hospital and the healthcare system. He will be remembered for his warm, endearing smile and his outgoing, friendly nature. His legacy will live on forever through the countless students, residents, pharmacist and technicians who had the honor to work with him.

"Hoytin was a part of my entire journey as a pharmacist – from my professor, to my colleague, then my clinical mentor. RWJBH Pharmacy will never be the same without him, and he will be missed by innumerable friends and family whose lives were touched by him in a myriad of ways." Michelle Gardiner, PharmD, BCGP

"Hoytin was a very talented clinical pharmacist. He had an amazing sense of humor and we laughed a lot as we worked through our days. He, and his contributions to the MMC Pharmacy Residency Program will not be forgotten. I will miss him every day." Scott Mathis, PharmD

"Hoytin always made time for you if you needed it, work related or not. He was dedicated to his work family, especially to the Pharmacy Residency Program which he implemented and successfully managed from the very beginning at MMC. He will be missed!" Germin Fahim, PharmD, BCPS

"Hoytin was the type of person who never settled for anything less than what was right. He generously gave us his knowledge, his expertise and his skills. He was a champion for his patients, was always collaborative and helped everyone become better." Indu Lew, PharmD

"Hoytin played a large role in helping me become the pharmacist I am today. As one of his previous PGY-1 residents, he wasn't just a residency program director. He truly cared about me and my co-resident and helped us to laugh and enjoy life during that challenging time. Hoytin encouraged me to step out of my comfort zone, challenge myself, and learn new things which helped me to grow. Hoytin will be missed by many of those he's impacted." Alyssa Gallipani, PharmD, BCACP

"I was able to learn so much from Hoytin over the years, from his teaching days at Rutgers to our days as colleagues at RWJBarnabas Health. He was so dedicated to the profession, patient care and his colleagues. He always took the time to connect on a personal level and find something in common with whomever he met. Hoytin is truly missed." Jessica Hill-Koerner PharmD, BCPS, BCACP, FASHP

"Hoytin always had an open-door policy for his residents and coworkers. He was a wealth of knowledge and loved chatting over a bite to eat. I am so grateful to him for his guidance in my career. He will be sincerely missed." Marija Markovic, PharmD, BCPP

In Memory



Patricia (Trish) Tucker

Community Medical Center

Patricia "Trish" Tucker of Bayville, New Jersey passed away on Friday, October 1st, 2021

Trish was born in Yonkers, NY. She moved to Toms River, NJ in 1963 before settling in Bayville in 1976 where she raised her family. Trish joined the Pharmacy Team at Community Medical Center and was a valuable member of the team for 32 years. She loved helping people. The entire hospital nightshift team knew Trish and appreciated her strong, caring, and fun personality. They respected Trish and asked for her when she wasn't here. She was a vital member of the pharmacy technician team and often took on the responsibility of welcoming and training new team members.

Trish loved her Saint Bernards and was a champion for animals, especially dogs. She valued time she spent with her family, and close friends, and especially cherished her moments with her granddaughter.

Trish is survived by her beloved husband Robert of 53 years; her son Christopher and his wife Jacki; her daughter Jennifer and her husband Ronney; her son Brian and her granddaughter Brooke; as well as nieces and nephews.

Trish will be remembered for her smile and caring, witty personality. She will be greatly missed.

In Memory



Santina Mary Staveris,
RPh

Cooperman Barnabas Medical
Center

Santina Staveris (née Marotta) entered eternal life on September 9, 2021 after a long illness

Tina grew up in West Orange, and was a graduate of Rutgers College of Pharmacy, Class of 1985. Tina began her pharmacy career at Saint Mary's and joined the Pharmacy Team at SBMC in 1987 when Saint Mary's closed. Tina specialized in TPN (Total Parenteral Nutrition) and helped many patients throughout her career with her attention to detail and communication with the physicians who order TPN.

Tina loved animals, and was a great supporter of zoos. She attempted to visit a zoo in each state. During her illness, her colleagues in the pharmacy department thoughtfully organized a petting zoo to travel to Tina's home. Tina loved visits from the therapy dogs here at SBMC who would visit her when she was working as well as when she was a patient. This inspired Tina and her husband Tony to adopt a dog of their own, Tiara, who brought them great joy over the last several months.

Tina is survived by her devoted and dedicated husband, Anthony Staveris, sister Ann Marotta, and brother Albert Marotta and his wife Michele, as well as many family, friends, and colleagues here at SBMC. She will be greatly missed.

Tina will be remembered for her quiet, gentle manner, conscientiousness in her work, creativity, and as an important thread that held her family together.

