



## PURPOSE

Our PGY2 pharmacy residency program builds on PGY1 education to develop clinical pharmacists specialized in ambulatory care and provides opportunities to function independently as a practitioner. Graduates of our program will be prepared for advanced patient care, academic positions and board certification.

Mission: Provide integrated health services while developing sustained partnerships with patients and providers.

## CONTACT US

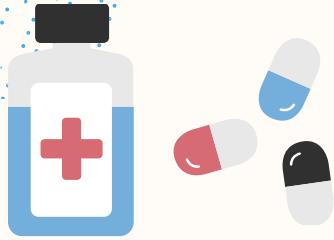
Alyssa Gallipani, PharmD, BCACP  
Residency Program Director  
95 Old Short Hills Road  
West Orange, NJ 07052  
(862) 212-2486  
[alyssa.gallipani@rwjbh.org](mailto:alyssa.gallipani@rwjbh.org)



## PGY-2 AMBULATORY CARE RESIDENCY

**RWJBarnabas  
HEALTH**





## APPLICATION PROCESS

Please provide the following on the PHORCAS website no later than **January 1st**.

- Curriculum vitae
- Letter of intent
- Copy of academic transcripts
- Three letters of recommendation

Other requirements:

- Onsite interview required
- Must have a valid NJ Pharmacy License by **October 1st**
- Completion of PGY1 Residency

### STIPEND AND BENEFITS

- Competitive salary
- Two weeks paid vacation and holidays
- Health and dental insurance
- Travel support to a conference

## ABOUT OUR PROGRAM

### LEARNING EXPERIENCES

#### Core Learning Experiences:

- Orientation
- Diabetes Medication Management
- Asian Health/Viral Hepatitis
- Infectious Disease
- Specialty Pharmacy
- Geriatrics
- Corporate Pharmacy

#### Longitudinal Learning Experiences:

- Population Health
- Research
- Teaching and Education
- Management and Leadership

#### Elective Learning Experiences:

- Any above rotation with added focus on specific disease/practice area

### OPPORTUNITIES

#### TEACHING

- This PGY-2 program has a strong academic focus and affiliation with two local schools of pharmacy. Residents will work with Fairleigh Dickinson and Rutgers School of Pharmacy professors and participate in a teaching certificate program offered by Ernest Mario School of Pharmacy.

#### LEADERSHIP FORUM

- Designed for residents to gain experience and expertise in Leadership and Management. Interactive sessions allow formation of a deeper connection and relationship with residents throughout the enterprise.

### PRACTICE SETTING

RWJBH Primary Care is a multi-specialty group practice that provides care across NJ's largest integrated health system. We are composed of highly experienced primary and specialty care providers, including Doctor of Medicine, Advanced Practicing Nurses and Physician Assistants.

Residents will rotate between various practice locations throughout the RWJBH enterprise, including Florham Park, Livingston, Shrewsbury, Eatontown, Jersey City, Bridgewater, East Brunswick, and Warren. Travel is expected between sites.

### PROGRAM OUTCOMES

One PGY-2 position available

The PGY-2 Ambulatory Care program conducted by RWJBarnabas Health has an accredited status with ASHP.

#### Graduates of the program will develop and strengthen the following:

- Ability to establish a collaborative practice
- Utilization of evidence-based patient centered treatment for chronic disease state management
- Promote population health and wellness
- Demonstrate excellence in teaching pharmacists, providers and patients
- Leadership and practice management
- Complete research project and present results as a platform presentation at a conference