

Welcome Back.

Emergency Department: Ready for you.

It's safe to come in for an emergency — don't delay care.

We recognize that patients and their families may be anxious to seek medical care at this time. However, it is vitally important to understand that care should not be delayed for patients experiencing signs and symptoms of a **heart attack** or **stroke** or other emergencies. Jersey City Medical Center (JCMC) remains ready to safely provide care in our Emergency Departments, in our main campus in Jersey City and at the Satellite Emergency Department in Bayonne.

Safety is first.

At JCMC, as a high reliability organization, safety comes first and is embedded in everything we do. With the safety of our patients and team members at the forefront, we are taking the heightened precautions and using best practices to continue to ensure the highest quality care, protection, support and comfort for all of our patients. Some of these measures include:

- Adherence to the guidance and established criteria of the Centers for Disease Control and Prevention, the American Hospital Association, leading national associations of nurses, surgeons and anesthesiologists, and the New Jersey Department of Health.
- Staff vigilance regarding the appropriate use of Personal Protective Equipment (PPE) with all patients, including COVID-19 positive and non-COVID patients.
- Stringent cleaning and disinfection throughout our facilities and in all rooms, including equipment and surfaces, frequently and between patients.
- Active screening for symptoms of team members, patients and visitors (when permitted) upon entering our facility.
- Requiring everyone who enters a facility to wear a mask or face covering, per CDC universal masking guidelines and our RWJBarnabas Health mask policy.



N95 Masks



For more information visit
rwjbh.org/WelcomeBack

**Jersey City
Medical Center**

**RWJBarnabas
HEALTH**

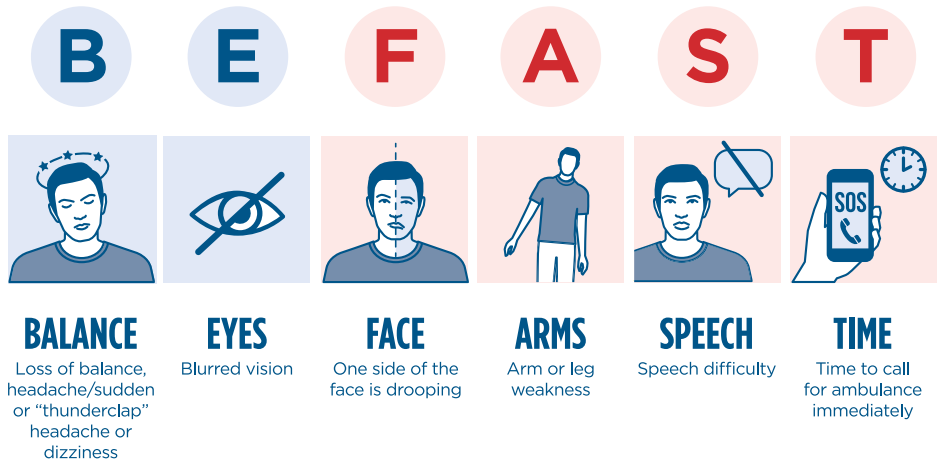
Welcome Back.

Emergency Department: Ready for you.

- **Continued restriction of visitors.**
- Social and physical distancing measures for all people in our facilities – in all employee and patient areas – such as minimizing time in waiting areas and spacing chairs at least 6 feet apart to avoid crowding.
- Strict hand hygiene and availability of hand sanitizer in all employee and patient areas.
- COVID-19 testing for all Emergency Department patients who meet the criteria.
- Continued preparation and readiness for potential future surges.

Stroke awareness.

While each individual may experience different stroke symptoms, these are the most common. Time is crucial when treating and recovering from a stroke. Act quickly. Don't wait. Stroke is a medical emergency and every second counts.



Jersey City Medical Center
355 Grand Street, Jersey City, NJ 07302
Phone: 201-915-2000

JCMC Satellite Emergency Department
RWJBarnabas Health at Bayonne
519 Broadway (at 24th Street), Bayonne, NJ 07002
Phone: 201-716-5700

rwjbh.org/jerseycity