

Jacqueline M. Wilentz Comprehensive Breast Center at Monmouth Medical Center
300 Second Avenue (Entrance on Third Avenue), Long Branch, NJ 07740
732.923.7700

**Monmouth Medical Center
Satellite Breast Center Locations**

Colts Neck

Jacqueline M. Wilentz Breast Center at Colts Neck
Screening Mammography and Bone Density Testing
310 Route 34 South, Second Floor
Colts Neck, NJ 07722
732.923.7700

Howell

Jacqueline M. Wilentz Breast Center at Howell
Screening Mammography, Bone Density, X-ray and Genetic Counseling Services
4013 Route 9 North, Suite 2S
Aldrich Plaza Shopping Center
Howell, NJ 07731
732.923.7700

Lakewood

Monmouth Medical Center, Southern Campus
Screening and Diagnostic Mammography and Ultrasound
600 River Avenue
Lakewood, NJ 08701
732.923.7700

**Appointments are not required for our services at the Colts Neck and Howell locations, and are not required for screening mammography at our main location at Monmouth Medical Center or at Monmouth Medical Center, Southern Campus*

**Monmouth Medical Center
Outpatient Lab and Imaging Locations**

Long Branch

Monmouth Medical Center Outpatient Laboratory Services
300 Second Avenue (inside the hospital)
Long Branch, NJ 07740
732.923.7380

Monmouth Medical Center Outpatient Diagnostic Imaging Services
CT Scan, MRI, Ultrasound, X-Ray
300 Second Avenue (inside the hospital)
Long Branch, NJ 07740
732.923.6800

Ocean Township

Monmouth Medical Center Laboratory and Diagnostic X-Ray Services
1910 Hwy 35 South
Oakhurst, NJ 07755
732.775.1024

Shrewsbury

Shrewsbury Diagnostic Imaging*
1131 Broad Street
Shrewsbury, NJ 07702
732.578.9640

**Monmouth
Medical Center**

Jacqueline M. Wilentz
Comprehensive Breast Center



www.monmouthwilentzbreastcenter.com

Jacqueline M. Wilentz Comprehensive Breast Center



**Monmouth
Medical Center**

Jacqueline M. Wilentz
Comprehensive Breast Center



2014 - 2017
WOMEN'S CHOICE AWARD*
AMERICA'S BEST BREAST CENTERS



Comprehensive Breast Health Services

The Jacqueline M. Wilentz Comprehensive Breast Center at Monmouth Medical Center was introduced in 1994 to bring together under one roof all preventive, diagnostic, treatment, rehabilitation, psychosocial and educational services for women concerned about their breast health. Our goal is to provide our patients with clinically excellent and compassionate care in a supportive and comfortable setting.

- The Jacqueline M. Wilentz Comprehensive Breast Center is a certified quality breast center of excellence — the highest certification level offered by the National Quality Measures for Breast Centers (NQMBC). The Wilentz Center is one of just two New Jersey facilities and is among a handful in the nation to achieve this top national certification. In 2010, the Wilentz Center became the first facility in New Jersey and the 10th in the nation to be accredited as a Certified Quality Breast Center by NQMBC.
- Joining only a handful of breast imaging centers across the nation, the Wilentz Center was designated a Breast Imaging Center of Excellence by the American College of Radiology's (ACR) Commission on Quality and Safety and the Commission on Breast Imaging. Additionally, the Wilentz Center is the first facility in New Jersey and just the 20th in the nation to earn ACR's Gold Seal Accreditation for breast MRI and also holds ACR accreditation for mammography, breast ultrasound and stereotactic breast biopsy.
- The Wilentz Center also is the first center in Monmouth and Ocean counties to be granted a three-year full accreditation designation by The National Accreditation Program for Breast Centers (NAPBC) for "providing the highest quality evaluation and management of patients with breast disease."
- Since its debut, the Jacqueline M. Wilentz Comprehensive Breast Center has passed the Food and Drug Administration (FDA) inspection for being in total compliance with stringent requirements under the federal Mammography Quality Standards Act (MQSA) with "no" deficiencies — a success achieved by less than 20 percent of the facilities in the country inspected by the FDA.
- The Wilentz Center is a recipient of the Women's Choice Award as one of America's Best Breast Centers, acknowledging its dedication to providing

What We Have Achieved

The Jacqueline M. Wilentz Comprehensive Breast Center has earned a host of quality recognitions that illustrate our commitment to high quality care, including:

- The Leon Hess Cancer Center at Monmouth Medical Center holds the Joint Commission's Gold Seal of Approval for its comprehensive breast cancer treatment program. This prestigious certification recognizes the Leon Hess Cancer Center for meeting all national standards for quality and safety for breast-cancer-specific care. To earn the Gold Seal of approval, the Leon Hess Cancer Center, in conjunction with the Jacqueline M. Wilentz Comprehensive Breast Center, underwent a rigorous on-site survey that reviewed credentials of staff and physicians, processes of care and performance improvement initiatives.



exceptional patient care and treatment, earning the award for four consecutive years by having met the NAPBC standards from the American College of Surgeons.

What We Offer

The Jacqueline M. Wilentz Comprehensive Breast Center is able to achieve an optimal level of care that is offered nowhere else in the region. We offer the latest in technology and services, including:

- Comprehensive care of the breast cancer patient by a multidisciplinary panel of breast and reconstructive surgeons, medical and radiation oncologists, radiologists and pathologists who meet weekly to prospectively consider all elements of the patients' care. Additionally, this provides an opportunity for multiple second opinions for each patient.
- A Breast Cancer High Risk Program with access to genetic testing.
- Access to the latest clinical research and trials.
- The latest in screening and diagnostic imaging technologies, including:
 - All digital screening and diagnostic mammography with emailed results.
 - Tomosynthesis – mammography utilizing advanced 3D breast imaging that provides the earliest detection of breast cancer.
 - Breast Specific Gamma Imaging (BSGI) – a molecular breast imaging technique for identifying cancerous lesions in the breast, particularly in women who were previously challenging to diagnose.
 - Computer Aided Detection (iCAD) Mammography – a system that helps our radiologists recognize subtle changes in breast tissue.
 - Breast MRI – an additional screening tool reserved for women who are at high risk for breast cancer due to family history and/or a mutation in genes such as BRCA1 or BRCA2. Diagnostic breast MRI is offered as well.
 - Whole-Breast Ultrasound — an adjunct to mammography for screening women with dense breast tissue.
 - High-Resolution Breast Ultrasound – a diagnostic tool that provides a picture of the breast tissue, including the area closest to the chest wall, which can be difficult to image through a mammogram alone.
 - Ultrasound-Guided Core Needle or Fine-Needle Biopsy – an advanced, minimally invasive and virtually painless procedure that is used in place of surgical biopsy to determine if a tumor is cancerous.
 - Prone Stereotactic Breast Biopsy with Tomosynthesis – a first for New Jersey – a advanced biopsy system with a high degree of accuracy that is also a virtually painless alternative to surgery.
 - On-site bone density testing.



About Screening and Diagnostic Mammography

Screening Mammography

For patients with no abnormal breast symptoms, a screening mammogram offers the best opportunity for early detection of breast cancer. The procedure takes just a few minutes and most screening mammograms do not require a physician order. Once a

baseline is established, future mammograms are compared to detect changes through the aging process. Screening mammography services are available at all Jacqueline M. Wilentz Breast Centers and all mammograms are interpreted by the centers' team of dedicated breast imagers. *(See details on following pages).*



Diagnostic Mammography

While routine mammography screenings are offered to patients without symptoms, diagnostic mammograms are tailored to patients with symptoms of benign breast disease or breast cancer, or who are at high risk for breast cancer. Diagnostic mammography services are only available at The Jacqueline M. Wilentz Comprehensive Breast Center at Monmouth Medical Center. The Breast Center's board-certified breast imagers specialize in the technical aspects involved in diagnosing breast problems. They are joined by a staff of highly trained, licensed mammography technologists and nurses — all of whom are sensitive to the needs and concerns of every patient.

The Dedicated Breast Imagers of the Jacqueline M. Wilentz Comprehensive Breast Center

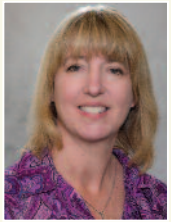


Cynthia Barone, D.O.

Dr. Barone is a board-certified radiologist who received her medical degree from the University of Medicine and Dentistry of New Jersey, School of Osteopathic Medicine. Dr. Barone completed a diagnostic radiology residency at Pennsylvania Hospital, Philadelphia, where she was chief resident. She was fellowship trained in body imaging at the Hospital of the University of Pennsylvania. Dr. Barone's special interests

include women's imaging, including mammography and obstetrical and gynecological ultrasound and stereotactic breast biopsy. She also is well versed in breast MRI.

She holds board certification from the American Board of Radiology and her professional memberships include the Radiological Society of North America, the American College of Radiology, the American Roentgen Ray Society and the Society of Breast Imagers.



Jennifer L. Keedy, M.D.

Board-certified diagnostic radiologist Dr. Keedy, received her medical degree from the University of Miami School of Medicine. She completed a diagnostic radiology residency at Beth Israel Hospital/Harvard Medical School, Boston, and a health services research fellowship in women's imaging from the Departments of Health Policy and Radiology in Philadelphia. Dr. Keedy joined Monmouth from Pinecrest Imaging

Associates in Pembroke Pines, Fla., where she specialized in women's imaging, including ultrasound and stereotactic biopsies, digital mammography and breast ultrasound. She holds board certification from the American Board of Radiology.



Alexander B. King, M.D.

Board-certified diagnostic radiologist, Dr. King, received his medical degree from the Rutgers University: Robert Wood Johnson Medical School. He completed a diagnostic radiology residency at Saint Barnabas Medical Center in Livingston, N.J., where he served as Chief Resident. He completed a radiology economics fellowship at the American College of Radiology. Dr. King specializes in Breast Imaging

and Intervention. Prior to joining Monmouth, he completed a breast imaging and intervention fellowship at Barnabas Health Ambulatory Care Center in Livingston, N.J. He holds board certification from the American Board of Radiology, and his professional memberships include the Robert Wood Johnson Medical School Student Government Association and the American College of Radiology.



Yasmeen K. Shariff, M.D.

Dr. Shariff received her medical degree from Temple University School of Medicine, Philadelphia. She completed her residency in radiology at Allegheny General Hospital, Pittsburgh, and her fellowship at Pittsburgh's Western Pennsylvania Hospital, where she trained under Ellen B. Mendelson, M.D., director of breast imaging. She has been board certified as a diplomat of the American Board of Radiology since 1997.

Prior to joining the staff of Monmouth Medical Center, Dr. Shariff was a staff radiologist at Princeton Medical Center as well as a practicing radiologist at Princeton Radiology Associates. She is a member of American College of Radiology, Society of Breast Imaging, Radiological Society of North America and the American Roentgen Ray Society.

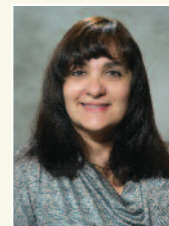
She specializes in women's imaging, including high-volume mammography, stereotactic mamotome and ultrasound-guided breast biopsies, galactograms and cyst aspirations. She is the Director for Breast MRI and Diagnostic Ultrasound at Monmouth Medical Center.



Ilona H. Hertz, M.D.

Board-certified diagnostic radiologist, Dr. Hertz, received her medical degree from the Downstate Medical School - SUNY, New York. She completed a diagnostic radiology residency at Mount Sinai Hospital, New York.

Dr. Hertz joined Monmouth from Manhattan Diagnostic Radiology, New York, where she specialized in women's imaging. She holds board certification from the American Board of Radiology and her professional memberships include the Radiological Society of North America, the American College of Radiology and Society of Breast Imaging.



Leny M. Rada-Banat, M.D.

Leny M. Rada-Banat, M.D., is a board-certified radiologist who received her medical degree from Ross University School of Medicine. Dr. Rada-Banat completed residencies in both internal medicine and radiology at Saint Barnabas Medical Center in Livingston, N.J. She completed a fellowship in woman's imaging at the same hospital, during which time she conducted significant research in adenomyoepithelioma of

the breast. Dr. Rada-Banat holds board certification from the American Board of Internal Medicine and the American Board of Radiology. She joined Monmouth from Northern Monmouth County Medical Associates P.C. in Red Bank, N.J., where she specialized in women's imaging.

About Our Comprehensive Approach to Breast Cancer Care

At Monmouth Medical Center, a team of highly qualified physicians treat a large volume of breast cancer patients and stress attention to detail, consideration of all treatment options, and a full panel discussion at each point in treatment through weekly multidisciplinary team meetings. Each patient's individual circumstances are carefully considered when making treatment recommendations, and the ability for each physician to consult immediately with any of our breast center physicians has expedited care for our patients. Social workers, nurse navigators, and a genetic counselor are readily available to assist patients and their families.

Breast cancer care is provided at the comprehensive breast center located on the hospital campus, ensuring access to the advanced diagnostic and therapeutic services that an academic medical center can provide. These include Monmouth's highly regarded laboratory and radiology department, which offers PET/CT imaging through Monmouth's affiliation with Shrewsbury Diagnostic Imaging.



Breast Surgery

Monmouth offers advanced breast surgery led by a team of the region's finest board-certified surgeons who specialize in breast surgery. Monmouth-affiliated breast surgeons were the first in the region to offer protocol-tested sentinel lymph node biopsy — an alternative to major surgery in determining whether a woman's breast cancer has spread to her lymph nodes. Breast surgery is tailored to each patient's specific needs and ranges from breast conservation to mastectomy with reconstruction by a panel of board-certified plastic and reconstructive surgeons. Additionally, Monmouth's team of dedicated breast imagers perform needle localization of breast lesions to help surgeons pinpoint the target area during surgery.

Surgery is usually the first line of attack against breast cancer, and Monmouth's team of breast surgeons, radiation oncologists, and medical oncologists feel that combining

meticulous surgical technique, state-of-the-art radiation therapy and appropriate chemotherapy contributes to the center's extremely low local recurrence rates after lumpectomy. In fact, our documented results indicate one of the lowest local recurrence rates in the nation. Following surgery and treatment, patients are carefully followed through regular visits with the surgeon and medical and radiation oncologist.

Pathology

Additionally, Monmouth Medical Center's team of dedicated pathologists offer a high level of breast cancer tissue analysis that allows meticulous examination of the adequacy of the surgical removal of the tumor.

Breast Reconstruction Surgery

When a mastectomy is necessary, techniques utilizing limited skin incisions are used whenever possible to maximize cosmetic outcomes. The Wilentz center's team of board-certified plastic and reconstructive surgeons offer an array of surgical options for breast reconstruction, including implant-based reconstruction and autologous tissue flaps using the patient's own tissue from the back or abdominal area. An individualized approach is used for each patient with emphasis on return to normal activities with the best possible cosmetic results.

Medical Oncology

Our board-certified medical oncologists are experienced in every phase of cancer treatment management, including planning, coordination and collaboration. They work closely with our surgeons and radiation oncologists to ensure patients receive the most effective treatment — whether it involves one or more cancer therapies, given simultaneously or concurrently. By remaining at the forefront of ongoing research in novel cancer therapies, these physicians participate in numerous national clinical trials of promising new and experimental medical treatments.

In addition, our medical oncologists are supported by highly skilled nurses and other allied health professionals in both outpatient and inpatient settings to provide individualized care that meets the medical, physical and psychological needs of patients before, during and after treatment. Our chemotherapy suite in the Leon Hess Cancer Center at Monmouth Medical Center provides a comfortable setting to meet the special needs of breast cancer patients receiving outpatient chemotherapy treatment.

Radiation Oncology

As the region's pioneer in delivering leading-edge radiation therapy, the team of board-certified radiation oncologists at the Institute for Advanced Radiation Oncology at Monmouth's Leon Hess Cancer Center continues to gain international, national and state recognition for its clinical application and research of breakthrough methods of radiation therapy.

Monmouth's Institute for Advanced Radiation Oncology is located immediately adjacent to the breast center. Its board-certified radiation oncologists are actively involved in national clinical trials that are investigating a full spectrum of radiation therapies, as well as identifying ways to reduce the side effects of treatment.

Breast Cancer High Risk Program

The Jacqueline M. Wilentz Breast Center offers patients the latest technology available for assessing breast cancer risk. Patients visiting any of our facilities for a mammogram are provided with a tablet-style computer to check off answers to questions related to breast history and family cancer history. Based on guidelines published by the National Comprehensive Cancer Network, the data gathered helps us estimate each patient's risk of gene mutation as well as lifetime risk of developing breast cancer. Risk assessment reports are then provided to both patients and physicians.

Education, which includes risk reduction strategies and medication management, support, counseling and clinical monitoring are offered to women who have strong family histories of breast cancer, have had previous breast biopsies or are otherwise at higher risk for developing breast cancer. Genetic testing and counseling are available through the Breast Cancer High Risk Program.

Bone Density Testing

Bone density testing is a safe, quick, non-invasive, painless procedure that detects osteoporosis at its earliest stages, when treatment is most effective. The Jacqueline M. Wilentz Breast Centers are equipped with a DEXA (Dual Energy X-Ray Absorptiometry) scanner, the most advanced densitometry equipment available.

Recognized for its accuracy, low radiation exposure and ability to measure both hip and spine, DEXA scans are considered the gold standard of bone density measurements. These tests are also the only means of monitoring the success of treatment or detecting the effects of other conditions or medications that can damage the skeleton.

Mind, Social and Spiritual Support

Our specialists provide counseling and support, and make referrals to area community resources to help patients and their families. Licensed clinical social workers lead breast cancer support groups to give patients a chance to talk with others who are in various stages of treatment. The center also participates in other breast cancer programs in conjunction with the American Cancer Society, such as "Look Good, Feel Better."

Patient Navigators

The patient navigator is committed to improving the overall experience of patients and their families. Our nurse navigator provides one-on-one assistance to breast center patients, and works to eliminate barriers to timely screenings, diagnosis and treatments for each individual.

The patient navigator can:

- Help patients and their families navigate through the health care system.
- Increase accessibility to available health care services.
- Connect patients with community resources, support, and health education.
- Direct patients to the social worker for financial issues and assistance.
- Assist patients in tracking and keeping scheduled appointments.
- Streamline communication between patients and their providers.
- Assist patients with their treatment journey to obtain the best possible care and experience



Where We Are

In addition to our main location on the Monmouth Medical Center campus located at 300 Second Avenue in Long Branch, the Jacqueline M. Wilentz Comprehensive Breast Center offers satellite locations for the convenience of our patients.

- Jacqueline M. Wilentz Breast Center at Colts Neck, located at 310 Route 34 South, next to Delicious Orchards.
- Jacqueline M. Wilentz Breast Center at Howell, located at 4013 Route 9 North, Suite 2S, Aldrich Plaza Shopping Center.
- Jacqueline M. Wilentz Breast Center at Lakewood, located at 600 River Avenue at Monmouth Medical Center, Southern Campus.

All locations offer screening mammography services in a comfortable and compassionate setting. All imaging exams conducted at our satellite locations are performed by experienced mammography technologists and interpreted by Monmouth Medical Center's highly skilled radiologists.