

RWJBarnabas HEALTH

Residency Annual Report 2020–2021

Pharmacy Residency Programs:

1. Barnabas Health Behavioral Health Center
2. Clara Maass Medical Center
3. Community Medical Center
4. Corporate Pharmacy
5. Jersey City Medical Center
6. Monmouth Medical Center
7. Newark Beth Israel Medical Center
8. Qualitas Specialty Pharmacy
9. RWJ University Hospital New Brunswick
10. RWJ University Hospital Somerset
11. Saint Barnabas Medical Center



Table of Contents

Pharmacy Residency Program Information.....	3
Corporate Pharmacy Leadership.....	4
Barnabas Health Behavioral Health Center	6
Clara Maass Medical Center.....	8
Community Medical Center.....	10
Corporate Pharmacy	13
Jersey City Medical Center.....	15
Monmouth Medical Center.....	17
Newark Beth Israel Medical Center.....	19
Qualitas Specialty Pharmacy.....	21
Robert Woods Johnson—New Brunswick.....	23
Robert Woods Johnson—Somerset.....	29
Saint Barnabas Medical Center.....	31
Residency Celebrations.....	35
ASHP Pharmacy Residency Virtual Recruitment.....	36
RWJBH Residency Leadership Forum.....	37
Teaching & Learning Certificate Program.....	38
COVID-19 Vaccination Response.....	39
RWJBH Six Principles.....	40
Residency Annual Report Committee.....	45

Pharmacy Residency Program Information

RWJBarnabas Health offers American Society of Health-System Pharmacists (ASHP)-accredited PGY-1 and PGY-2 pharmacy residency programs. Through these programs, residents are given the opportunity to work in interdisciplinary care teams to enhance their skills in evidence-based, patient-centered medication management, and to perform pharmacy practice research that is presented at ASHP's Midyear Meeting and at the Eastern States Conference for pharmacy residents and preceptors.

The purpose of a pharmacy residency is to train highly motivated, team-oriented pharmacy residents on advanced patient care skills, teaching techniques, and practice-based research methods, preparing them to be leaders of change in the medical and academic communities. The residency provides residents the opportunity to participate in multidisciplinary practice and has been designed to meet all standards and requirements of the American Society of Health-System Pharmacists.

The RWJBarnabas Health residency programs began with one resident in 1993 and has expanded to 23 residents in 2021.

Learning experiences offered include: Administration, Ambulatory Care, Cardiology, Community Outreach, Critical Care, Drug Information, Emergency Medicine, General Hospital Pharmacy, Geriatrics, Infectious Disease, Internal Medicine, Oncology, Pediatrics, Psychiatry, Specialty Pharmacy, Transplant, and Transitions of Care

- Clara Maass Medical Center (2)
- Community Medical Center (2)
- Jersey City Medical Center (2)
- Monmouth Medical Center (2)
- Newark Beth Israel Medical Center (2)
- Qualitas Pharmacy Services (1)
- RWJ New Brunswick (2)
- RWJ Somerset (2)
- Saint Barnabas Medical Center (4)

As of 2022, each RWJBarnabas Health Facility offers the following number of PGY-2 pharmacy residency positions per year:

- Barnabas Health Behavioral Health Center: Psychiatry (1)
- Community Medical Center: Critical Care (1)
- Corporate Pharmacy: Ambulatory Care (1)
- Saint Barnabas Medical Center: Geriatrics (1)

Additionally, RWJBarnabas has partnered with the Ernest Mario School of Pharmacy at Rutgers University to serve as practice sites for the following PGY-2 programs:

- RWJ New Brunswick: Emergency Medicine (2)
- RWJ New Brunswick: Drug Information (2)

Indu Lew, PharmD

Senior Vice President and
Chief Pharmacy Officer



“Pharmacy schools provide practitioners with the up to date clinical knowledge, but a limited time to apply their knowledge and skills. A residency gives an opportunity for the pharmacy resident to further apply their clinical education consistently in a safe, structured setting. The best way to get better at something is through deliberate practice, essentially purposefully practicing in order to get better. A pharmacy residency program provides such an environment. You are doing activities recommended by experts to develop specific abilities, identifying weaknesses and working to correct them, and intentionally pushing yourself out of your comfort zone. Deliberate practice is often guided by an expert, skilled coach, mentor, program director and preceptor. These mentors are offering feedback on specific ways to improve and pathways to success. You all have had varied experiences over the last year, which continues to mold and influence your growth. As you embark on different journeys, remember to embrace the “3 P’s.” Align your passion with purpose on the foundation of a plan. I wish you all the greatest success.”

- Indu Lew

**Jennifer Sternbach,
PharmD, BCPS, BCACP**

Corporate Director of
Clinical Pharmacy Services



I recently heard the following quote: “the way you do anything should be the way you do everything.” My hope as you set forth on your next adventure, whether it be continued training or working, is that you keep this in mind. Bring your full-self each and every day to everything that you do. Armed with the combination of the guidance and teaching from your program directors, preceptors and mentors, as well as your own passion and talent, you have the all the tools needed to continue to carry the mission of improving patient care. It has been our privilege to be a part of your training and remember that no matter where you go, your RWJBH family is here.

-Jennifer Sternbach

**Jessica N. Hill, PharmD, FASHP,
BCPS, BCACP**

Corporate Assistant Director of
Clinical Pharmacy



My advice for the residency class of 2021 is to stay open to the journey that is life. Franklin D. Roosevelt once said, “Calm seas never made a good sailor.” This year has proven that time and again. You all have experienced so much in such a short time. But you are stronger and more agile because of the challenges you have overcome. All of our lives will have many more twists, turns and surprises – more than we can even imagine today. Your RWJBH family believes in you and your ability to be successful and fulfilled personally and professionally, no matter the circumstances.”

-Jessica Hill

**Joseph Cavanaugh, PharmD,
BCPS, BCCCP**

Assistant Director of Clinical Pharmacy
Services & PGY-1 Residency Director (CMC)
Residency Leadership Forum Coordinator



“The road to success is never straight and in order to reach long term goals, you may need to embrace opportunities you would normally avoid. Never be afraid to take on challenging or new opportunities as they will always be beneficial, even if it doesn’t seem like it at the time. Most importantly, whatever you do, make sure you leave a positive impact on those you work with and those around you.”

-Joseph Cavanaugh

Barnabas Health Behavioral Health Center



Kim Walsh, RPh, MBA
Director of Pharmacy Services



The Barnabas Health Behavioral Health Center (BHBHC) is a 100-bed acute psychiatric care facility located in Toms River, NJ. BHBHC offers both inpatient and outpatient psychiatric services to the residents of Ocean County, NJ. BHBHC was the second facility in the network to establish a PGY-1 residency program and has recently converted into a specialized PGY-2 psychiatric residency program. BHBHC offers a variety of learning experiences in both voluntary and involuntary adult psychiatric medicine, substance abuse management, dual diagnosis treatment, adolescent & pediatric psychiatry, as well as the opportunity to focus on geropsychiatry. Pharmacy residents are also provided additional learning experiences in hospital administration, focused research, and board certification preparation.

**Henry Leach, PharmD,
BCPP**

PGY-2 Psychiatric Residency
Program Director
Clinical Coordinator



What advice do you have for this year's residents as they embark on their careers?

"Stay true to your heart and always do the right thing!"

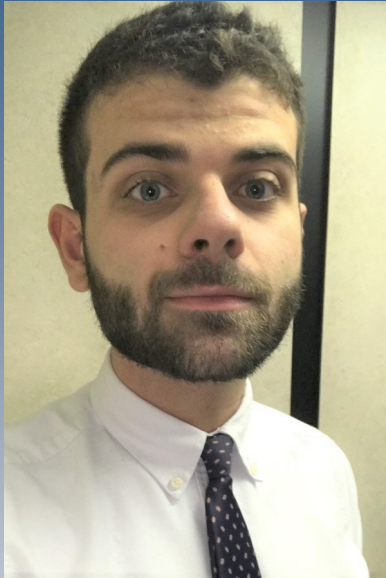
-Kim Walsh

"You get out of anything what you put in. Nothing worthwhile was ever easy."

-Henry Leach

**Michael Mandarino,
PharmD, BCPS**

PGY-2 Psychiatric
Pharmacy Resident



Hometown: Bronx, NY

Pharmacy School: Albany College of Pharmacy and Health Sciences—Colchester Campus

Favorite Hobbies: Playing the violin, going on hikes, and spending time on the water

PGY-1 Program: Montefiore Nyack Hospital

Research Project: (1) The use of intramuscular ketamine for refractory agitation management in a psychiatric hospital (2) Influence of chronobiotic-dosed melatonin on key outcomes during major neurocognitive disorder geriatric-related admissions

PGY-2 Residency Leadership Forum Presentation: Research and Statistics

Future Directions: Pursue a position as a neuropsychiatric clinical pharmacist

Clara Maass Medical Center



Mona Philips, RPh, MAS

Director of Pharmacy Services



Mitesh Patel, PharmD, BCCCP

Clinical Coordinator
PGY-1 Residency Program Director



Ruben Patel, PharmD, BCPS, BCCP

Critical Care Pharmacy Specialist
PGY-1 Residency Program Coordinator



Clara Maass Medical Center (CMMC) is a RWJBarnabas Health facility located in Belleville, NJ. This 469-bed state-of-the-art campus provides a complete continuum of care to residents of northern New Jersey. The medical center is affiliated with multiple colleges of pharmacy which include Ernest Mario School of Pharmacy at Rutgers University, Philadelphia College of Pharmacy, and Fairleigh Dickinson College of Pharmacy. The pharmacy residency program at Clara Maass provides an environment designed to produce competent and compassionate health-system pharmacists. The pharmacy department has maintained an ASHP accredited PGY-1 residency program since 2007. The program includes a robust number of learning experiences in acute care to help prepare residents for the changing health care field. The learning experiences include Hospital Pharmacy, Internal Medicine I and II, Infectious Disease, Administration, Drug Information, Medical Emergency and Response, Emergency Medicine, Critical Care, and Cardiology.

What advice do you have for this year's residents as they embark on their careers?

"Treat every patient the same as you would want your family member to be treated and treat everyone you meet with dignity and respect.

-Mona Philips

"Be curious. Not judgmental."

-Mitesh Patel

"Dare to be. When something seems difficult, dare to do it anyway. Dare to be the best that you can be."

-Ruben Patel

Clara Maass Medical Center



Lakhini Vyas, PharmD

PGY-1 Pharmacy Resident



Hometown: Paramus, NJ

Pharmacy School: Ernest Mario School of Pharmacy—Rutgers University

Favorite Hobbies: Reading, spending time with family and friends, traveling, and trying new foods!

Research Project: Beta-lactam allergy assessment and skin testing (BLAAST program)

Future Directions: Pursue a career as a clinical pharmacist

Sonia Kim, PharmD

PGY-1 Pharmacy Resident



Hometown: Fort Lee, NJ

Pharmacy School: Ernest Mario School of Pharmacy—Rutgers University

Favorite Hobbies: Singing and playing guitar, brewing kombucha

Research Project: Acute bacterial skin and skin structure infection pharmacotherapy outcome and length of stay avoided with utilization of dalbavancin eligibility criteria (ABSOLUTE)

Future Directions: Pursue a career as a clinical pharmacist (within oncology or transplant medicine)

Community Medical Center



Lynne Goldstein, PharmD

Director of Pharmacy Services



Joseph Cavanaugh, PharmD, BCPS, BCCCP

Assistant Director of Clinical Pharmacy Services
PGY-1 Residency Program Director



Jesse B. Sullivan, PharmD, BCPS, BCCCP

PGY-2 Critical Care Residency Program Director



Community Medical Center (CMC) is a 596-bed acute care hospital. CMC has evolved into the state's largest nonteaching hospital and Ocean County's largest and most active health care



facility. The hospital's mission is dedicated to advancing the quality of life and health of our community by providing the highest quality of health care and related services. The hospital's vision is to be the premier health care provider committed to quality and compassionate care. Our commitment to keeping people healthy is demonstrated by our active community education and outreach programs. The Pharmacy Practice Residency is a 12-month, PGY-1 residency program that offers opportunities for residents to expand their clinical knowledge, research and presentation skills. Community Medical Center PGY-1 residents also have the opportunity to work with the PGY-2 Critical Care resident throughout the residency year. CMC is one of the only PGY-2 Critical Care residency programs in New Jersey.

What advice do you have for this year's residents as they embark on their careers?

"The road to success is never straight and in order to reach long term goals, you may need to embrace opportunities you would normally avoid. Never be afraid to take on challenging or new opportunities, as they will always be beneficial, even if it doesn't seem like it at the time. Most importantly, whatever you do, make sure you leave a positive impact on those you work with and those around you."

-Joseph Cavanaugh

"Focus on growing a broad and solid foundation of experiences this year. This is the foundation on which your future career will be built. Go beyond the expectations of your preceptors and push yourself to expand your boundaries. Success is a deliberate action and never an accident. "

-Jesse Sullivan

Sandra Eid, PharmD

PGY-1 Pharmacy Resident



Hometown: Bayonne, NJ

Pharmacy School: Fairleigh Dickinson University School of Pharmacy and Health Sciences

Favorite Hobbies: Cooking

Research Project: Impact of a pharmacist-driven CAM-ICU monitoring and management toolkit on patient outcomes at a community hospital

Future Directions: PGY-2 critical care pharmacy resident at RWJBH Community Medical Center

Jennifer Weiss, PharmD

PGY-1 Pharmacy Resident



Hometown: Marlboro, NJ

Pharmacy School: University of Rhode Island College of Pharmacy

Favorite Hobbies: Hiking, specifically in New England!

Research Project: (1) Evaluation of a pharmacist-driven risk factor tool for the prevention of hospital-onset *Clostridium difficile* infection in a community hospital
(2) Ropinirole-induced amnesia and hallucinations: a case report

Future Directions: PGY-2 ambulatory care pharmacy resident at RWJBH

Kayla Riggs, PharmD

PGY-2 Critical Care
Pharmacy Resident



Hometown: Shepherdsville, KY

Pharmacy School: Sullivan University College of Pharmacy

Favorite Hobbies: Working out

PGY-1 Program: Riverside Regional Medical Center

Research Project: (1) Back to the basics: pantoprazole continuous infusion versus intermittent bolus in the management of upper gastrointestinal bleeding (2) Evaluation of the efficacy of tocilizumab in critically ill COVID-19 patients

PGY-2 Residency Leadership Forum Presentation: Interviewing

Future Directions: Pursue a position as a critical care clinical pharmacist

Alyssa Gallipani, PharmD, BCACP

PGY-2 Ambulatory Care Residency
Program Director



The PGY-2 Ambulatory Care pharmacy residency program builds upon PGY-1 education to develop independent practitioners in the ambulatory care setting. The RWJBH Ambulatory Care division is continuing to expand across NJ with sites located in Bridgewater, Eatontown, Florham Park, Jersey City, Livingston, and Shrewsbury. The program is affiliated with multiple colleges of pharmacy of which include Ernest Mario School of Pharmacy at Rutgers University and Fairleigh Dickinson College of Pharmacy. Graduates of this program will be prepared for advanced patient care, population health initiatives, academic positions, and board certification. The year consists of a variety of learning experiences including Primary Care I-III, Asian Health/ Viral Hepatitis, Infectious Disease, Specialty Pharmacy, Population Health, Research, Teaching and Education, Management and Leadership.

What advice do you have for this year's residents as they embark on their careers?

"As you move forward, don't forget the people who were part of your residency journey. Your preceptors, technicians, medical professionals, and especially your co-residents. They were the ones by your side who watched you grow and encouraged you. They are proud of who you have become. Think of them, thank them, and stay in touch. You are always a part of the RWJBH family."

- Alyssa Gallipani

Jennifer Sternbach, PharmD, BCPS, BCACP

Corporate Director of Clinical Pharmacy
Services
Residency Program Coordinator



Lalitha Sukumar, PharmD

PGY-2 Ambulatory Care

Pharmacy Resident



Hometown: Cherry Hill, NJ

Pharmacy School: Philadelphia College of Pharmacy

Favorite Hobbies: Traveling

PGY-1 Program: Clara Maass Medical Center

Research Project: (1) Considerations for pharmacist integrations into Medicate annual wellness visits within an integrated medical group (2) Evaluation of voluntary integration of clinical pharmacy services in a behavioral health clinic (3) Evaluation of impact of pharmacist impact on diabetes management in a system medical group

PGY-2 Residency Leadership Forum Presentation: Conflict Styles

Future Directions: Pursue a position as an ambulatory care clinical pharmacist

Jersey City Medical Center

RWJBarnabas
HEALTH

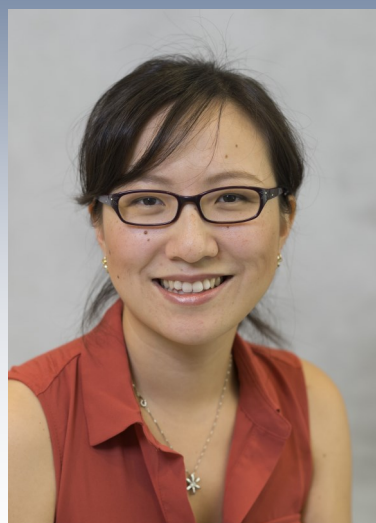
**Maria Devivo, PharmD,
MPA, BCPS, BCACP**

Director of Pharmacy Services



**Sandy Moreau,
PharmD, BCPS**

Clinical Coordinator,
PGY-1 Residency Program Director



Jersey City Medical Center (JCMC) is a 314-bed hospital located in Jersey City, NJ. Notable hospital services include Regional Level II Trauma Center, Comprehensive Cardiac Center, State-designated Stroke Center, Level III Neonatal Intensive Care Unit, and Regional Orthopedic Institute. The Pharmacy Department is open 24 hours a day, 7 days a week. The department is structured in a centralized operation model PLUS decentralized unit-based and specialty-based clinical pharmacist services. There are 6 hospital-based clinical specialists and 2 Rutgers faculty members servicing areas including Hospitalists Group, 2 Medical/Surgical Floors, Critical Care Unit, Emergency Department, Infectious Diseases/Antimicrobial Stewardship, Psychiatry, and HIV/Ambulatory Care Clinic. In addition to clinical specialists who precept in the residency program, the Clinical Coordinator (also the Residency Program Director), the Director of Pharmacy, Informatics Pharmacist, and Pharmacy Supervisor all serve as preceptors for the Residency Program as well.

What advice do you have for this year's residents as they embark on their careers?

"Put yourself in the other person's shoes"

Being empathetic is vital to providing compassionate care to our patients as well as fostering collaboration between members of the healthcare team.

- Maria Devivo

"When you deliver a presentation, you have to tell a story."

This advice always helped me ground my perspective during public speaking preparation and guide my presentation delivery.

- Sandy Moreau

Mary Ibrahim, PharmD

PGY-1 Pharmacy Resident



Hometown: Staten Island, NY

Pharmacy School: Massachusetts College of Pharmacy and Health Sciences

Favorite Hobbies: Reading and swimming

Research Project: Decreasing the incidence of delirium in older adults by optimizing pharmacologic interventions

Future Directions: PGY-2 in geriatrics at LECOM/Millcreek Community Hospital

Michelle Mei, PharmD

PGY-1 Pharmacy Resident



Hometown: New York, NY

Pharmacy School: The Arnold and Marie Schwartz College of Pharmacy and Health Sciences

Favorite Hobbies: Reading and hiking

Research Project: Using a pharmacist assessment tool to clarify penicillin allergy and its subsequent effects on antimicrobial selection

Future Directions: Pursue a position as a clinical pharmacist

Scott Mathis, PharmD

Regional Director of Pharmacy



Monmouth Medical Center (MMC) is a 527 bed teaching hospital located two blocks from the ocean in Long Branch, New Jersey. MMC is one of New Jersey's largest academic medical centers and is a teaching affiliate of



the Rutgers University School of Medicine. From its earliest days, MMC has been a leader in surgical advancement and has introduced many technological firsts to the region, including robotic surgery and other minimal invasive techniques. In 2020, MMC received Magnet Recognition for nursing excellence from the American Nurses Credentialing Center. MMC is the only New Jersey Hospital to be named one of the nation's 100 top hospitals by IBM Watson Health in 2019. The pharmacy residency is a one year PGY-1 program that offers core and elective rotations in Ambulatory Care, Behavioral Health/Psychiatry, Critical Care, Drug Information, Emergency Medicine, Infectious Diseases, Internal Medicine, Administration, and others. The Pharmacy Resident routinely participates in interdisciplinary rounds, hospital committees, clinical initiatives, educational programs, and other leadership and direct patient care activities. There are numerous opportunities for precepting and lecturing pharmacy students, as well as the chance to obtain a professional academic teaching certificate from the Ernest Mario School of Pharmacy at Rutgers.

Hoytin Lee Ghin, PharmD, BCPS

Assistant Director of
Clinical Pharmacy Services,
PGY-1 Residency Program Director



What advice do you have for this year's residents as they embark on their careers?

"Approach everything with a questioning attitude."

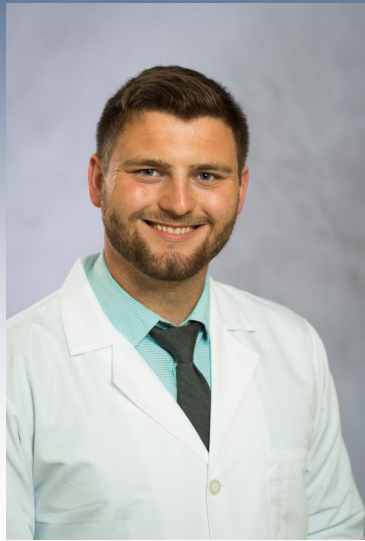
- **Scott Mathis**

The completion of your residency, is the end of one chapter of your professional journey and the beginning of the next. "We shall not cease from exploration, and the end of all our exploring will be to arrive where we started and know the place for the first time." T.S. Elliot

- **Hoytin Lee Ghin**

Brian Bishop, PharmD

PGY-1 Pharmacy Resident



Hometown: Grafton, MA

Pharmacy School: University of Rhode Island School of Pharmacy

Favorite Hobbies: Travel (favorite place: Thailand)

Research Project: (1) Fixed-dose 4-factor prothrombin complex for reversal of anticoagulant induced bleeding
(2) Evaluation of pharmacist-driven intravenous to oral acetaminophen protocol

Future Directions: Pursue a career as an informatics pharmacist

Hasna Esseghir, PharmD

PGY-1 Pharmacy Resident



Hometown: Lawrenceville, NJ

Pharmacy School: Ernest Mario School of Pharmacy—Rutgers University

Favorite Hobbies: Traveling, reading, baking, and spending time with family and friends.

Research Project: (1) Prospective analysis of a pharmacy driven drug monitoring program to optimize alvimopan use
(2) Evaluation of electrocardiogram (ECG) monitoring in high risk patients taking known QTc prolonging medications

Future Directions: Clinical pharmacist at Monmouth Medical Center

Newark Beth Israel Medical Center



Sandra Richardson, PharmD, CCP

Director of Pharmacy Services



Kayla Torppey, PharmD, BCPS

Internal Medicine Clinical Specialist,
PGY-1 Residency Program Director



Established in 1901, Newark Beth Israel Medical Center is a 665-bed teaching hospital that provides comprehensive health care for the region. It is home to one of the nation's ten



largest heart transplant centers, RWJBarnabas Health's Heart Failure Treatment and Transplant Program, New Jersey's only Advanced Lung Disease and Transplant Program, the Children's Hospital of New Jersey, and a Valve Center that performs more cardiac valve procedures than any other center in the state. The PGY-1 Pharmacy Residency program at Newark Beth Israel Medical Center is an ASHP-accredited program with two pharmacy residents. Residents have the opportunity to experience a variety of core and elective rotations including critical care, cardiology/cardiothoracic intensive care, emergency medicine, infectious diseases, internal medicine, pediatrics, pharmacy administration, solid organ transplantation, and transitions of care.

What advice do you have for this year's residents as they embark on their careers:

"Congratulations to all of our residents on their accomplishments this year, especially, during these extraordinary times in our country's history. As you embark on the next chapter in your life, remember that although the plans that you envisioned for yourself may not initially line up with present day, believe it is all part of the journey. Always be open, ready, and willing to take on new opportunities that presents itself, for you never know where it might lead!"

-Sandra Richardson

"As we've seen in the last year, pharmacy is constantly evolving. Keep the mindset of being a lifelong learner and embrace opportunities to step outside of your comfort zone for growth. Your residency graduation is an important milestone, but there are endless possibilities ahead!"

-Kayla Torppey

Ashley Nhan, PharmD

PGY-1 Pharmacy Resident



Hometown: Lumberton, NJ

Pharmacy School: Ernest Mario School of Pharmacy—Rutgers University

Favorite Hobbies: Trying different restaurants, going to the grocery store, watching YouTube, and hanging out with friends

Research Project: Impact of pharmacist-managed direct oral anticoagulant stewardship at a large academic medical center

Future Directions: Pursue a career as a clinical pharmacist (within internal medicine or infectious diseases)

Jonathan Gonzalez, PharmD

PGY-1 Pharmacy Resident



Hometown: Bronx, NY

Pharmacy School: California Northstate University College of Pharmacy

Favorite Hobbies: Playing soccer

Research Project: Impact of pharmacy intervention on antimicrobial de-escalation in Code Sepsis patients

Future Directions: Pursue a position as an ambulatory care clinical pharmacist

Qualitas Specialty Pharmacy



Anita McNeill, RPh, BCSCP

Director of Pharmacy Services, Infusion and Hospital Services



Ron Simbulan, RPh

Director of Pharmacy Services, Mail Order and Specialty Pharmacy



Connie Ho, PharmD, MBA, CSP

PGY-2 Residency Program Director

Clinical Coordinator



Qualitas Pharmacy Services (QPS) is a specialty and home infusion pharmacy located in South Plainfield, NJ.



The facility consists of four unique divisions. The specialty pharmacy provides high-touch, high-cost therapies including oncology, solid organ transplant, hepatitis C, HIV, MS, and other rare disease states. The mail order pharmacy is a closed-door pharmacy providing chronic and specialty medications to RWJBH employees and dependents. The home infusion pharmacy provides intravenous and subcutaneous therapies and ancillary supplies to patients transitioned to home care. Consolidated Pharmacy Services provides batch compounding of sterile products, TPNs, and unit doses of oral medications for RWJBH system hospitals. The pharmacy residency program provides a dynamic environment to mold and develop individuals into future pharmacy administrators and leaders of specialty pharmacy.

Rotations: Transplant, Home Infusion and Specialty Pharmacy. Longitudinal experiences include: Administration, Home Infusion Department Management, Specialty Pharmacy Management, Accreditation and Compliance, Operations Management, Project Management, and Leadership. Electives Include: Systems Integration and Optimization, Corporate Administration and Ambulatory Care.

What advice do you have for this year's residents as they embark on their careers?

"First, you must be the change you want to see."

-Anita McNeill

"As a resident, one can reflect on the words of Albert Einstein, "Only a life lived in service to others is worth living." When we value the needs of others, we enrich our lives. Giving is a powerful pathway to personal growth and lasting happiness."

- Ron Simbulan

"Wherever you are, learn everything you can from those around you. You may find something new of interest or gain experience that benefits you in the future."

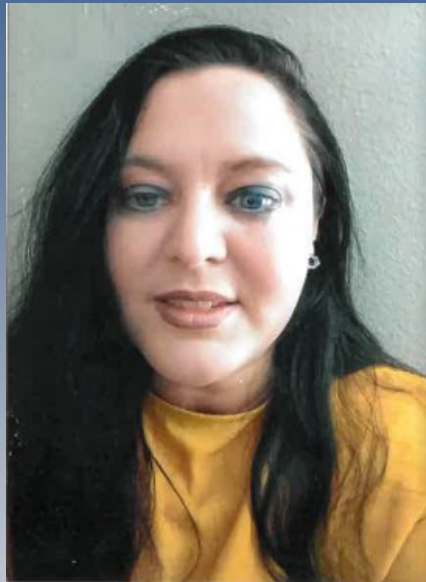
-Connie Ho

Qualitas Specialty Pharmacy



**Stephanie Longshaw,
PharmD, MS**

PGY-2 Specialty Pharmacy
Administrative Resident



Home Town: Mobile and Montgomery, Alabama

Pharmacy School: Pacific University College of Pharmacy

Favorite Hobbies: Hiking, swimming, and classic films

PGY-1 Program: Carlsbad Medical Center

Research Project: Hemophilia pharmacy management development at a specialty and home infusion enterprise of a large multicenter health system

PGY-2 Residency Leadership Forum Presentation: Ethics: Resource Allocation

Future Directions: Pursue a position in pharmacy management

Robert Wood Johnson University Hospital New Brunswick

RWJBarnabas
HEALTH

Jodie Skayhan, PharmD

Director of Pharmacy Services



Sharon Mindel, PharmD, MBA

Assistant Director of Clinical Services
PGY-1 Residency Program Director



Founded in 1884, Robert Wood Johnson University Hospital (RWJUH) New Brunswick, is a 600+ bed academic medical center whose Centers of Excellence include cardiovascular care from minimally invasive heart surgery to transplantation, cancer care, stroke care, neuroscience, orthopedics, and women's and children's care, including The Bristol-Myers Squibb Children's Hospital (BMSCH). As the flagship cancer hospital of Rutgers Cancer Institute of New Jersey and the principal teaching hospital of Rutgers Robert Wood Johnson Medical School in New Brunswick, RWJUH, New Brunswick is an innovative leader in advancing state-of-the-art care. Featuring a Level 1 Trauma Center and the first Pediatric Trauma Center in the state, RWJUH's New Brunswick campus serves as a national resource in its ground-breaking approaches to emergency preparedness.

PGY-1 Required Rotations include:

- Orientation
- Critical Care (MICU focus)
- Drug Information
- Emergency Medicine
- Infectious Disease
- Internal Medicine
- Pediatrics or Solid Organ Transplant
- Longitudinal: Ambulatory Care, Leadership, Research Project, Staffing/Operations

What advice do you have for this year's residents as they embark on their careers?

"Remember you have an entire year under your belt as a practicing pharmacist and have the advantage of gaining an extraordinary amount of knowledge and expertise during your training. You have so much to offer in your new roles and will be a huge asset to your colleagues and patients. We at RWJBH are always here for you - please stay in touch!"

- Sharon Mindel

Ha Young Ryu, PharmD

PGY-1 Pharmacy Resident



Hometown: Queens, New York

Pharmacy school: SUNY University at Buffalo

Favorite hobbies: Brewing coffee, learning new musical instruments

Research project: Utilization of a weight-based cefazolin dosing regimen: a retrospective cohort study

Future Directions: PGY-2 infectious diseases resident in Portland, OR

Shivani Patel, PharmD

PGY-1 Pharmacy Resident



Hometown: Gujarat, India

Pharmacy school: Fairleigh Dickinson University School of Pharmacy and Health Sciences

Favorite hobbies: Dancing, outdoor activities

Research project: Impact of cetirizine versus diphenhydramine on the prevention of chemotherapy-related hypersensitivity reactions and falls

Future Directions: Pursue a position as a clinical pharmacist

**Patrick Bridgeman,
PharmD, BCPS**

PGY-2 Emergency Medicine
Residency Program Director



The PGY-2 residency in emergency medicine pharmacy will focus on the provision of clinical pharmacy services to RWJUH Emergency Department (ED) in New Brunswick, NJ.



RWJUH is the level I trauma center for Central New Jersey seeing approximately 90,000 patients annually. The resident's focus will be on the direct care of ED patients in treatment areas such as emergent care, urgent care, non-urgent care, and pediatrics. The PGY-2 residency in emergency medicine pharmacy is designed to transition PGY-1 residency graduates from generalist practice to specialized practice, which meets the needs of patients in the emergency department setting. Upon completion of training, graduates are equipped to be fully integrated members of the interdisciplinary emergency medicine team, are able to prioritize responsibilities and utilization of resources, and are able to make complex medication recommendations in this fast-paced environment. Training focuses on developing residents' capability to deal with a wide range of diseases and disorders that occurs in patients in the emergency environment.

PGY-2 Required Rotations include:

- Orientation
- Emergency Medicine—General
- Emergency Medicine—Resuscitation
- Emergency Medicine—Pre-hospital Care
- Emergency Medicine— Observation
- Emergency Medicine—Academic
- Medical Intensive Care
- Pediatric Intensive Care
- Toxicology
- Trauma
- Longitudinal: Antimicrobial stewardship, research, and staffing/operations

What advice do you have for this year's residents as they embark on their careers?

"Every person you meet is a potential door to a new opportunity. Develop and maintain meaningful relationships, because you never know how where life will take you."

- Patrick Bridgeman

Patrick Pauls, PharmD, BCPS

PGY-2 Emergency Medicine Pharmacy
Resident



Hometown: Jackson, New Jersey

Pharmacy school: Jefferson College of Pharmacy

Favorite hobbies: Video games, Netflix, snowboarding, volleyball, and tennis

PGY-1 program: Yale New Haven Hospital

Research project: Emergency department culture follow-up program process and impacts in a pediatric population

PGY-2 Residency Leadership Forum Presentation: Facilitating Groups

Future Directions: Clinical pharmacist at RWJ New Brunswick

**Angela Antoniello, PharmD,
BCPS**

PGY-2 Emergency Medicine Pharmacy
Resident



Hometown: Bloomingdale, New Jersey

Pharmacy school: Northeastern University

Favorite hobbies: Eating, drinking coffee, watching sports, crafting, mall walking (i.e., shopping in the good old days)

PGY-1 program: Saint Barnabas Medical Center

Research projects: (1) Optimization of antidote stocking, availability, and administration practices for a large multi-hospital organization (2) Impact of an atrial fibrillation and flutter protocol on anticoagulation prescribing practices in an academic medical center emergency room observation unit

PGY-2 Residency Leadership Forum Presentation: Networking

Future Directions: Pursue a position as an emergency medicine clinical pharmacist

Robert Wood Johnson University Hospital New Brunswick



Emily Aboujaoude, PharmD

Drug Information
Residency Program Director



The specialized Drug Information residency program at RWJUH New Brunswick, NJ offers advanced training in drug



information practice, and is designed to transition PharmD or PGY1 residency graduates from generalist practice to a specialized role as an organizational leader in the development of safe and effective medication-use policies and/or processes, and in the expert analysis of medication-related information.

The Drug Information Service, located at RWJUH New Brunswick, NJ, was founded in 1989 to serve the health care professionals of the State of New Jersey. The Service currently responds to approximately 1,000 requests annually.

The residency program includes a variety of experiences that occur longitudinally throughout the 12-month period of the program. These include but are not limited to:

- Information retrieval, evaluation and application of evidence based medicine principles through processing drug information requests
- Administrative and organizational involvement through policy updates and participation in various committee activities including the Pharmacy and Therapeutics Committee (development and presentation of formulary monographs and class reviews, pharmacoeconomic analyses, and formulary management)
- Didactic and experiential teaching of PharmD students

In addition, three elective rotations are available on a rounding clinical service, industry-based drug information, investigational drug, poison control services, or other sites based on the resident's interest and availability.

What advice do you have for this year's residents as they embark on their careers?

"Success is the result of continuous dedication and willingness to learn. Believe and invest in yourself... the sky is the limit!"

- Emily Aboujaoude

Christie Denton, PharmD

PGY-2 Drug Information

Pharmacy Resident



Hometown: St. Henry, Ohio

Pharmacy school: The University of Cincinnati James L. Winkle College of Pharmacy

Favorite hobbies: Spoiling my dogs and cats, eating yummy food, cycling, and running

PGY-1 program: South County Health

Research project: Evaluation of SAVED and IMPEDE-VTE scoring systems for thrombo-prophylaxis in patients with multiple myeloma

PGY-2 Residency Leadership Forum Presentation: Feedback Delivery

Future Directions: Clinical drug information pharmacist at University of Illinois at Chicago

Dwiti Patel, PharmD

PGY-1 Drug Information

Pharmacy Resident



Hometown: Parsippany, New Jersey

Pharmacy school: Ernest Mario School of Pharmacy at Rutgers University

Favorite hobbies: Hiking, traveling, and reading

Research project: Impact of message framing on coronavirus disease 2019 (COVID-19) recommendations from physicians and pharmacists

Future Directions: Pursue a career as an oncology medical affairs pharmacist

Robert Wood Johnson University Hospital Somerset



Stuart Vigdor, RPh

Director of Pharmacy Services



Nancy Doherty, MS, RPh

Clinical Coordinator, Medication Safety
Officer, PGY-1 Residency
Program Director



Luigi Brunetti, PharmD, MPH, BCPS, BCGP

Residency Program Coordinator



Robert Wood Johnson University Hospital Somerset is a 355-bed community teaching hospital located in Somerville, New Jersey. With a strong commitment to medication improvement, a focus on customer service, and a role in educating future healthcare professionals, the Department of Pharmacy at RWJ Somerset is devoted to delivering operational and clinical excellence, while advancing care and maintaining financial and operational growth. RWJ Somerset has three clinical pharmacy specialists in internal medicine, critical care, and emergency medicine who are affiliated with the Rutgers University Ernest Mario School of Pharmacy.

The PGY-1 Pharmacy Residency Program is an ASHP-accredited program with two pharmacy residents. Residents have the opportunity to rotate through a variety of experiences such as: internal medicine, critical care, emergency medicine, infectious diseases, oncology, geriatrics, transitions of care, and drug information. Longitudinal rotations included experiences in leadership and oncology clinics.

What advice do you have for this year's residents as they embark on their careers?

"This past residency year brought unexpected challenges in the form of a pandemic. You rose to the occasion, showing true professionalism, strength, and dedication. Always remember the impact you made as a valued member of the healthcare team and the compassion you showed to patients."

-Nancy Doherty

"Using your knowledge of pharmacotherapy to help patients is not enough. You need to always consider the patient wishes. Take the time to listen."

-Luigi Brunetti

Savanna SanFilippo,
PharmD

PGY-1 Pharmacy Resident



Hometown: Hamilton, New Jersey

Pharmacy school: Ernest Mario School of Pharmacy at Rutgers University

Favorite hobbies: Baking, going on outdoor adventures, gardening, and reading

Research projects: Classification and assessment of medication risk in the elderly (top five research platform presentation finalist at NJHSP)

Future Directions: Tabula Rasa Healthcare Pharmaceutical Fellowship with Rutgers University

Joint Research Project: (1) Effect of time to remdesivir administration on patient outcomes (2) Safety and efficacy of bamlanivimab and casirivimab with imdevimab in SARS-CoV-2 (3) Bamlanivimab administration timing does not impact therapeutic outcomes

Hometown: Highland Mills, New York

Pharmacy school: SUNY University at Buffalo

Favorite hobbies: Hiking, attending concerts, and checking out new restaurants

Research projects: The impact of a pharmacist-driven post-ICU recovery service on medication management in an academic community hospital

Future Directions: PGY-2 critical care resident at Mount Sinai/Touro College of Pharmacy

Brynna Crovetto, PharmD

PGY-1 Pharmacy Resident



Saint Barnabas Medical Center



Heather DeSanto, PharmD, BCSCP

Director of Pharmacy Services



Alison Brophy, PharmD, BCPS, BCCCP

Assistant Director of Pharmacy Clinical Services,
PGY-1 Pharmacy Residency Program Director



Jess Bente, PharmD, BCPS, BCGP

Transitions of Care Clinical Pharmacist, PGY-2
Geriatric Pharmacy Residency Program Director



Saint Barnabas Medical Center is a 538-bed tertiary care, community hospital in Livingston, NJ that has long been recognized as a leader in providing the highest level of patient care. Saint Barnabas has more than 100 medical and surgical specialty and subspecialty services including nationally recognized Renal and Pancreas Transplant Division, Heart Centers, Stroke Center, and Burn Center.

The PGY-1 Residency is an ASHP-accredited program since 1993, currently supporting four pharmacy residents. Required PGY-1 Rotations include ambulatory care, transplant clinic or transitions of care, ICU, CCU or emergency medicine, infectious disease or renal transplant, internal medicine, pediatrics or geriatrics. Elective rotations include burn ICU, drug information, OR pharmacy, and leadership. The PGY-2 Geriatric Pharmacy Residency is designed to develop specialized clinicians to serve older adults in the acute and ambulatory settings.

What advice do you have for this year's residents as they embark on their careers?

"Use every opportunity to learn, especially from other people and failure!"

- Alison Brophy

"Keep an open mind. It is easy to get caught up in finding a job that is exactly how you imagined, but being hyper-focused can cause you to miss amazing opportunities that may be right in front of you."

-Jess Bente

Saint Barnabas Medical Center



Keely Morris, PharmD

PGY-1 Pharmacy Resident



Hometown: Pontiac, MI

Pharmacy school: University of Cincinnati

Favorite hobbies: Running, knitting, and cheering on the Detroit Red Wings

Research projects: (1) Impact of a long-acting glycopeptide algorithm for the treatment of skin and soft tissue infections on 30-day emergency department revisits (2) Retrospective review of the safety and efficacy of sugammadex versus neostigmine for neuromuscular block reversal in patients with renal dysfunction

Future Directions: Pursue a position as a clinical pharmacist

Timothy Amin, PharmD

PGY-1 Pharmacy Resident



Hometown: Bayonne, New Jersey

Pharmacy school: Ernest Mario School of Pharmacy at Rutgers University

Favorite hobbies: Board games, hiking, singing at karaoke, and eating at classic NJ diners

Research projects: (1) Redeploying pharmacy workforce during COVID-19 (2) Impact of pharmacist-initiated protocol on *Pneumocystis jirovecii* pneumonia prophylaxis practices in renal transplant patients

Future Directions: PGY-2 ambulatory care pharmacy resident at the Brooklyn Hospital Center & Long Island University

Ahmed Nagy, PharmD

PGY-1 Pharmacy Resident



Hometown: Elizabeth, NJ

Pharmacy school: Ernest Mario School of Pharmacy at Rutgers University

Favorite hobbies: Playing soccer, playing video games, spending time with friends, and watching science fiction movies

Research projects: (1) Pharmacist-driven dosing service for vancomycin using Bayesian methods at a community teaching hospital (2) Evaluation of insulin requirements for COVID-2019 positive patients presenting with diabetic ketoacidosis at a community teaching hospital

Future Directions: PGY-2 critical care pharmacy resident at Cooper University Hospital & Philadelphia College of Pharmacy

Emily Seidl, PharmD

PGY-1 Pharmacy Resident



Hometown: Clinton Park, NY

Pharmacy school: Albany College of Pharmacy and Health Sciences

Favorite hobbies: Hiking, shopping, going to the beach, and hanging out with friends, family, and boyfriend

Research projects: (1) Evaluation of pediatric patients medication adherence and satisfaction from medication flavoring (2) Evaluation of cholesterol guideline adherence in renal transplant patients

Future Directions: Pursue a position as a clinical pharmacist

Christine Arquero, PharmD

PGY-2 Geriatric

Pharmacy Resident



Hometown: Queens, NY

Pharmacy School: St. John's University

Favorite Hobbies: Cooking, traveling, trying new things and being creative

PGY-1 Program: Brooklyn Hospital Center

Research Project: Safety and appropriateness of antimicrobial usage in elderly patients with asymptomatic bacteriuria

PGY-2 Residency Leadership Forum Presentation: Managing Up

Future Directions: Pursue a position as a geriatric clinical pharmacist

Pharmacy Residency Class of 2020-2021 Celebrations

Our residents, preceptors, and other program members celebrated their accomplishments, milestones, and each other throughout the residency year. While the Covid-19 pandemic continued, they found creative and safe ways to bond. Celebrations like these are important to developing resiliency, strong relationships, and lasting memories.



American Society of Health-System Pharmacists Virtual Pharmacy Residency Recruitment

This year was unlike any other for RWJBarnabas Health in many ways. With this year's virtual ASHP Midyear conference, the system was pushed to utilize more creative methods for residency recruitment. Social media was a powerful tool that allowed us to reach hundreds of potential candidates. One of this year's new recruitment initiatives was the Instagram takeover! The residents from each program in the system took turns posting Instagram stories on the RWJBH Pharmacy Instagram account and it was a huge success.



RWJBarnabas Health Residency Leadership Forum

The American Society of Health-Systems Pharmacists (ASHP) has created residency objectives that guide program directors and prepare pharmacy residents to become well-rounded clinical practitioners. In response to the newly revised pharmacy residency standards in 2014, the Residency Leadership Forum was founded by Jennifer Sternbach, Jessica Hill, and Sheetal Patel. The program is designed to develop residents in competency area R3, which focuses on leadership and management skills. The Leadership Forum consists of six off-site sessions throughout the year which integrate various topics including emotional intelligence, conflict management, and team building. In addition, it provides an opportunity to learn from and network with other residents within the health system. For the 2020-2021 fiscal year, residency leadership forum coordinators Jennifer Sternbach, Jessica Hill, and Joseph Cavanaugh have expanded the forum to include a PGY-2/PGY-1 peer mentor program, PGY-2 pharmacy resident leadership presentations and guest speakers Dr. Jessica Israel, Dr. Fred Foley, and Tom Moore. The PGY-2 residents presentation topics include: research & statistics, interview preparation, managing conflict, resource allocation, facilitating group conversations, networking, feedback delivery and managing up. The residency leadership forum was able to forge on forward with both socially distanced and virtual meetings to ensure these milestones were met throughout the COVID-19 pandemic.



Teaching and Learning Certificate

Rutgers, The State University of New Jersey

The Teaching and Learning Certificate program is composed of seminars and workshops designed to provide residents and fellows with the skills necessary to begin their careers as pharmacy leaders and educators. Residents and fellows across the state had the opportunity to participate in this program, meeting once per month at the Ernest Mario School of Pharmacy. Rutgers faculty organized lectures on topics including learning and teaching styles, feedback, academic integrity, civility, professionalism, publications, and more. Residents and fellows were taught how to effectively create syllabi, learning objectives, and exam questions. With the global pandemic on the rise, the program transitioned strictly to virtual sessions for the remaining few lectures. At the end of the year, program participants submitted a teaching portfolio, highlighting their teaching experiences throughout the year. Throughout the program, residents and fellows are preparing to precept both Intermediate Pharmacy Practice Experience (IPPE) and Advanced Pharmacy Practice Experience (APPE) students. Pharmacy residents were able to participate and virtually collaborate with local peers despite the current COVID-19 pandemic.



COVID-19 Vaccination Response

The COVID-19 pandemic has brought many unique opportunities and challenges for healthcare providers. Since early December, three vaccines with efficacy against SARS-CoV-2 received *emergency use authorization* for widespread public administration. Pharmacist and pharmacy technicians have been instrumental in the coordination, storage, reconstitution, delivery, and administration of these life-saving medications. This widespread vaccination effort has further demonstrated the role of a pharmacist and how essential our profession is in order to administer medications in a safe and effective manner. Outside of these vaccinations efforts, pharmacists have also served as public educators to combat vaccination hesitancy and provide accurate medical information on the risks and benefits of these novel therapies. This vaccination response has further afforded pharmacy residents the opportunity to assist our healthcare teams and protect our local communities. Since December 2020, the RWJBarnabas health system has administered over 430,000 doses to the residents of New Jersey.



Six Principles

Advocacy

Finance

Community

**Quality &
Safety**

**Research &
Publication**

Education

Applying the Six Principles During Residency

Advocacy

“Andre Gide once said, “You cannot discover new oceans unless you have the courage to lose sight of the shore.” During this unique year, our residency class has developed the ability to push beyond our comfort zones and take on challenges that foster personal and professional growth. We have learned to move gracefully within ever-changing situations, while continuing to encourage our own development. As we move forward, we dedicate ourselves to advocate for our continual improvement, no matter how uncertain that first step may feel.”

- Lakhini Vyas

“Advocacy is one of the cornerstones of pharmacy practice. We cannot advocate for our patients unless we advocate for our profession. Looking to the future, we should all be mindful of areas of improvement and push the profession of pharmacy to provide the best care possible.”

-Keely Morris

“As pharmacists, it is our duty to advocate and promote our skills and education as healthcare providers. It is this grassroots movement for change that will drive the profession forward and expand our scope of practice. Always remember that working together with the pharmacists is the way we can create practice change. “

- Christine Arquero

“Good things come in threes and so does advocacy. First, we should advocate for our patients to ensure they receive the most safe and effective therapy available. Second, we should advocate for our profession to allow our presence to grow on multidisciplinary teams and to expand the different roles that we can play. Third, we should advocate for ourselves by making sure we constantly expand our knowledge/skills and to have new experiences to allow us to be better advocates for our patients and our profession.”

-Ahmed Nagy

Finance

“Financial stewardship is a fundamental skill as a pharmacist, which can be enacted on many levels. Navigating patients through financial reimbursements, medical and private insurance benefits, copay assistance, and foundation funds can be a daunting task. Prior authorizations and complex appeals resolved for specialty patients is a reward within itself. Inventory management, 340b purchasing, and P&T formulary committees are strategies employed by pharmacists to ensure financial solvency and access for patients.”

-Stephanie Longshaw

Throughout this residency year, I learned that there is a huge opportunity for pharmacists to have a significant impact on reducing healthcare costs. We have the expertise to detect, resolve, and prevent medication errors and adverse events. With the rising cost in healthcare, pharmacists are the key components in providing individualized care and ensuring the cost-effectiveness of medications. With the COVID-19 pandemic, addressing the economic aspect of social determinants of health drives improved clinical outcomes. From identifying co-pay costs with insurance companies to filling out patient assistance program applications, any support can aid in access to care and promote medication adherence

-Lalitha Sukumar

Community

"I, among many others, have always been told that pharmacy is a small world; I always thought this to be a warning. I have since learned that this is one of the best parts of being a pharmacist. We mentor, share ideas, and support each other freely and generously. We work with inter-professional healthcare teams, patients and their families, and each other at so many different levels. Being part of engaging communities allows us to foster the continuous growth of everyone and everything around us. This sense of belonging gives me the courage to be vulnerable, empowered, and meaningfully connected. I cannot stress enough how valuable it is to work in a profession that builds relationships and support systems that are central to human experience."

- Savanna SanFilippo

"As Coretta Scott King once said, "The greatness of a community is most accurately measured by the compassionate actions of its members." This message has resonated with me all year as a pharmacy resident in 2020. I have witnessed the power of a compassionate, collaborative, resilient healthcare community, united at every level, to provide the very best care possible in the face of a global pandemic, while continuing to address every day patient needs. I have grown as a pharmacist in my role, working with healthcare providers and hospital staff, with the same goal to help our patients. As a community, we continue to support one another, to listen to one another, and to lead one another. I am grateful for all that I have learned this year from those around me — my co-residents, preceptors, mentors, and other healthcare workers. They challenged me, encouraged me, and empowered me to reach my fullest potential. I am so proud of our residency class and I look forward to continuing to grow in this incredible pharmacy community throughout the rest of my career."

-Jennifer Weiss

"American writer Margaret J. Wheatley said that "There is no power for change greater than a community discovering what it cares about." What do I care about? I care about the health, safety, and well-being of my friends, family, and patients. I care about equipping my patients with the knowledge and resources they need to be their own best advocates. I care about the advancement of my profession to unprecedented heights. None of this is possible without a strong sense of intra- and inter-professional community. I am so proud and blessed to be a part of a community that doesn't back down in the face of historic pandemics. The knowledge and skills I have gained thus far as a continuous learner in this community will allow me to do more than I could ever imagine. I implore my colleagues to never understate the importance of community for the betterment of patients and society. I am certain that the RWJBH Pharmacy Residency Class of 2021 is ready to change the world, one "care" at a time!"

- Timothy Amin

"My residency experience has taught me to always advocate for our patients and provide them with pharmacotherapy that is both safe and effective. Our role as pharmacists not only provides us with the rewarding experience to collaborate and share knowledge with different health care disciplines to optimize patient care but also to share knowledge with our patients through patient education."

-Michelle Mei

"Reflecting upon the concept of community as a resident, the importance of being earnest cannot be understated. With forthright intentions and transparency of actions, trust is gained from those whom you lead. Clear vision and purpose is the foothold from which you stand, guiding others on monumental efforts."

-Stephanie Longshaw

Quality & Patient Safety

“A quote by Eleanor Roosevelt that always resonated with me states, “You must do the thing you think you cannot do.” I always thought that this meant to continuously challenge yourself for new opportunities. However, residency has shown me the biggest “thing” as pharmacists we must do is speak up for patient safety, no matter how small the concern may be. We must remember to be advocates for the well being of our patients.”

-Mary Ibrahim

“With all the advances in technology in patient care, it is imperative that pharmacists not only take advantage of this for their own practice, but for the benefit of the patient, as well. Technology like continuous glucose monitoring can help us manage our patients better and allow patients to be more aware of their own health status. These advances in technology has also helped greatly during the COVID-19 pandemic. Following up with patients via telehealth ensured that patients still received proper medical care, while also staying safe. This also allows healthcare to be accessible to a larger population, which leads to better health outcomes for our patients.”

-Emily Seidl

“Do not be afraid to speak up on behalf of our patients, because we do serve them first and foremost. A wise mentor told me, “If you needed to summarize our number one priority as pharmacists in the emergency department in one word, that word would be “safety.” This same thought rings true in every area of pharmacy; we are one of the last lines of defense to protect our patients. This can be done through simple clarification of orders, or changing policies and procedures at a health system level. Principle II of the Code of Ethics for Pharmacists states, “A pharmacist promotes the good of every patient in a caring, compassionate, and confidential manner. A pharmacist places concern for the well-being of the patient at the center of professional practice...”, and I believe this should be at the core of everything we do.”

-Patrick Pauls

“Technological advancements in healthcare have led to improvements in patient health outcomes. Devices have been developed to help patients manage their disease states, communicate with healthcare providers, and administer medications with ease. One thing technology cannot replace, is the rapport we pharmacists build with our patients on a daily basis. Elbert Hubbard said, “One machine can do the work of fifty ordinary men. No machine can do the work of one extraordinary man.” While utilizing technology makes patient care more feasible, we must not forget to go above and beyond for our patients. Technology makes it easier for a patient to manage their disease but it is our duty to educate and empower patients to take control of their life. “

-Jonathan Gonzalez

Research & Publication

“Being a member of RWJBH affords pharmacy residents the opportunity to develop our research capabilities and to take advantage of all the structured resources and informatics solutions within the network. The ability to benefit from this has influenced my growth and development and is something that I will carry with me throughout my professional career.”

-Michael Mandarino

“Robert Collier said, “Success is the sum of small efforts, repeated day in and day out”. Each project is an effort to impact the institution in a positive way, and the institutional success comes from the sum of all the research and educational efforts individuals make. Even after graduation, we will continue to push forward and diligently work to enhance the profession of pharmacy together.”

- Sonia Kim

Education

“Education is an essential pillar of the pharmacy profession and that was definitely true this year. As Nelson Mandela stated, “Education is the most powerful weapon which you can use to change the world.” With misinformation about COVID-19 and the vaccines flooding mainstream media, it is easy for the general public to believe whatever they see. Pharmacists have an important role in providing education and dispelling myths to make real strides in beating this virus.”

-Ashley Nhan

“Teaching and learning are active processes that take place through engaging with peers, preceptors, and other professionals. Both were an essential part of our residency program and challenged us to step outside of our comfort zones. The experiences obtained will continue to drive our professional and personal development as we move forward with our careers.”

- Dwiti Patel

“Throughout this year, being fortunate enough to assist with preceptorship of pharmacy students and participate in the teaching and learning program has provided me with the opportunity to develop my skills as not just a pharmacist, but an educator. With the addition of these skills, I was able to further my own knowledge and education by supplementing theirs. These are all skills and experiences that I hope to carry with me throughout my pharmacy career.”

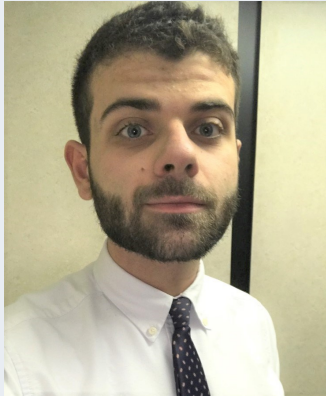
-Brynna Crovetto

“Finding your own answers is one of the cornerstones of learning new concepts. When you become a self-motivated learner, you can constantly expand your knowledge by sharing it and educating others. As a pharmacy resident, I found that educating student pharmacists and other healthcare professionals is how I most efficiently retain knowledge.”

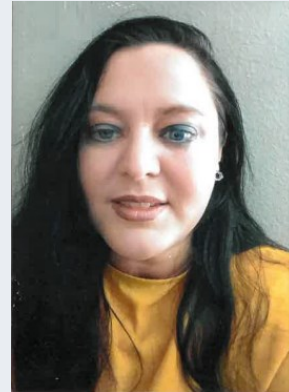
-Sandra Eid

Residency Annual Report Committee

Committee Chairs:



Michael Mandarino



Stephanie Longshaw

Committee Members:



Brynna Crovetto



Savanna SanFilippo



Ashley Nhan



Lakhini Vyas



Sonia Kim